

WAAS CH <b>86217</b> <b>W01A</b>	APP CRS <b>010°</b>	Rwy ldg TDZE Apt Elev	<b>6500</b> <b>1101</b> <b>1109</b>
----------------------------------------	------------------------	-----------------------------	-------------------------------------------

# RNAV (GPS) RWY 1

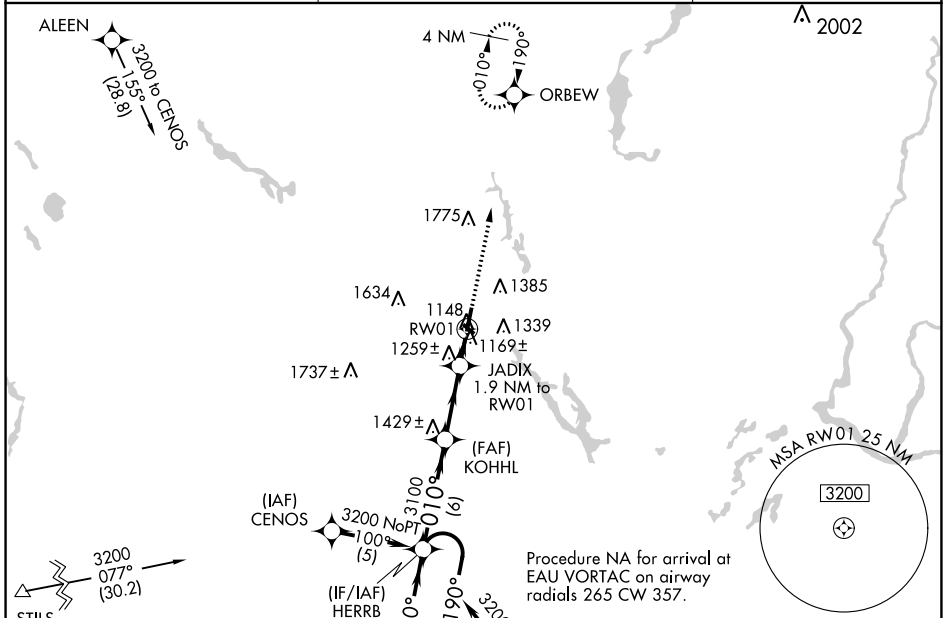
RICE LAKE RGNL/CARL'S FLD (RPD)

**⚠** If local altimeter setting not received, use Chippewa Valley Rgnl altimeter setting and increase all DAs/MDAs 120 feet. DME/DME RNP-0.3 NA. Baro-VNAV NA below -17°C (3°F). Baro VNAV and VDP NA when using Chippewa Valley Rgnl altimeter setting. For inoperative MALSR, increase LPV visibility to 1, and LNAV Cat D visibility to 1¼. Circling Rwy 13, 31 NA at night.



**MISSED APPROACH:**  
Climb to 3200 direct ORBEW and hold.

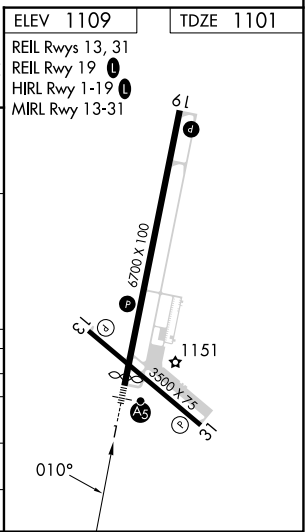
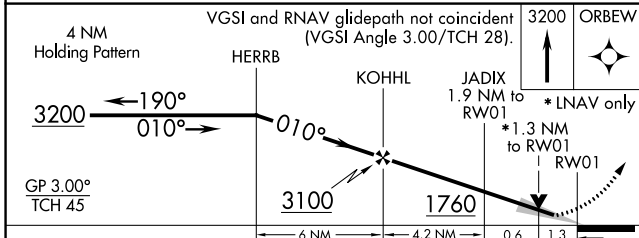
AWOS-3 <b>120.525</b>	MINNEAPOLIS CENTER <b>125.3 335.6</b>	UNICOM <b>122.7 (CTAF)</b>
--------------------------	------------------------------------------	-------------------------------



EC-3, 03 OCT 2024 to 31 OCT 2024

EC-3, 03 OCT 2024 to 31 OCT 2024

ELEV 1109	TDZE 1101
REIL Rwy 13, 31	REIL Rwy 19
HIRL Rwy 1-19	MIRL Rwy 13-31



CATEGORY	A	B	C	D
LPV DA		1390-½	289 (300-½)	
LNAV/ VNAV		1440-¾	339 (400-¾)	
LNAV MDA	1520-½	419 (500-½)	1520-¾ 419 (500-¾)	1520-1 419 (500-1)
<b>C</b> CIRCLING	1600-1¼ 493 (500-1¼)	1740-1¼ 631 (700-1¼)	1740-1¾ 631 (700-1¾)	1940-2¾ 831 (900-2¾)