

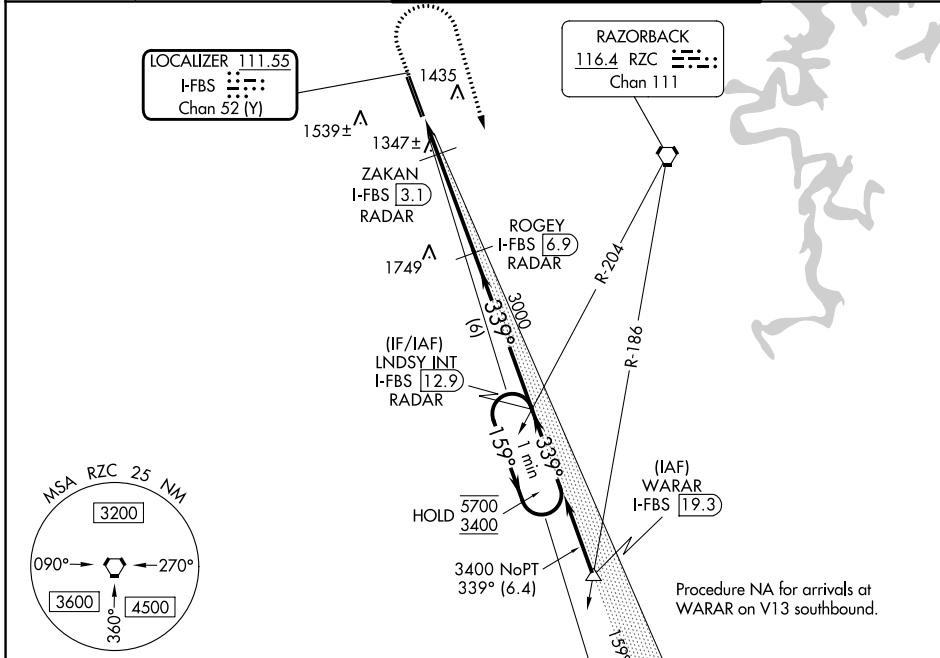
LOC/DME I-FBS <b>111.55</b> Chan <b>52(Y)</b>	APP CRS <b>339°</b>	Rwy Idg <b>8800</b> TDZE <b>1273</b> Apt Elev <b>1288</b>
---	------------------------	---

# ILS or LOC RWY 34R

NORTHWEST ARKANSAS NTL (X.N.A)

DME or RADAR required for LOC only.	MALSR	MISSED APPROACH: Climb to 1800 then climbing right turn to 3400 on heading 163° and RZC VORTAC R-204 to LNSDY INT/I-FBS 12.9 DME/RADAR and hold.
<p>▼ For inop ALS, increase S-ILS 34R Cat E visibility to RVR 4000 and S-LOC 34R Cat E visibility to RVR 5000.</p> <p>▲ *RVR 1800 authorized with use of FD or AP or HUD to DA.</p>		

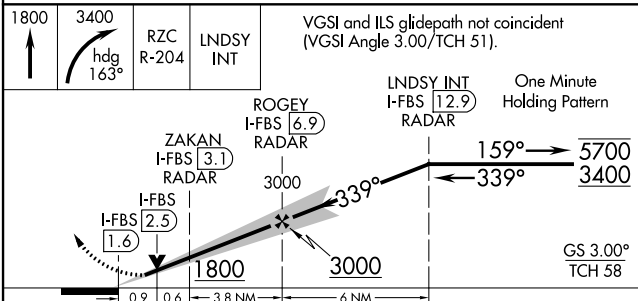
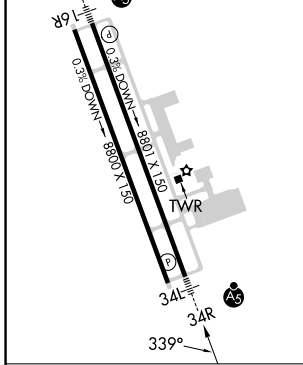
ATIS <b>119.425</b>	RAZORBACK APP CON* <b>121.0 244.575</b>	NORTHWEST ARKANSAS NTL TOWER * <b>127.1 (CTAF) 0</b>	GND CON <b>121.9</b>
------------------------	--	---	-------------------------



SC-1, 03 OCT 2024 to 31 OCT 2024

SC-1, 03 OCT 2024 to 31 OCT 2024

ELEV <b>1288</b>	<b>D</b> TDZE <b>1273</b>
HIRL Rwy 16L-34R	
MIRL Rwy 16R-34L	



CATEGORY	A	B	C	D	E
S-ILS 34R*	1473/24 200 (200-1/2)				
S-LOC 34R	1600/24	327 (400-1/2)	1600/26	327 (400-1/2)	
CIRCLING	1740-1 452 (500-1)	1760-1 472 (500-1)	2040-2 1/4 752 (800-2 1/4)	2080-2 1/2 792 (800-2 1/2)	2080-2 3/4 792 (800-2 3/4)