

WAAS CH 97346 W34A	APP CRS 339°	Rwy Idg TDZE 1273 Apt Elev 1288	8800
--	------------------------	---	-------------

RNAV (GPS) RWY 34R

NORTHWEST ARKANSAS NTL (X.N.A)

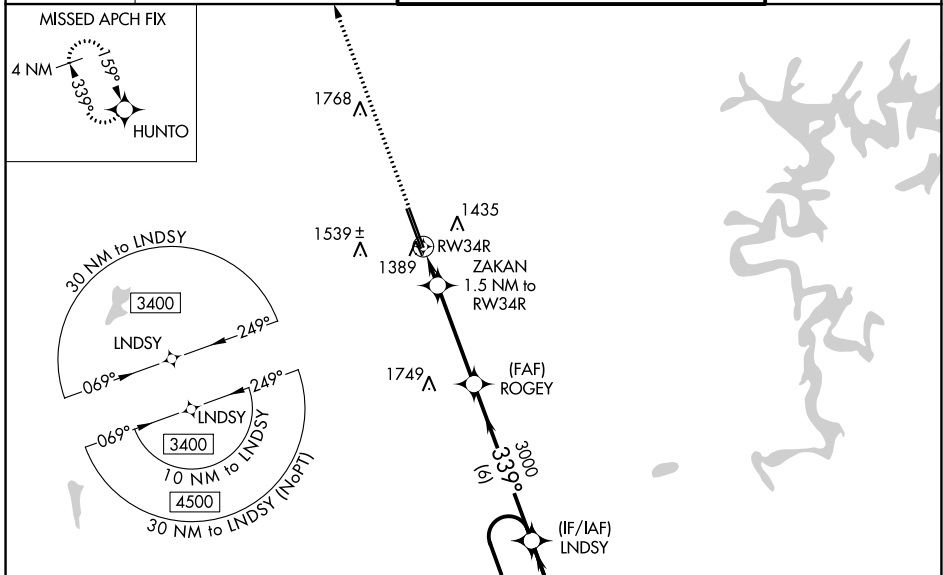
RNP APCH - GPS.

▼ For uncompensated Baro-VNAV systems, LNAV/VNAV NA below -1.5°C or above 54°C. For inop ALS, increase LPV Cat E visibility to RVR 4000, LNAV/VNAV all Cats visibility to RVR 4500 and LNAV Cats C, D, and E visibility to RVR 5500.
* RVR 1800 authorized with use of FD or AP or HUD to DA.

▲ MALSR

MISSED APPROACH: Climb to 3400 direct HUNTO and hold

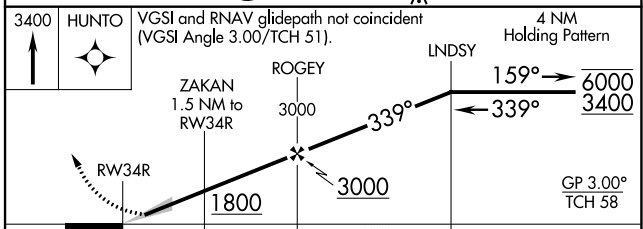
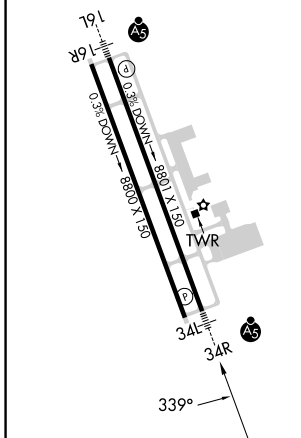
ATIS 119.425	RAZORBACK APP CON * 121.0 244.575	NORTHWEST ARKANSAS NTL TOWER * 127.1 (CTAF) 0	GND CON 121.9
------------------------	---	---	-------------------------



SC-1, 03 OCT 2024 to 31 OCT 2024

SC-1, 03 OCT 2024 to 31 OCT 2024

ELEV 1288	D TDZE 1273
HIRL Rwy 16L-34R 1	
MIRL Rwy 16R-34L	



CATEGORY	A	B	C	D	E
LPV DA *		1473/24		200 (200-½)	
LNAV/VNAV DA		1550/24		277 (300-½)	
LNAV MDA	1640/24	367 (400-½)	1640/35		367 (400-¾)
CIRCLING	1740-1 452 (500-1)	1760-1 472 (500-1)	2040-2¼ 752 (800-2¼)	2080-2½ 792 (800-2½)	2080-2¾ 792 (800-2¾)