

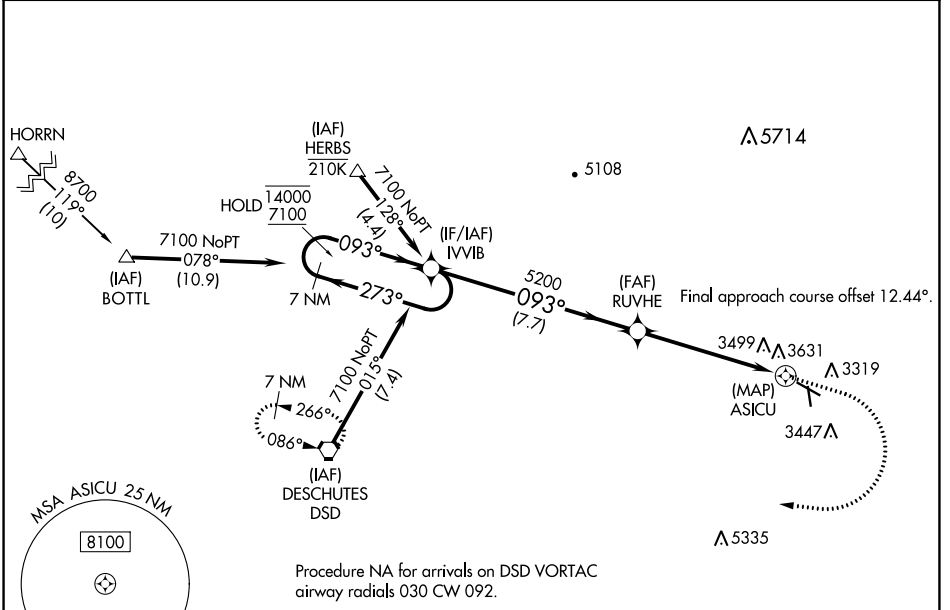
WAAS CH <b>60936</b> <b>W11A</b>	APP CRS <b>093°</b>	Rwy Idg TDZE Apt Elev	<b>5405</b> <b>3246</b> <b>3251</b>
--	------------------------	-----------------------------	---

# RNAV (GPS) RWY 11

PRINEVILLE (S39)

RNP APCH-GPS.	MISSED APPROACH: Climb to 5100 then climbing right turn to 7100 direct DSD VORTAC and hold.
<p>⚠ Circling NA for Cat D south of Rwy 11-29.</p> <p>⚠ Rwy 11 helicopter visibility reduction below 3/4 SM NA.</p> <p>⚠ Circling Rwy 15 NA at night.</p>	*Missed approach requires minimum climb of 215 feet per NM to 5400.

AWOS-3PT <b>118.325</b>	SEATTLE CENTER <b>126.15 269.475</b>	UNICOM <b>122.7 (CTAF) 0</b>
----------------------------	---	---------------------------------



NW-1, 03 OCT 2024 to 31 OCT 2024

NW-1, 03 OCT 2024 to 31 OCT 2024

	ELEV 3251	TDZE 3246		
CATEGORY	A	B	C	D
LP MDA*	3660-1	414 (500-1)	3660-1 1/8	414 (500-1 1/8)
LP MDA	3760-1	514 (600-1)	3760-1 3/8	514 (600-1 3/8)
LNAV MDA	3900-1	654 (700-1)	3900-1 7/8	654 (700-1 7/8)
CIRCLING	3960-1 709 (800-1)	4040-1 789 (800-1)	4040-2 1/4 789 (800-2 1/4)	4040-2 1/2 789 (800-2 1/2)
	<p>MIRL Rwy 11-29 0</p> <p>LIRL Rwy 15-33 0</p>			