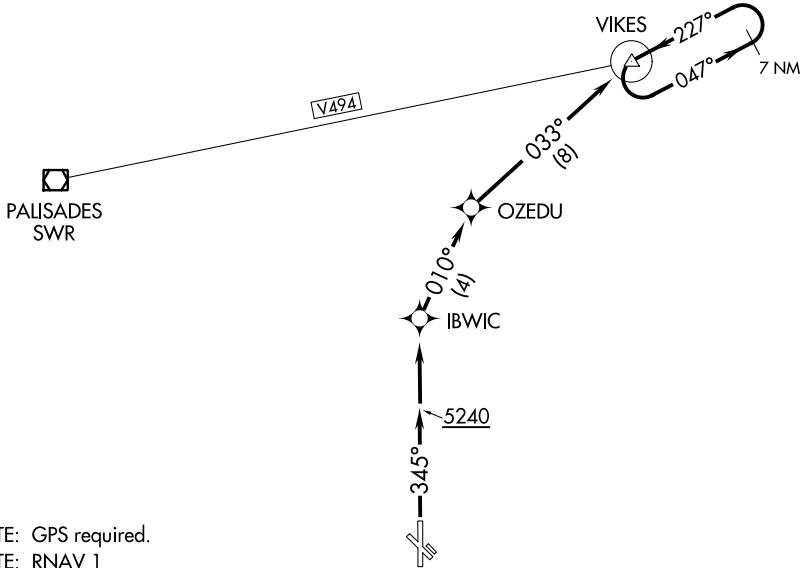


(MINDN2.VIKES) 23222

MINDEN TWO DEPARTURE (OBSTACLE) (RNAV)

MINDEN-TAHOE (MEV)
AL-9430 (FAA) MINDEN, NEVADA

RENO TOWER
118.7 257.8
NORCAL DEP CON
119.2 279.55



NOTE: GPS required.

NOTE: RNAV 1

TAKEOFF MINIMUMS

Rwys 16, 12, 30: NA - obstacles.

Rwy 34: Standard with a minimum climb of 413' per NM to 7800.

TAKEOFF OBSTACLE NOTES

Rwy 34: Fence 235' from DER, 302' right of centerline, 7' AGL/4714' MSL.

NOTE: Chart not to scale.

DEPARTURE ROUTE DESCRIPTION

TAKEOFF RUNWAY 34: Climb heading 345° to 5240 then direct IBWIC, then on track 010° to OZEDU, then on track 033° to VIKES, then climb in VIKES holding pattern (hold NE, left turn, 227° inbound) to cross VIKES at or above MEA/MCA for assigned route of flight.

MINDEN TWO DEPARTURE (OBSTACLE) (RNAV)
(MINDN2.VIKES) 15DEC11

MINDEN, NEVADA
MINDEN-TAHOE (MEV)

SW-4, 03 OCT 2024 to 31 OCT 2024

SW-4, 03 OCT 2024 to 31 OCT 2024