

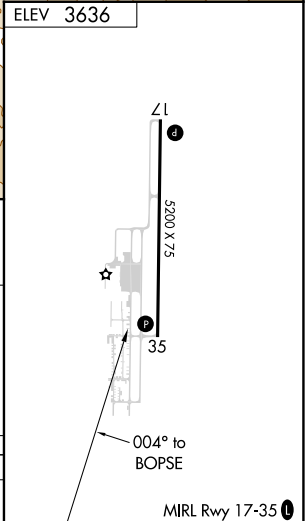
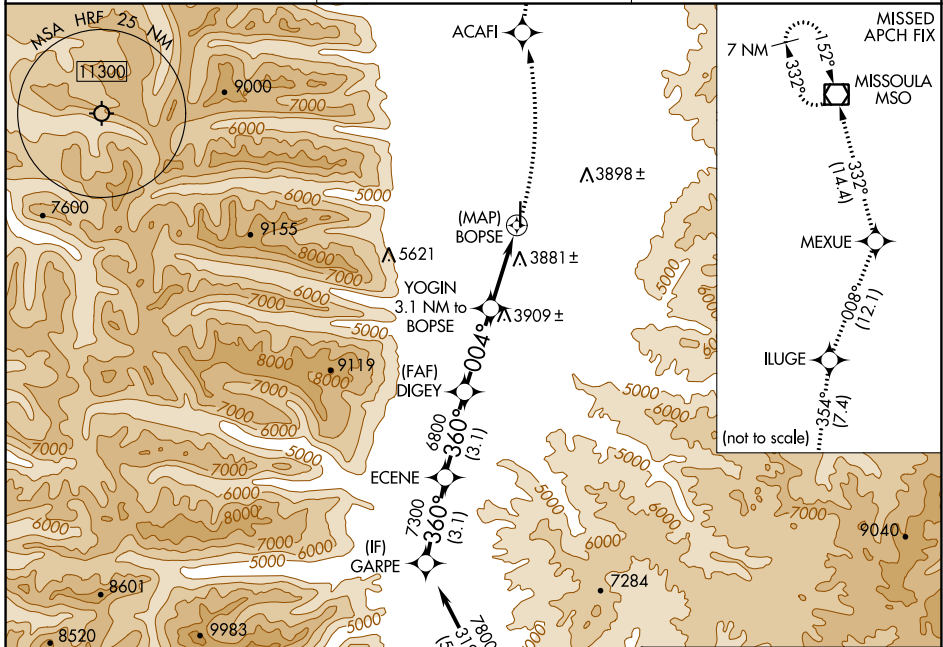
APP CRS	Rwy Idg	N/A
004°	TDZE	N/A
	Apt Elev	3636

RNAV (GPS)-A

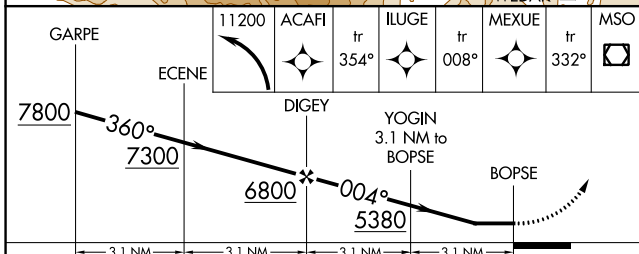
RAVALLI COUNTY (HRF)

RNP APCH-GPS.	MISSED APPROACH: Climbing left turn to 11200 direct ACAFI and on track 354° to ILUGE and track 008° to MEXUE and track 332° to MISSOULA VOR/DME and hold.
Circling to Rwy 35 NA at night. Rwy 35 helicopter visibility reduction below 1 SM NA.	

AWOS-3P 119.825	SALT LAKE CENTER 132.4 338.3	UNICOM 122.8 (CTAF)
---------------------------	--	-------------------------------



Procedure NA for arrivals at WEDAK on V231 southbound.					
(IF) GARPE	(IFAF) DIGEY	(MAP) BOPSE	(IF) ECENE	(IF) OBLIE	(IAF) WEDAK
7300	6800	3881 ±	7300	7600	9000
(3.1)	(3.1)	(3.1)	(3.1)	(3.1)	(3.1)



CATEGORY	A	B	C	D
CIRCLING	4240-1 604 (700-1)	4260-1 624 (700-1)	NA	

NW-1, 03 OCT 2024 to 31 OCT 2024

NW-1, 03 OCT 2024 to 31 OCT 2024