

WAAS CH 40131 W05A	APP CRS 050°	Rwy Idg TDZE 584 Apt Elev 584	4099
--	------------------------	---	-------------

RNAV (GPS) RWY 5

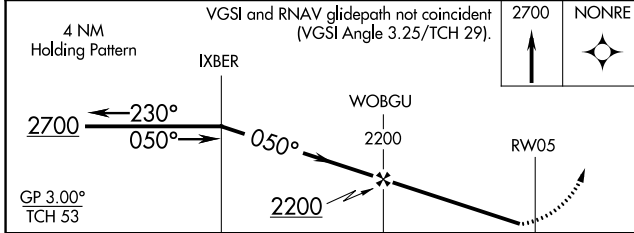
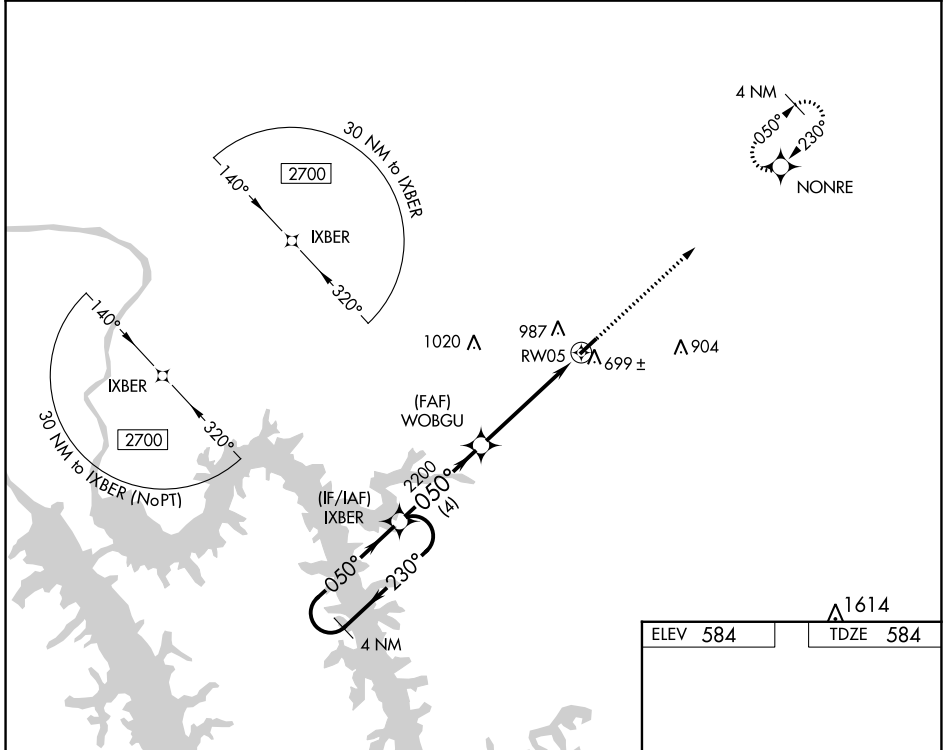
PRINCETON-CALDWELL COUNTY (2M \emptyset)

Baro-VNAV NA. Use Campbell AAF (Fort Campbell) altimeter setting; when not received, use Madisonville Rgnl altimeter setting and increase all DA 6 feet and all MDA 20 feet.
NA Increase LPV all Cats visibility 1/8 mile. DME/DME RNP-0.3 NA. Helicopter visibility reduction below 3/4 SM NA.

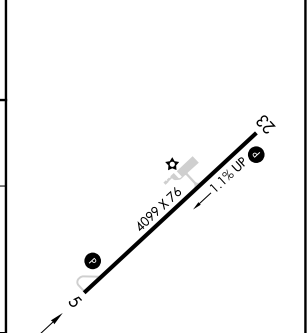
MISSED APPROACH:
Climb to 2700 direct NONRE and hold.

CAMPBELL APP CON
118.1 269.525

UNICOM
122.8 (CTAF) \emptyset



ELEV 584	TDZE 584
----------	----------



CATEGORY	A	B	C	D
LPV DA	909-1	325 (400-1)		NA
LNNAV/VNAV DA	936-1 1/8	352 (400-1 1/8)		NA
LNNAV MDA	1040-1	456 (500-1)		NA
CIRCLING	1420-1 1/4	836 (900-1 1/4)		NA

MIRL Rwy 5-23 \emptyset

REIL Rwy 5 and 23 \emptyset

SE-1, 03 OCT 2024 to 31 OCT 2024

SE-1, 03 OCT 2024 to 31 OCT 2024