

# RNAV (GPS) RWY 2

NONDALTON (5NN) (PANO)

APP CRS <b>020°</b>	Rwy Idg <b>2800</b>
	TDZE <b>314</b>
	Apt Elev <b>314</b>

RNP APCH - GPS.

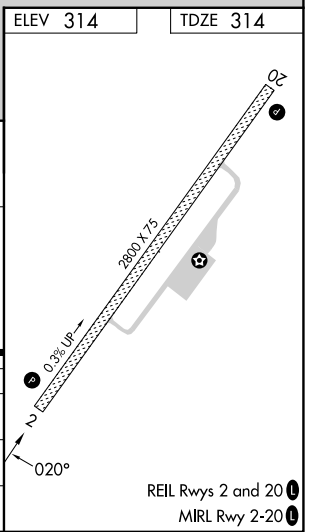
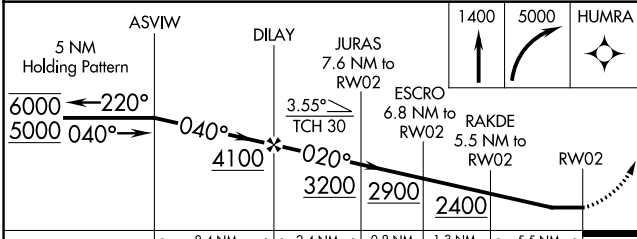
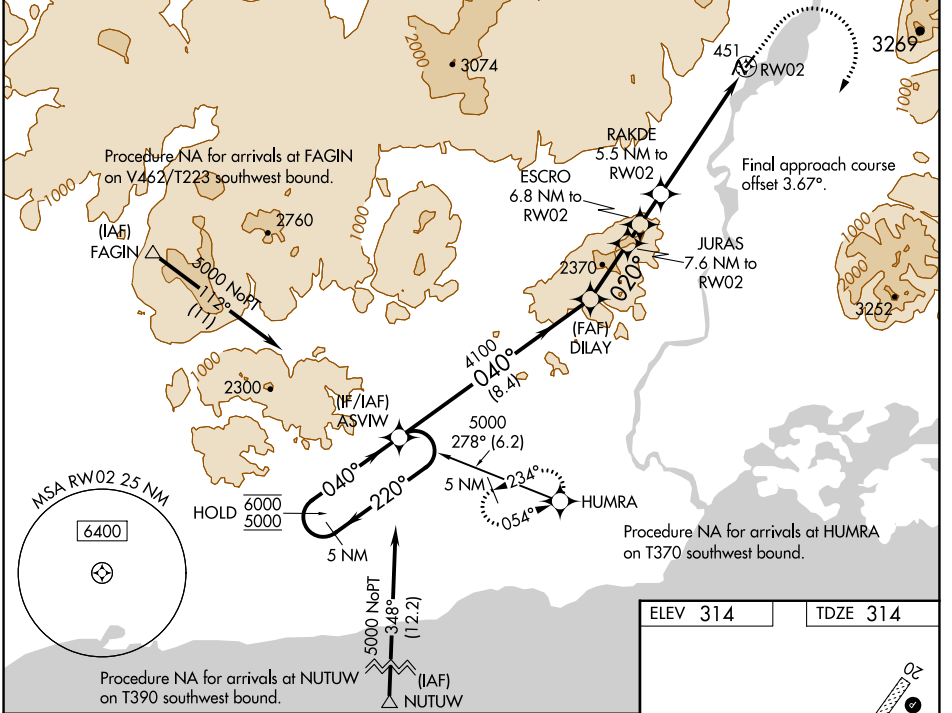
**⚠** Rwy 2 helicopter visibility reduction below 1 SM NA.

**⚠** -13°C Circling NA west of Rwy 2-20. Straight-In Rwy 2 NA at night, Circling Rwy 2 NA at night. Use Iliamna altimeter setting: when not received, procedure NA.

MISSED APPROACH: Climb to 1400 then climbing right turn to 5000 direct HUMRA and hold, continue climb-in-hold to 5000.

\*Missed approach requires minimum climb of 216 feet per NM to 3100.

III/PAIL ASOS <b>134.95</b>	ANCHORAGE CENTER <b>118.8</b>	KENAI RADIO <b>122.2</b>	CTAF <b>122.9</b>
--------------------------------	----------------------------------	-----------------------------	----------------------



CATEGORY	A	B	C	D
LNAV MDA*	1380-1¼ 1066 (1100-1¼)	1380-1½ 1066 (1100-1½)		NA
LNAV MDA	1660-1¼ 1346 (1400-1¼)	1660-1½ 1346 (1400-1½)		NA
<b>C</b> CIRCLING	1660-1¼ 1346 (1400-1¼)	1660-1½ 1346 (1400-1½)		NA

AK, 05 SEP 2024 to 31 OCT 2024

AK, 05 SEP 2024 to 31 OCT 2024