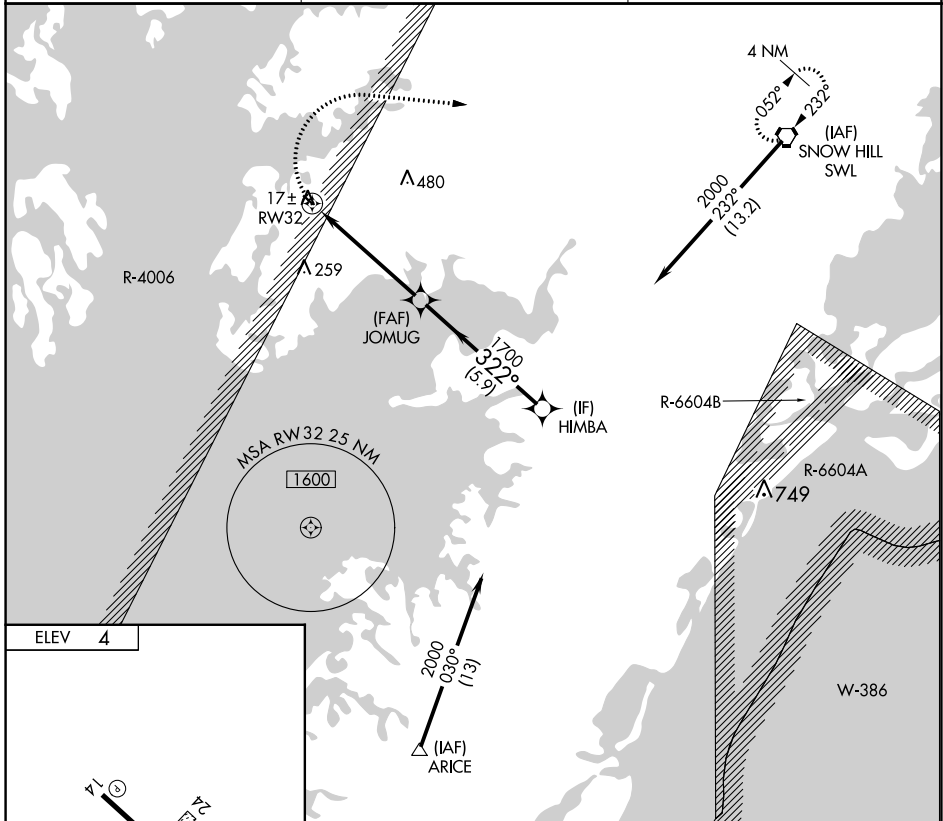


APP CRS 322°	Rwy Idg TDZE Apt Elev	N/A N/A 4
------------------------	-----------------------------	--------------------------------------

RNAV (GPS)-B

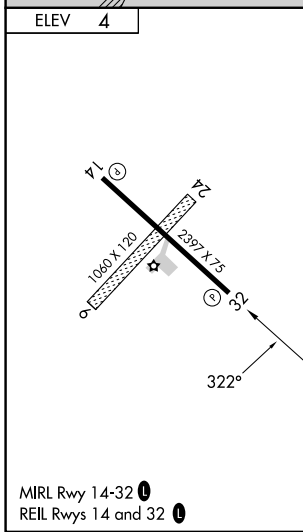
CRISFIELD-SOMERSET COUNTY (W41)

RNP APCH.		MISSED APPROACH: Climbing right turn to 2000 direct SWL VORTAC and hold.
<p>▼ Circling NA to Rwys 6 and 24. ▲ NA Procedure NA at night. Use Wallops Island altimeter setting.</p>		
WAL ASOS 119.175	PATUXENT APP CON ★ 127.95 314.0	UNICOM 122.8 (CTAF) 0



NE-3, 03 OCT 2024 to 31 OCT 2024

NE-3, 03 OCT 2024 to 31 OCT 2024



2000	SWL	Visual Segment - Obstacles.		
CATEGORY	A	B	C	D
C CIRCLING	520-1	516 (600-1)		NA