

WAAS CH <b>93628</b> <b>W25A</b>	APP CRS <b>254°</b>	Rwy Idg TDZE Apt Elev	<b>5000</b> <b>1122</b> <b>1122</b>
--	------------------------	-----------------------------	---

# RNAV (GPS) RWY 25

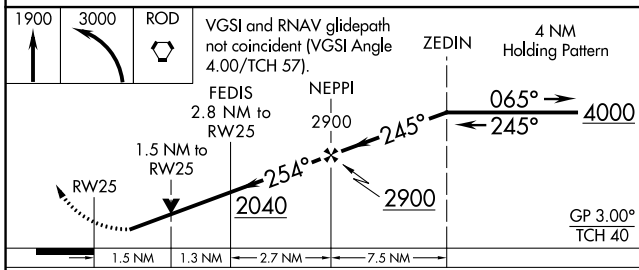
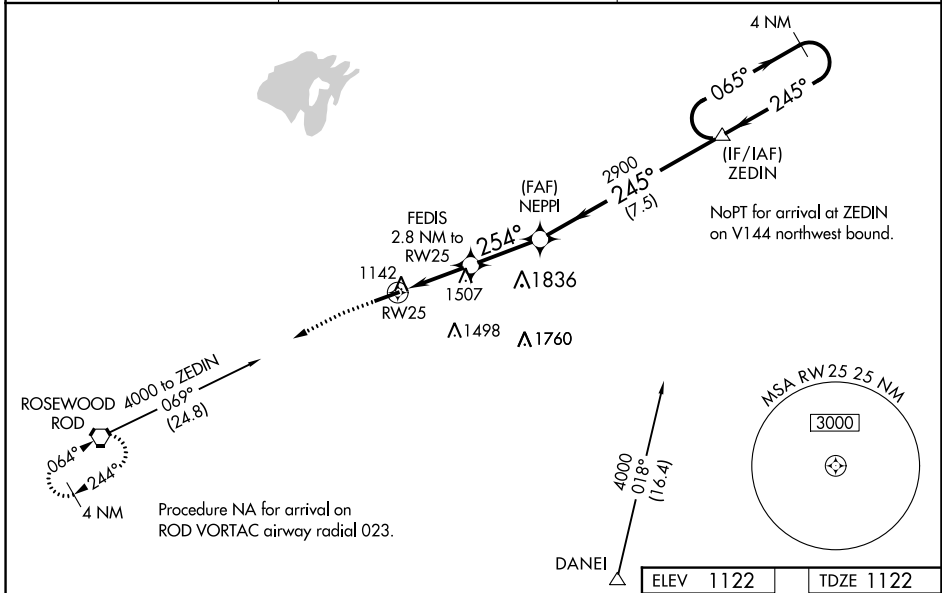
BELLEFONTAINE RGNL (E,D,J)

**RNP APCH - GPS**

**NA** For uncompensated Baro-VNAV systems, LNAV/VNAV NA below -17°C or above 36°C.  
Rwy 25 helicopter visibility reduction below 3/4 SM NA. When local altimeter setting not received, use James M Cox Dayton Intl altimeter setting and increase LPV DA to 1555 feet and all visibilities 1/8 SM; increase LNAV/VNAV DA to 1762 feet; increase all MDAs 100 feet and LNAV visibility Cat B 1/4 SM, Cat C and D 1/2 SM, and Circling visibility Cat B 1/4 SM, Cat C 1/2 SM, Cat D 1/4 SM. Baro-VNAV and VDP NA when using James M Cox Dayton Intl altimeter setting.

**MISSED APPROACH:**  
Climb to 1900 then climbing left turn to 3000 direct ROD VORTAC and hold.

<b>AWOS-3</b> <b>118.075</b>	<b>COLUMBUS APP CON</b> <b>134.45 294.5</b>	<b>UNICOM</b> <b>122.8 (CTAF)</b>
---------------------------------	--	--------------------------------------



CATEGORY	A	B	C	D
LPV DA		1457-1 1/8	335 (400-1 1/8)	
LNAV/VNAV DA		1664-1 7/8	542 (600-1 7/8)	
LNAV MDA	1820-1	698 (700-1)	1820-2	698 (700-2)
CIRCLING	1820-1	698 (700-1)	1860-2 738 (800-2)	1980-2 3/4 858 (900-2 3/4)

ELEV 1122 | TDZE 1122

MIRL Rwy 7-25 (1178)

REIL Rwy 7 and 25

EC-2, 03 OCT 2024 to 31 OCT 2024

EC-2, 03 OCT 2024 to 31 OCT 2024