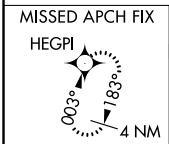
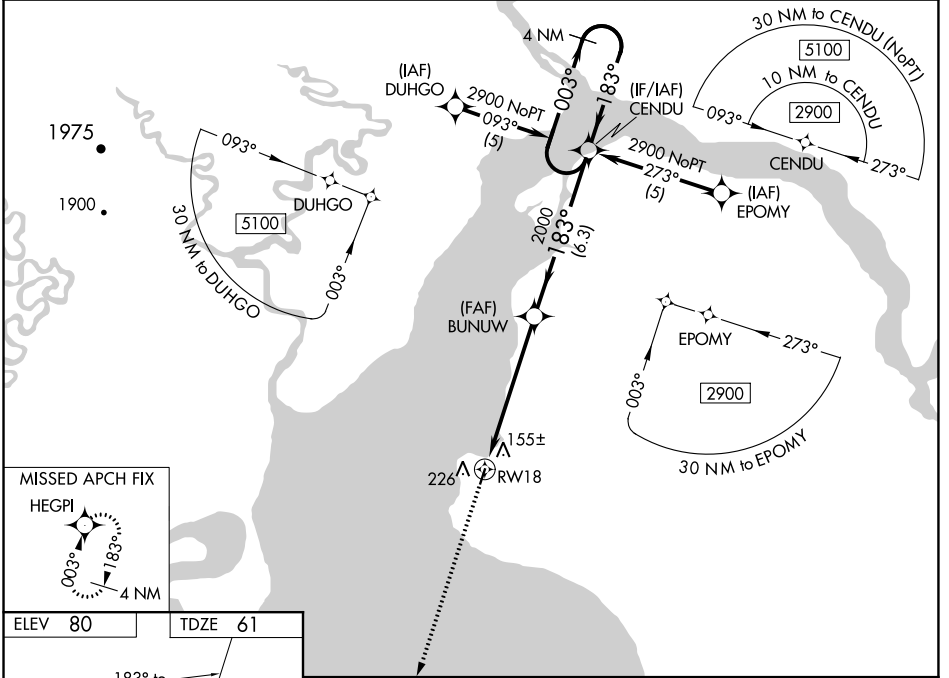


WAAS CH <b>82213</b> <b>W18A</b>	APP CRS <b>183°</b>	Rwy Idg <b>3200</b> TDZE <b>61</b> Apt Elev <b>80</b>
--	------------------------	---

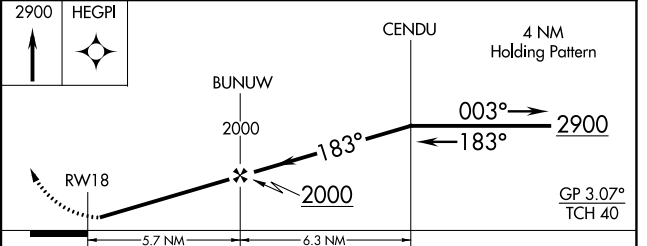
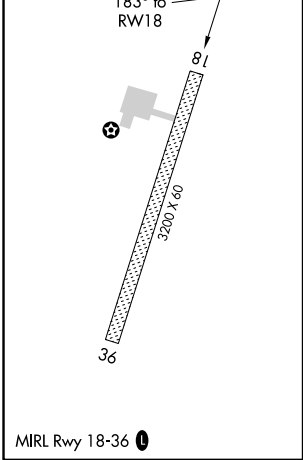
# RNAV (GPS) RWY 18

CLARKS POINT (CLP) (PFCL)

RNP APCH - GPS.		MISSED APPROACH: Climb to 2900 direct HEGPI and hold.
<p>Baro-VNAV NA. Procedure NA at night. When local altimeter setting not received, use Dillingham altimeter setting. Rwy 18 helicopter visibility reduction below 1 SM NA.</p>		
AWOS-3P <b>121.45</b>	ANCHORAGE CENTER <b>132.75 282.35</b>	CTAF <b>122.9</b>



ELEV <b>80</b>	TDZE <b>61</b>
----------------	----------------



CATEGORY	A	B	C	D
LPV DA	355-1 294 (300-1)			
LNAV/VNAV DA	464-1½ 403 (400-1½)			
LNAV MDA	620-1	559 (600-1)	620-1½ 559 (600-1½)	620-1¾ 559 (600-1¾)
CIRCLING	620-1 540 (600-1)	700-1 620 (700-1)	700-1¾ 620 (700-1¾)	700-2 620 (700-2)

AK, 05 SEP 2024 to 31 OCT 2024

AK, 05 SEP 2024 to 31 OCT 2024