

APP CRS 224°	Rwy Idg TDZE Apt Elev 1154	NA NA 1154
------------------------	---	---------------------------------------

RNAV (GPS)-A

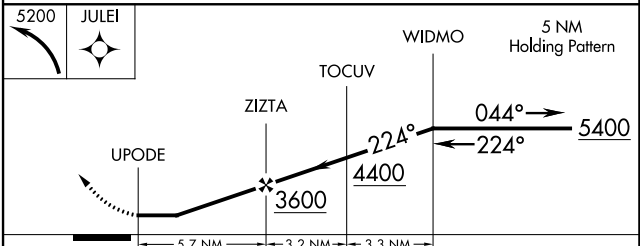
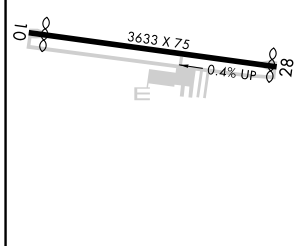
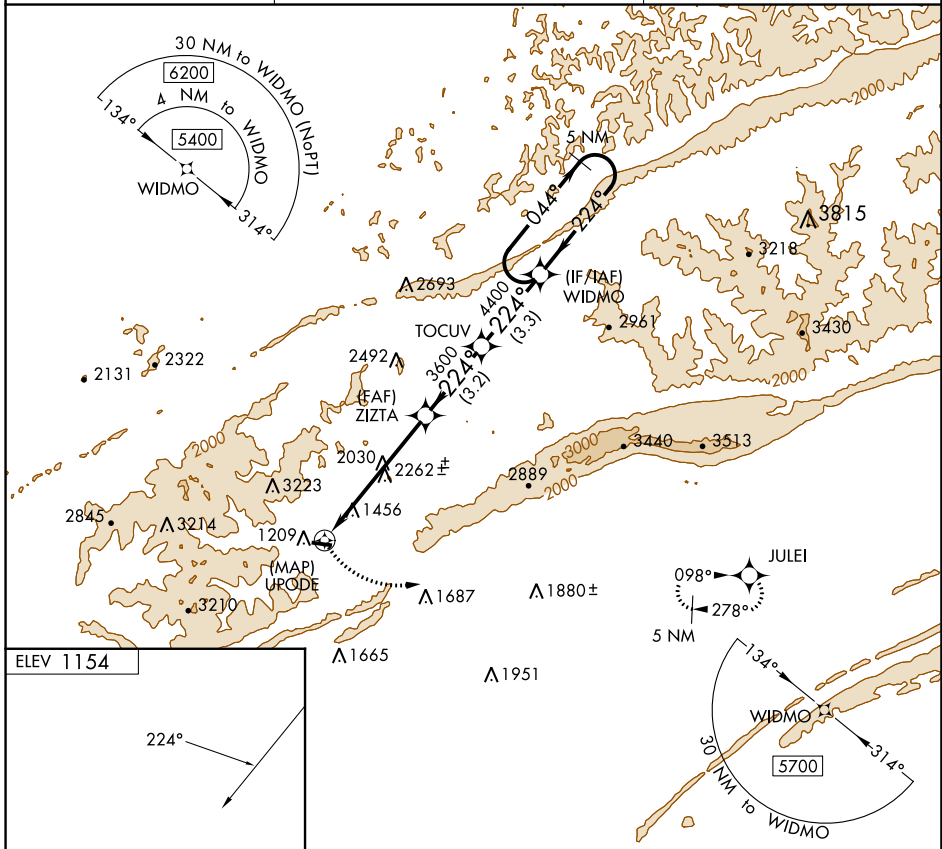
MIDDLESBORO/BELL COUNTY (1A6)

⚠ DME/DME RNP-0.3 NA. When local altimeter setting not received, use London altimeter setting: increase all MDA 100 feet. Procedure NA at night. Helicopter visibility reduction below 1 SM NA.

⚠ MISSED APPROACH: Climbing left turn to 5200 direct JULEI and hold.

⚠ -14°C

AWOS-3 119.425	INDIANAPOLIS CENTER 124.625 371.925	UNICOM 122.8 (CTAF)
--------------------------	---	-------------------------------



REIL Rwys 10 and 28	CIRCLING		C	D
	A	B	NA	
	2780-1¼ 1626 (1700-1¼)	3080-1½ 1926 (2000-1½)		

RNAV (GPS)-A

SE-1, 03 OCT 2024 to 31 OCT 2024

SE-1, 03 OCT 2024 to 31 OCT 2024