

(INDIE8.INDIE) 21280

AL-10328 (FAA)

HOUSTON EXEC (TME)
HOUSTON, TEXAS

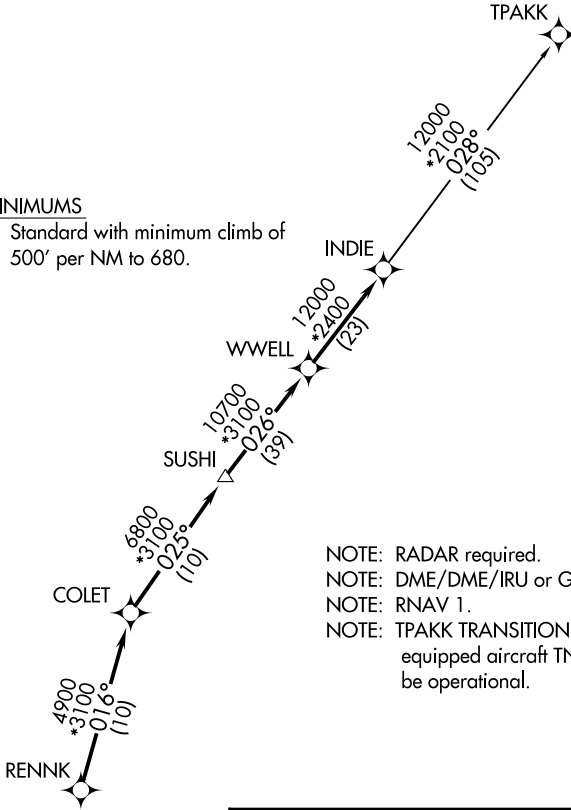
INDIE EIGHT DEPARTURE (RNAV)

ATIS
119.525
CLNC DEL
132.075
GND CON
132.075
EXECUTIVE TOWER★
126.975 (CTAF)
HOUSTON DEP CON
123.8 257.7

**TOP ALTITUDE:
ASSIGNED BY ATC**

TAKEOFF MINIMUMS

Rwy 18, 36: Standard with minimum climb of 500' per NM to 680.



- NOTE: RADAR required.
- NOTE: DME/DME/IRU or GPS required.
- NOTE: RNAV 1.
- NOTE: TPAKK TRANSITION: For non GPS equipped aircraft TNV DME must be operational.

DEPARTURE ROUTE DESCRIPTION

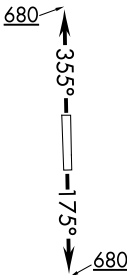
TAKEOFF RUNWAY 18: Climb on heading 175° to 680 for RADAR vectors to RENNK, thence

TAKEOFF RUNWAY 36: Climb on heading 355° to 680 for RADAR vectors to RENNK, thence

. . . . on track 016° to COLET, then on track 025° to SUSHI, then on track 026° to WWELL, then on track 026° to INDIE, then on (transition).

Maintain ATC assigned altitude. Expect filed altitude 10 minutes after departure.

TPAKK TRANSITION (INDIE8.TPAKK)



NOTE: Chart not to scale.

SC-5, 03 OCT 2024 to 31 OCT 2024

SC-5, 03 OCT 2024 to 31 OCT 2024

INDIE EIGHT DEPARTURE (RNAV)
(INDIE8.INDIE) 07OCT21

HOUSTON, TEXAS
HOUSTON EXEC (TME)