

WAAAS CH <b>93632</b> <b>W10A</b>	APP CRS <b>100°</b>	Rwy Idg TDZE <b>928</b> Apt Elev <b>928</b>	<b>4549</b>
---	------------------------	---	-------------

# RNAV (GPS) RWY 10

BOGGS FLD (USW)

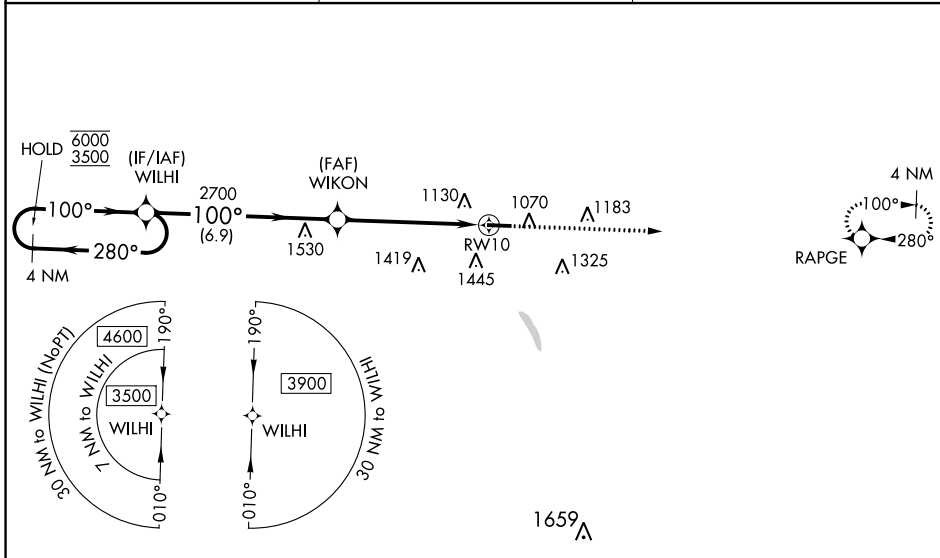
RNP APCH.

**▼** Circling Rwy 28 NA at night. Baro-VNAV and VDP NA when using Charleston altimeter setting. Rwy 10 helicopter visibility reduction below  $\frac{3}{4}$  SM NA. For uncompensated Baro-VNAV systems, LNAV/VNAV NA below  $-16^{\circ}\text{C}$  or above  $54^{\circ}\text{C}$ . When local altimeter setting not received, use Charleston altimeter setting, increase LPV DA to 1247 feet, LNAV/VNAV DA to 1730 feet, and LNAV/VNAV visibility all Cats by  $\frac{1}{2}$  SM; increase all MDAs 80 feet and LNAV visibility Cat B  $\frac{1}{4}$  SM and Cat C and D  $\frac{1}{2}$  SM, and Circling visibility Cats C and D by  $\frac{1}{4}$  SM.

**▲** NA

MISSED APPROACH: Climb to 3200 direct RAPGE and hold.

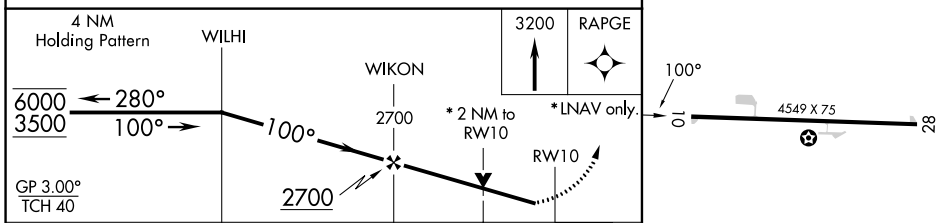
AWOS-3 <b>118.575</b>	CHARLESTON APP CON <b>124.1 269.125</b>	UNICOM <b>122.725 (CTAF) 0</b>
--------------------------	--	-----------------------------------



NE-4, 03 OCT 2024 to 31 OCT 2024

NE-4, 03 OCT 2024 to 31 OCT 2024

ELEV 928	TDZE 928
----------	----------



CATEGORY	A	B	C	D
LPV DA		1178-1	250 (300-1)	
LNAV/VNAV DA		1661-2	733 (800-2)	
LNAV MDA	1620-1	692 (700-1)	1620-2	692 (700-2)
<b>C</b> CIRCLING	1620-1 692 (700-1)	1760-1 $\frac{1}{4}$ 832 (900-1 $\frac{1}{4}$ )	1760-2 $\frac{1}{2}$ 832 (900-2 $\frac{1}{2}$ )	1760-2 $\frac{3}{4}$ 832 (900-2 $\frac{3}{4}$ )

MIRL Rwy 10-28 0