

WAAS CH <b>62928</b> <b>W28A</b>	APP CRS <b>280°</b>	Rwy Idg TDZE <b>928</b> Apt Elev <b>928</b>	<b>4549</b>
--	------------------------	---	-------------

# RNAV (GPS) RWY 28

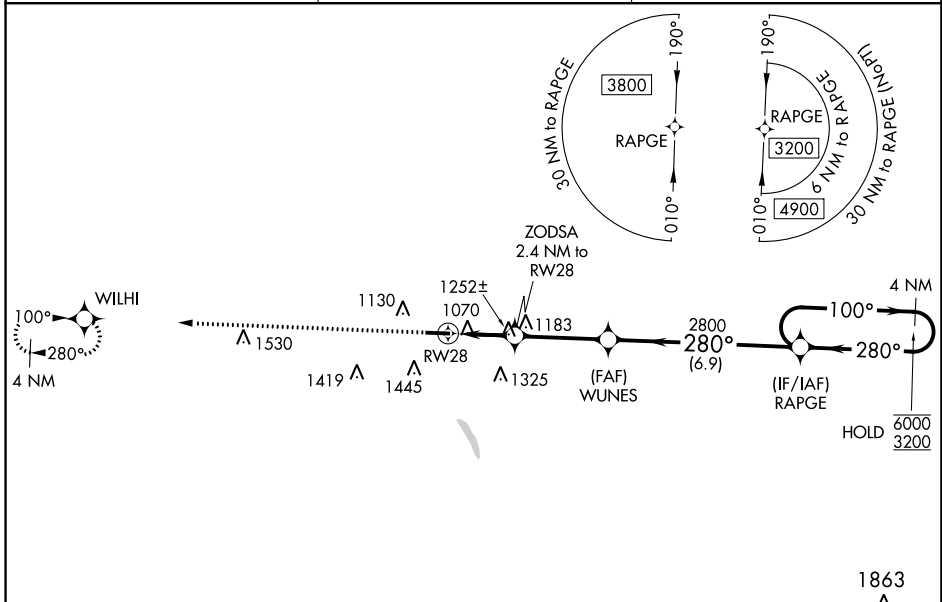
BOGGS FLD (USW)

RNP APCH.

**▼** Rwy 28 helicopter visibility reduction below 1 SM NA. Rwy 28 Straight-in and Circling minimums NA at night. When local altimeter setting not received, use Charleston altimeter setting and increase all MDA's 80 feet, LP and LNAV Cats C and D visibility  $\frac{1}{8}$  SM and Circling Cats C and D visibility  $\frac{1}{4}$  SM. \*1780 when using Charleston altimeter setting.

**MISSED APPROACH:**  
Climb to 3500 direct WILHI and hold.

AWOS-3 <b>118.575</b>	CHARLESTON APP CON <b>124.1 269.125</b>	UNICOM <b>122.725 (CTAF) 0</b>
--------------------------	--	-----------------------------------



ELEV 928	TDZE 928
----------	----------

Profile view showing altitudes: 3500, 1720\*, 2800, 6000, 3200. Distances: 2.4 NM, 3.4 NM, 6.9 NM. Obstacles: WILHI, WUNES, RAPGE.

**Visual Segment - Obstacles.**

CATEGORY	A	B	C	D
LP MDA	1520-1	592 (600-1)	1520-1 $\frac{3}{4}$	592 (600-1 $\frac{3}{4}$ )
LNAV MDA	1520-1	592 (600-1)	1520-1 $\frac{3}{4}$	592 (600-1 $\frac{3}{4}$ )
<b>CIRCLING</b>	1560-1 632 (700-1)	1760-1 $\frac{1}{4}$ 832 (900-1 $\frac{1}{4}$ )	1760-2 $\frac{1}{2}$ 832 (900-2 $\frac{1}{2}$ )	1760-2 $\frac{3}{4}$ 832 (900-2 $\frac{3}{4}$ )

NE-4, 03 OCT 2024 to 31 OCT 2024

NE-4, 03 OCT 2024 to 31 OCT 2024