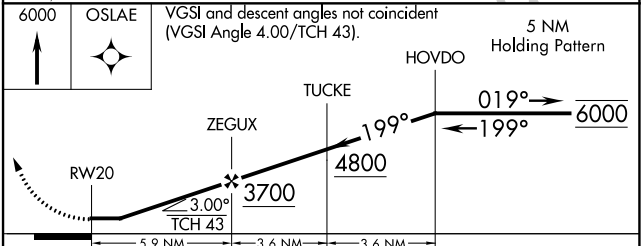
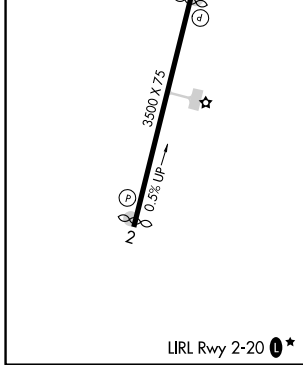
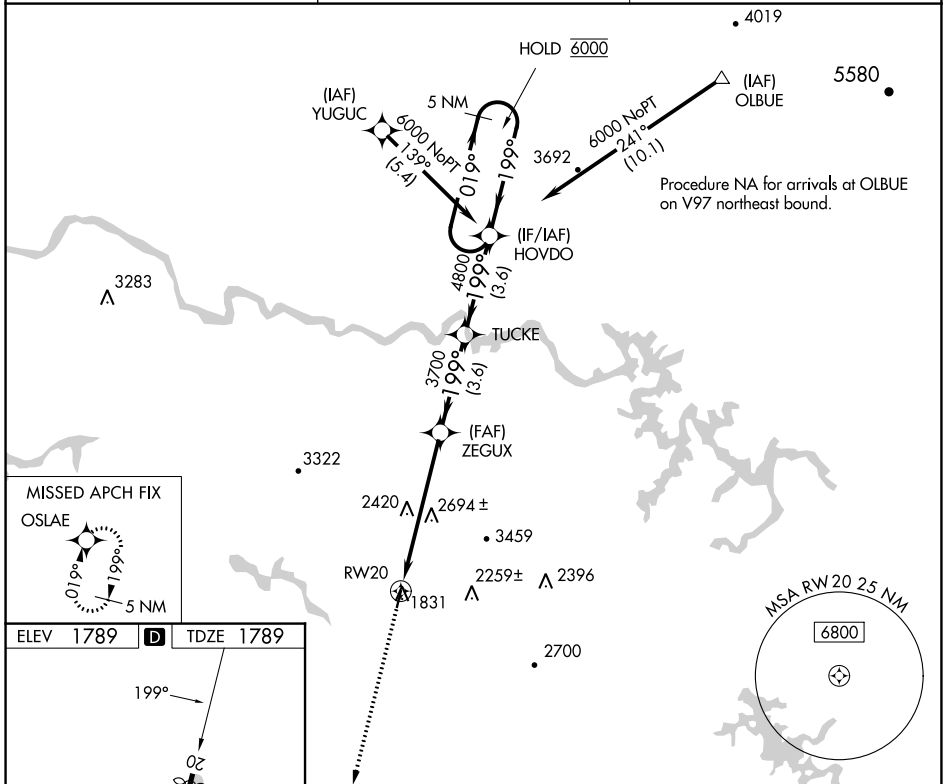


WAAS CH <b>86825</b> <b>W20A</b>	APP CRS <b>199°</b>	Rwy Idg TDZE Apt Elev	<b>3270</b> <b>1789</b> <b>1789</b>
--	------------------------	-----------------------------	---

# RNAV (GPS) RWY 20

MARTIN CAMPBELL FLD (1A3)

RNP APCH - GPS.		MISSED APPROACH: Climb to 6000 direct OSLAE and hold, continue climb in hold to 6000.	
<p>▼ Procedure NA at night. Rwy 20 helicopter visibility reduction below 1 SM NA.</p> <p>▲ NA Use Andrews altimeter setting, when not received, use Dalton altimeter setting and increase all MDAs 160 feet.</p>			
RHP AWOS-3 <b>119.675</b>	ATLANTA CENTER <b>133.1 342.425</b>	CTAF <b>122.90*</b>	



CATEGORY	A	B	C	D
LP MDA	2960-1¼ 1171 (1200-1¼)	2960-1½ 1171 (1200-1½)	2960-3 1171 (1200-3)	NA
LNAV MDA	3020-1¼ 1231 (1300-1¼)	3020-1½ 1231 (1300-1½)	3020-3 1231 (1300-3)	NA

SE-1, 03 OCT 2024 to 31 OCT 2024

SE-1, 03 OCT 2024 to 31 OCT 2024