

APP CRS 257°	Rwy Idg 5001
	TDZE 1883
	Apt Elev 1883

RNAV (GPS) RWY 26

SOUTHERN WEST VIRGINIA RGNL (E,B,D)

RNP APCH - GPS.

- ▼ Obtain local altimeter setting on CTAF; when not received, use Beckley altimeter setting: increase all MDAs 140 feet and visibility LNAV
- ▲ NA Cat A and Circling Cat A/B ¼ SM and Circling Cat C ½ SM.

MISSED APPROACH: Climb to 5000 direct SEPBU and hold.

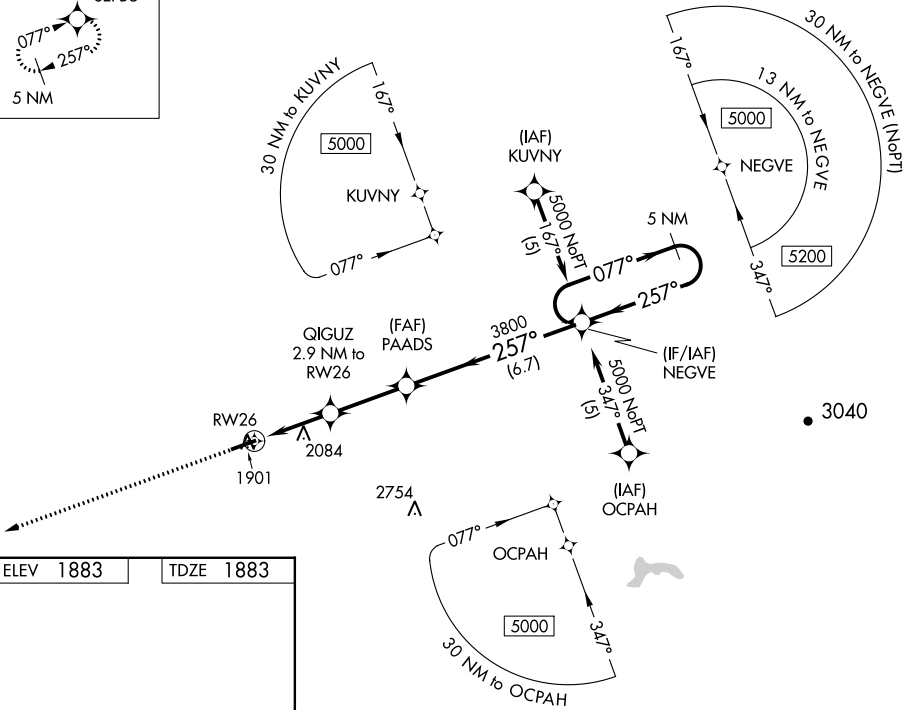
116 AWOS-3
120.625

INDIANAPOLIS CENTER
126.575 257.85

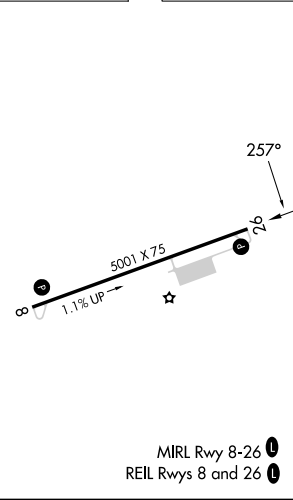
UNICOM
122.8 (CTAF) 0

MISSED APCH FIX

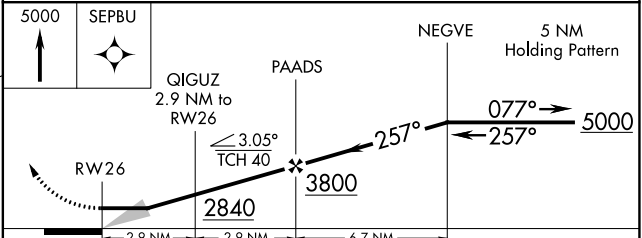
SEPBU



ELEV 1883 TDZE 1883



MIRL Rwy 8-26
REIL Rwys 8 and 26



CATEGORY	A	B	C	D
LNAV MDA	2660-1 777 (800-1)	2660-1¼ 777 (800-1¼)	2660-2½	777 (800-2½)
CIRCLING	2680-1	797 (800-1)	2760-2½ 877 (900-2½)	2900-3 1017 (1100-3)

NE-4, 03 OCT 2024 to 31 OCT 2024

NE-4, 03 OCT 2024 to 31 OCT 2024