

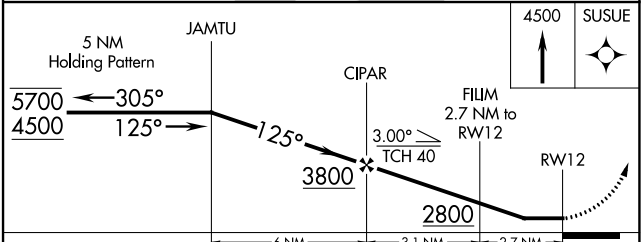
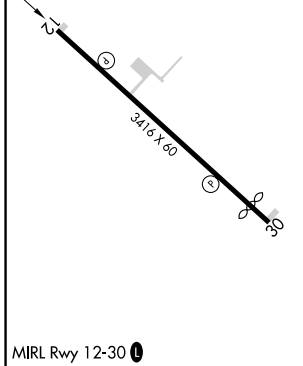
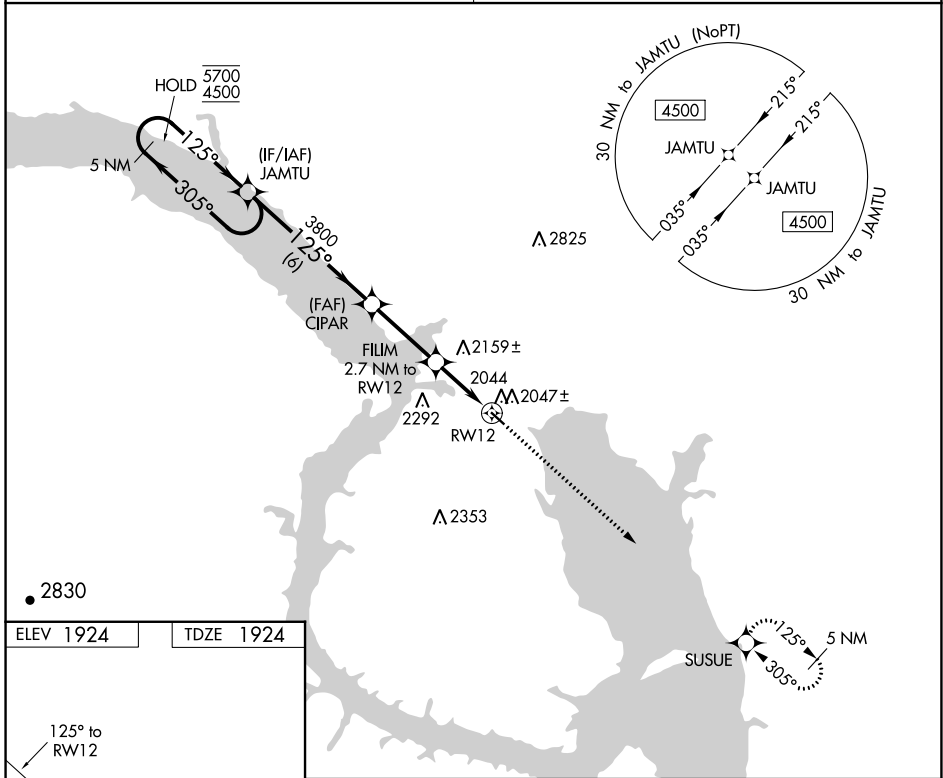
| | | |
|-------------|----------|-------------|
| APP CRS | Rwy Idg | 3416 |
| 125° | TDZE | 1924 |
| | Apt Elev | 1924 |

RNAV (GPS) RWY 12

NEW TOWN MUNI (Ø5D)

| | |
|---|---|
| RNP APCH. | MISSED APPROACH: Climb to 4500 direct SUSUE and hold. |
| <p>▼ Use Stanley altimeter setting, when not received, use Tioga altimeter setting and increase all MDAs 40 feet. Increase Cat C visibilities ¼ SM. Rwy 12 helicopter visibility reduction below ¾ SM NA.</p> <p>▲ NA</p> | |

| | |
|--|----------------------|
| MINNEAPOLIS CENTER 127.6 279.6 | CTAF 122.9 |
|--|----------------------|



| CATEGORY | A | B | C | D |
|-------------------|-----------------------|-----------------------|--|----|
| LNAV MDA | 2440-1 | 516 (600-1) | 2440-1 $\frac{3}{8}$ 516 (600-1 $\frac{3}{8}$) | NA |
| C CIRCLING | 2520-1 596 (600-1) | 2620-1 696 (700-1) | 2780-2 $\frac{1}{2}$ 856 (900-2 $\frac{1}{2}$) | NA |

NC-1, 03 OCT 2024 to 31 OCT 2024

NC-1, 03 OCT 2024 to 31 OCT 2024