

## NOME

**NOME** (OME)(PAOM) 2 W UTC-9(-8DT) N64°30.75' W165°26.66'

**NOME**

41 B TPA—See Remarks LRA ARFF Index—See Remarks NOTAM FILE OME

H-1A, 2I, L-3A, 3B, 4H

**RWY 03-21:** H6176X150 (ASPH-GRVD) S-120, D-250, 2D-550

PCR 719 F/A/X/T MIRL 0.4% up NE

**RWY 03:** REIL. PAPI(P4L)—GA 3.0° TCH 29'. Thld dsplcd 600'. Road.

**RWY 21:** PAPI(P4L)—GA 3.0° TCH 32'. Thld dsplcd 601'. Pole.

**RWY 10-28:** H6009X150 (ASPH-GRVD) S-150, D-250, 2D-550

PCR 719 F/A/X/T HIRL

**RWY 10:** REIL. PAPI(P4L)—GA 3.0° TCH 38'. RVR-R Hill.

**RWY 28:** MALSR. PAPI(P4L)—GA 3.0° TCH 51'. RVR-T Hill.

**RUNWAY DECLARED DISTANCE INFORMATION**

**RWY 03:** TORA-6176 TODA-6176 ASDA-6176 LDA-5576

**RWY 10:** TORA-6009 TODA-6009 ASDA-6009 LDA-6009

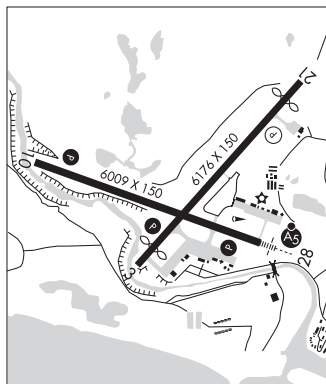
**RWY 21:** TORA-5576 TODA-5576 ASDA-5576 LDA-5576

**RWY 28:** TORA-6009 TODA-6009 ASDA-6009 LDA-6009

**ARRESTING GEAR/SYSTEM**

**RWY 28:** EMAS

**SERVICE:** S2 FUEL 100LL, JET A, A1+ LGT ACTVT MALSR Rwy 28; REIL Rwy 03 and 10; PAPI Rwy 03, 10, and 28; HIRL Rwy 10-28; MIRL Rwy 03-21—CTAF. Rwy 21 PAPI opr consly. PAPI unusbl byd 2 NM fm thr due to rapidly rising terrain. Rwy 03-21 and Rwy 10-28 edge intens rwy lgts 30 in abv gnd.



**AIRPORT REMARKS:** Attended 1600-0330Z±. Birds invof arpt Sep-Oct and May-Jun. Class I, ARFF Index B. ARFF svc durg acr ops only; acr ops more than 30 pax seats PPR in writing—AMGR PO Box 1048, Nome AK 99762. Numerous wind turbine twrs 820' MSL (130' AGL) 4 NM NNW lgt. Rwy 21 and 28 maintain TPA until final. 100LL hrs vrb-aftr AMGR. Airfield maint svcs avbl 1600-1730Z±; aftr hr-AMGR. (ANG) Aviation Operating Facility—ANG Hngr 907-387-1800. Ops 1700-0100Z±; ltd maintenance and svcs avbl. Arpt sand larger gradation than FAA recommended/see AC150/5200-30. Rwy 03 apch slope 26:1 due to 35 ft road 1128 ft from dthr. Rwy 21 apch slope 34:1 due to 69 ft pole 1550 ft from dthr. TSA reg; see 49 CFR 1542. Gates and doors must be secured H24. Info-AMGR. Transient or unfamiliar pilots contact airport manager with questions.

**AIRPORT MANAGER:** 907-443-2500

**WEATHER DATA SOURCES:** ASOS 119.925 (907) 443-4818. (WX CAM)

**COMMUNICATIONS:** CTAF 123.6 AFIS 119.925 (1615-0745Z±; OT ctc Fairbanks FSS)

FSS OME (NOME) 1615-0745Z±; OT ctc Fairbanks FSS.

**NOME RADIO** 121.5 122.2 122.45 123.6 243.0 (LAA 123.6)

**ANCHORAGE CENTER APP/DEP CON** 133.3 290.4

**AIRSPACE:** CLASS E svc continuous.

**RADIO AIDS TO NAVIGATION:** NOTAM FILE OME.

(H) (H) VORW/DME 115.0 OME Chan 97 N64°29.11' W165°15.19' 278° 5.2 NM to fld. 95/11E.

**FORT DAVIS NDB (HW)** 529 FDV N64°29.68' W165°18.91' 277° 3.5 NM to fld. 117/11E.

ILS/DME 108.7 I-OME Chan 24 Rwy 28. Localizer backcourse unusable within 1.0 DME. DME unmonitored.

**COMM/NAV/WEATHER REMARKS:** For a LC to Nome FSS dial 907-443-2291. For a toll free call to Nome FSS dial 1-800-478-8400. For a toll free call to Fairbanks FSS dial 1-866-248-6516. AFIS operd by OME FSS when open, OT Fairbanks FSS.