

**TAZLINA/SMOKEY LAKE SPB** (5AK) O E UTC-9(-8DT) N62°03.81' W146°26.97'

ANCHORAGE

2415 NOTAM FILE ENA

**WATERWAY 06W-24W:** 2280X600 (WATER)

**SEAPLANE REMARKS:** Attended daylight. Lodge clsd; Docks NA; Pvt ramp and hangar SW of lodge.

**AIRPORT MANAGER:** 907-822-3061

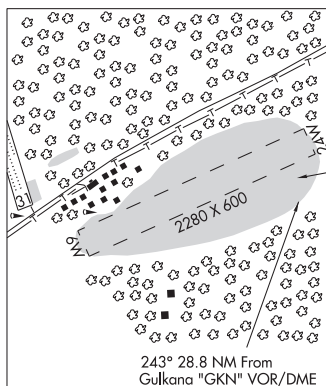
**COMMUNICATIONS:** CTAF 122.9

**RADIO AIDS TO NAVIGATION:** NOTAM FILE GKN.

**GULKANA (H) VOR/DME** 115.6 GKN Chan 103 N62°09.23'

W145°26.84' 243° 28.8 NM to fid. 1549/17E.

**COMM/NAV/WEATHER REMARKS:** For a toll free call to Kenai FSS dial 1-866-864-1737.



**TED STEVENS ANCHORAGE INTL** (See ANCHORAGE on page 47)

**TELIDA** (2K5) O S UTC-9(-8DT) N63°22.74' W153°17.05'

MC GRATH

650 NOTAM FILE ENA

**RWY 02-20:** 1900X40 (TURF-DIRT) 0.5% up NE

**RWY 02:** Trees.

**RWY 20:** Trees.

**AIRPORT REMARKS:** Unattended. Large wildlife may be on the rwy.

Windsock is missing. Rwy cond not monitored; recommend visual inspection prior to lndg. Caution, rwy can be very soft and unstable due soft and shifting sand along the rwy surface. Dust blows along runway surface in high winds. Rwy 02-20 irregular, rutted surface varies btn turf, dirt, and sand. Rwy 02-20 southwest end of rwy is unusbl due to brush, small trees, dips, humps, and sand dunes greater than 2 ft. Northeast 900 ft of rwy is often usbl but very soft. First 150 ft of apch end of Rwy 20 is unusbl. Rwy 02-20 sfc is dominated by soft sand; sfc ireg & rutted. Rwy 02-20 center 18 ft of rwy becoming depressed from use.

**COMMUNICATIONS:** CTAF 122.9

**RADIO AIDS TO NAVIGATION:** NOTAM FILE MHM.

**MINCHUMINA NDB (HW)** 227 MHM N63°53.03'

W152°18.97' 204° 39.9 NM to fid. 713/17E.

NDB unusable:

230°-240°

345°-350° byd 25 NM

**COMM/NAV/WEATHER REMARKS:** For a toll free call to Kenai FSS dial 1-866-864-1737.

