

**AKRON-CANTON RGNL** (CAK)(KCAK) P (ARNG) 10 SE UTC-5(-4DT) N40°54.90' W81°26.62'

**DETROIT**

1226 B LRA ARFF Index—See Remarks NOTAM FILE CAK MON Airport

**H-10G, L-29B**

**RWY 05-23:** H8204X150 (ASPH-GRVD) S-120, D-160, 2S-175,

**IAP, AD**

2D-250 PCR PCR 410/F/B/X/U. HIRL

**RWY 05:** MALSR. PAPI(P4L)—GA 3.0° TCH 50'. RVR-TR 0.5% up.

**RWY 23:** MALSR. PAPI(P4L)—GA 3.0° TCH 47'. RVR-TR 0.6% down.

**RWY 01-19:** H7601X150 (ASPH-GRVD) S-120, D-160,

2S-175, 2D-250 PCR PCR 410/F/B/X/U. HIRL

**RWY 01:** MALSR. RVR-TR

**RWY 19:** MALSR. PAPI(P4L)—GA 3.0° TCH 53'. RVR-TR

Thld dspcd 601'.

**LAND AND HOLD—SHORT OPERATIONS**

LDG RWY	HOLD—SHORT POINT	AVBL LDG DIST
RWY 05	01-19	5723
RWY 19	05-23	3100

**RUNWAY DECLARED DISTANCE INFORMATION**

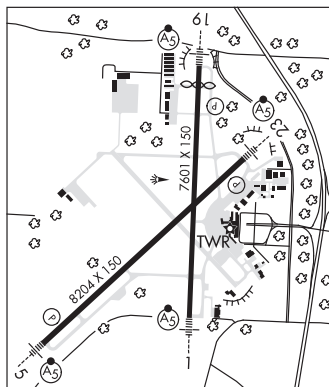
**RWY 01:** TORA-7601 TODA-7601 ASDA-7007 LDA-7007

**RWY 05:** TORA-8204 TODA-8204 ASDA-8204 LDA-8204

**RWY 19:** TORA-7601 TODA-7601 ASDA-7601 LDA-7007

**RWY 23:** TORA-8204 TODA-8204 ASDA-8204 LDA-8204

**SERVICE:** S4 FUEL 100LL, JET A OX 1, 2 MILITARY— FUEL A, A+ (C330-494-6104) (NC-100LL).



**AIRPORT REMARKS:** Attended continuously. All acft taxiing on Air Camis

Ramp and north hangar areas not visible from twr. Deer and birds on

and infov arpt. Class I, ARFF Index B, ARFF svc not avbl 0100-0500 local (0600-1000Z) daily. One hour PPR for unsked air carrier ops, call arpt manager 330-499-4059. Twy E east of Twy B clsd to acft over 118' wingspan.

Non-commercial landing fee: multi-engine only. Flight Notification Service (ADCUS) avbl. NOTE: See Special

Notices—Arrival Alert.

**AIRPORT MANAGER:** 330-754-5233

**WEATHER DATA SOURCES:** ASOS (330) 493-5260

**COMMUNICATIONS:** ATIS 121.05 UNICOM 122.95

Ⓡ CLEVELAND APP/DEP CON 118.6 (187°-006°) 125.5 (007°-186°) (1100-0600Z)

Ⓡ CLEVELAND CENTER APP/DEP CON 134.9 (0600-1100Z) ctc Cleveland ARTCC at 440-774-0223.

**TOWER** 134.75 **GND CON** 121.7 **CLNC DEL** 132.05

**ARNG OPS** 40.1 138.55 226.9

**CLEARANCE DELIVERY PHONE:** For CD ctc Cleveland ARTCC at 440-774-0223.

**AIRSPACE:** CLASS C svc ctc APP CON svc 1100-0600Z; other times CLASS D.

**VOR TEST FACILITY (VOT)** 110.6

**RADIO AIDS TO NAVIGATION:** NOTAM FILE CAK.

(L) (L) VORW/DME 114.4 ACO Chan 91 N41°06.47' W81°12.09' 228° 16.0 NM to fld. 1197/4W.

DME unusable:

Byd 10 NM

ILS 109.5 I-CAK Rwy 01. Class IA.

ILS/DME 108.3 I-EQX Chan 20 Rwy 05. Class IE.

ILS 109.5 I-RGO Rwy 19. Class IE.

ILS/DME 108.3 I-GGZ Chan 20 Rwy 23. Class IE. DME unusable byd 3° r of course.

**MAYFIELD** (1D4) 5 SE UTC-5(-4DT) N40°59.55' W81°25.91'

**DETROIT**

1100 NOTAM FILE CLE

**RWY 09-27:** 2315X110 (TURF) 0.3% up E

**RWY 09:** Thld dspcd 180'. Trees.

**RWY 27:** Thld dspcd 590'. Trees. Rgt tfc.

**AIRPORT REMARKS:** Attended irregularly. Deer, birds, and wildlife on and infov airport. Rwy 09-27 rolling trrm, Rwy 27 upslope

W end 12' higher than E end. Open to the public, wx and conds pmgt, ldg fees. No prkg, fees may apply. No UAS, or similar acft pmtd. No unauthorized vehicles, no trespassing. Rwy 09-27 mxd with tires at rwy end and dthr only.

**AIRPORT MANAGER:** 330-699-3066

**COMMUNICATIONS:** CTAF 122.9

**CLEARANCE DELIVERY PHONE:** For CD ctc Cleveland Apch at 216-352-2323, when Apch clsd ctc Cleveland ARTCC at 440-774-0223.

**ALDERMAN** (See ST CLAIRSVILLE on page 311)

**ALEXANDER SALAMON** (See WEST UNION on page 324)