

**RICKENBACKER INTL** (LCK)(KLCK) P (ANG ARNG) 10 S UTC-5(-4DT) N39°48.83' W82°55.67'

**CINCINNATI**  
H-10G, L-29A  
IAP, DIAP, AD

744 B TPA—See Remarks LRA ARFF Index—See Remarks NOTAM FILE LCK

**RWY 05R-23L:** H12103X200 (ASPH-CONC-GRVD) S-75, D-210, 2S-175, 2D-380, 2D/2D2-850 PCN 92 R/C/W/T HIRL CL  
**RWY 05R:** ALSF2. TDZL. PAPI(P4L)—GA 3.0° TCH 69'. RVR-T  
**RWY 23L:** MALSR. PAPI(P4L)—GA 3.0° TCH 78'. RVR-T  
**RWY 05L-23R:** H11902X150 (ASPH-GRVD) S-75, D-190, 2S-175, 2D-320, 2D/2D2-825 PCN 69 F/B/W/T HIRL  
**RWY 05L:** MALSR. PAPI(P4L)—GA 3.0° TCH 70'. Thld dsplcd 898'.  
**RWY 23R:** REIL. PAPI(P4L)—GA 3.0° TCH 79'. Thld dsplcd 989'.

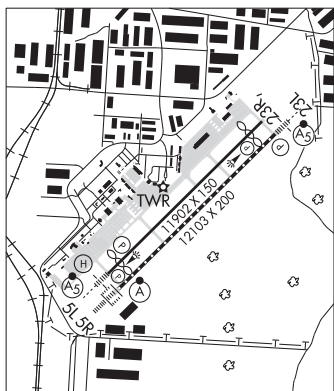
**RUNWAY DECLARED DISTANCE INFORMATION**

**RWY 05L:**TORA-11902 TODA-11902 ASDA-11902 LDA-11004  
**RWY 05R:**TORA-12103 TODA-12103 ASDA-12103 LDA-12103  
**RWY 23L:**TORA-12103 TODA-12103 ASDA-12103 LDA-12103  
**RWY 23R:**TORA-11902 TODA-11902 ASDA-11902 LDA-10913

**SERVICE:** S4 FUEL 100LL, JET A, A++ LGT Bdry lgt avbl.

**MILITARY—JASU** 6(A/M32A-86) 9(B809) 4(AM32-95) FUEL J8(Mil), 100LL, A, A+, FLUID SP PRESAIR LHOX OIL O-128 TRAN ALERT Ltd svc avbl but no PPR rq. No ANG tran svc off ANG Ramp.

**NOISE:** Noise abatement proc in efct fm 0400-1200Z±, DEP Rwy 23L & 23R winds 10 knots or less; ARR Rwy 05L & 05R winds 10 knots or less; arpt ops 614-374-1869.



**AIRPORT REMARKS:** Attended continuously. Birds on and invof arpt. Class I, ARFF Index B. Index E ARFF equip avbl upon request, ctc arpt ops 614-374-1869. TPA for lgt acct weighing 12,500 lbs or less 1400(656), TPA for acct greater than 12,500 lbs 1900(1156), TPA for overhead ttc 2400(1656). To req ldg rights ctc US Customs between 1230-0300Z± Mon-Fri at 614-497-1865. Acft gtr than 300,000 lb rstrd to Rwy 05R-23L when both rwyvs avbl. Lndg fee.

**MILITARY REMARKS:** See FLIP AP/1 Supplementary Arpt Remarks. **RSTD** AMC acct opr restricted during Bird Watch Conditions Moderate (tkf and ldg permission only when departure/arrival routes avoid identification bird activity, no local IFR/VFR ttc pattern) and Severe (tkf and ldg prohibited without OG/CC approval) ctc Comd Post for current Bird Watch Con code. All fixed wing military acct requiring parking and/or svc on 121 ARW ramp must have PPR number 48 hr prior from Base OPS DSN 696-4595, C614-492-4595. Base OPS hr vary. Clsd holidays. **CAUTION** Bird and deer hazard. **ANG** 121 ARW KC-135-R Comd Post DSN 696-4468. Limited tran svc avbl, weekdays 1200-2000Z± except hols. Limited tran fuel/parking, tran aircrew must assist/perform refuel opr. Fuel avbl on ANG ramp on prior request only. Acft support not coordinated by PPR 48 hr prior with 121 ARW may not be avbl. **ARNG** Opr 1200-2100Z± weekdays except hols. No tran svc after 1900Z±, DSN 346-6411, C614-336-6411, C614-336-6411. Ctc C-26 OPS prior to entering C-26 ramp/parking area, DSN 346-6473, C614-336-6473.

**AIRPORT MANAGER:** 614-239-4000

**WEATHER DATA SOURCES:** AWOS-3 (614) 492-2441

**COMMUNICATIONS:** ATIS 132.75 UNICOM 122.95

Ⓡ **COLUMBUS APP/DEP CON** 134.0 279.6

**RICKENBACKER TOWER** 120.05 348.4 **GND CON** 125.275 275.8

**CLNC DEL** 125.275 275.8

**ANG COMD POST** 238.8 (Call RICK CON) **ARNG OPS** 123.09 142.6 228.8 36.7

**ARNG C-26 OPS** 139.3 (Call TORSO OPS) **ARW OPS** 238.8 (Call BRUTUS OPS)

**AIRSPACE:** CLASS D.

**RADIO AIDS TO NAVIGATION:** NOTAM FILE DAY.

**APPLETON (VH) (H) VORTAC** 116.7 APE Chan 114 N40°09.06' W82°35.30' 224° 25.6 NM to fld. 1354/6W.

VOR unusable:

025°-030°

TACAN AZIMUTH unusable:

075°-095°

110°-115°

DME unusable:

075°-080°

**COBBS NDB (LOMW)** 253 DD N39°44.58' W83°01.22' 052° 6.0 NM to fld. 705/7W. NOTAM FILE LCK.

**PICKL NDB (LOMW)** 376 LC N39°52.86' W82°50.16' 233° 5.9 NM to fld. 764/7W. NOTAM FILE LCK.

**ILS/DME** 110.55 I-FQS Chan 42(Y) Rwy 05L. Class IE.

**ILS/DME** 110.1 I-DDV Chan 38 Rwy 05R. Class IIE. LOM COBBS NDB.

**ILS** 110.1 I-LCK Rwy 23L. Class IE. LOM PICKL NDB. Autopilot cpd apch NAW blw 1,000'.

**COMM/NAV/WEATHER REMARKS:** Ctc GND CTL for CLNC prior to pushback onto Twy A from Cargo Ramp 2.

• • • • •

**HELIPAD H1:** H50X50 (CONC)

**CONCORD AIRPARK** (See PAINESVILLE on page 307)

**COOK** (See URBANA on page 318)