

## TIFFIN

**SENECA CO** (16G) 2 SW UTC-5(-4DT) N41°05.64' W83°12.75'

786 B NOTAM FILE CLE

**RWY 06-24:** H4000X75 (ASPH) MIRL

**RWY 06:** REIL. PAPI(P4L)—GA 3.0° TCH 38'.

**RWY 24:** REIL. PAPI(P4L)—GA 3.0° TCH 38'. Trees.

**SERVICE:** S4 FUEL 100LL, JET A+ OX 1, 2, 3 LGT Actvt REIL Rwy 06 and 24; PAPI Rwy 06 and 24; MIRL Rwy 06-24—CTAF. Rwy 06 PAPI unusbl byd 5° left of cntrln. Rwy 24 PAPI unusbl byd 4° left and 8° right of cntrln.

**AIRPORT REMARKS:** Attended Mon-Fri 1300Z±-Dusk, Sat 1300-2100Z±, and Sun 1400-2000Z±. Unatndd major hols. 100LL and JetA+ avbl aft hrs and hols self svc via credit card..

**AIRPORT MANAGER:** 419-447-1550

**WEATHER DATA SOURCES:** AWOS-3 127.175 (419) 443-1043.

**COMMUNICATIONS:** CTAF/UNICOM 123.0

Ⓡ **TOLEDO APP/DEP CON** 120.8

**CLEARANCE DELIVERY PHONE:** For CD ctc Toledo Apch at 419-865-1495.

**RADIO AIDS TO NAVIGATION:** NOTAM FILE FDY.

**FLAG CITY (L) (L) VORTACW** 108.2 FBC Chan 19 N40°57.32' W83°45.36' 073° 26.0 NM to fld. 823/2W.

DME unusable:

100°-125° byd 25 NM blo 4,000'

**TIFFIN NDB (MHW)** 269 TII N41°05.68' W83°12.90' at fld. 5W. NOTAM FILE CLE. NDB unmonitored.

**DETROIT**

L-28J, 29A

IAP

## TOLEDO

**EUGENE F KRANZ TOLEDO EXPRESS** (TOL)(KTOL) P (ANG) 10 SW UTC-5(-4DT) N41°35.21'

W83°48.47'

684 B LRA ARFF Index—See Remarks NOTAM FILE TOL

**RWY 07-25:** H10600X150 (ASPH-GRVD) S-100, D-174, 2S-175, 2D-300, 2D/2D2-550 PCN 67 F/B/W/T HIRL CL

**RWY 07:** ALSF2. TDZL. RVR-TR Trees.

**RWY 25:** MALSR. PAPI(P4L)—GA 3.0° TCH 69'. RVR-TR Trees. 0.3% up.

**RWY 16-34:** H5599X150 (ASPH-GRVD) S-100, D-174, 2S-175,

2D-300 PCN 52 F/B/W/T MIRL

**RWY 16:** REIL. PAPI(P4L)—GA 3.0° TCH 48'. Trees.

**RWY 34:** REIL. PAPI(P4L)—GA 3.0° TCH 50'.

**RUNWAY DECLARED DISTANCE INFORMATION**

**RWY 07:** TORA-10599 TODA-10599 ASDA-10599 LDA-10599

**RWY 16:** TORA-5599 TODA-5599 ASDA-5599 LDA-5599

**RWY 25:** TORA-10599 TODA-10599 ASDA-10599 LDA-10599

**RWY 34:** TORA-5599 TODA-5599 ASDA-5599 LDA-5599

**ARRESTING GEAR/SYSTEM**

**RWY 07** BAK-14 BAK-12(B) (1500 FT).

BAK-14 BAK-12(B) (1050 FT). **RWY 25**

**SERVICE:** S4 FUEL 100LL, JET A, A++ OX 3 LGT SS-SR. Rwy 25

PAPI unusbl byd 8 degs right of cntrln. **MILITARY—FUEL:** A++ (MIL)

**AIRPORT REMARKS:** Attended continuously. Birds on and invof arpt. Fuel and svc avbl 1300-0500Z±. Class I, ARFF Index B.

48 hr PPR for unsked acr ops gtr than 10 pax seats — call amgr. Twy N3 & ramp btn Twy B9 & B13 not vsb fm tower. Cust: Sat-Sun req must be made bfr 2200Z± Fri — call 419-732-4446.

**MILITARY REMARKS:** ANG Afld OPS duty hrs 1145-2230Z± Mon-Thu, ocnl wkends, excludg hols. PPR— off bus, acft with wingspans gtr than 75 ft can exp prkg on Twy D or the south cargo ramp, ctc airfield ops DSN 580-4084/4036, C800-495-4250 extn 868-4084/868-4036 or 180.FW.Airfield.Management@US.AF.MIL. 180th Command Post H24 DSN 580-4035. All inbd tsnt acft ctc Command Post. Twy D int Twy D1, hvy acft use mnm pwr to rdc FOD on ANG ramp; for qns ctc Command Post or Airfield Ops on 338.15. Bird haz wildlife act durg migration; BASH Phase II in eff Mar-May & Aug-Oct. Nstd black/yellow eqpt tool box lctn painted on ANG Ramp. Airfield mgmt does not issue/store comsec; for comsec storage ctc Command Post DSN 580-4035.

**AIRPORT MANAGER:** 567-703-8631

**WEATHER DATA SOURCES:** ASOS (419) 865-6924 WSP.

**COMMUNICATIONS:** ATIS 118.75 UNICOM 122.95

Ⓡ **APP/DEP CON** 126.1 (360°-179°) 134.35 (180°-359°) 123.975

**TOWER** 118.1 **GND CON** 121.9 **CLNC DEL** 121.75

**AIRSPACE:** CLASS C svc ctc **APP CON.**

**RADIO AIDS TO NAVIGATION:** NOTAM FILE TOL.

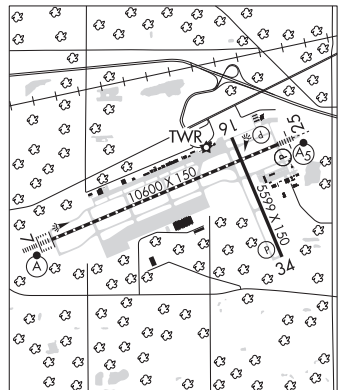
**TOPHR NDB (LOMW)** 219 TO N41°33.21' W83°55.27' 074° 5.5 NM to fld. 676/5W. NDB unmonitored.

**ILS** 109.7 I-TOL Rwy 07. Class IE. LOM TOPHR NDB. LOM unmonitored.

**ILS/DME** 108.7 I-BQE Chan 24 Rwy 25. Class IE.

ASR

**COMM/NAV/WEATHER REMARKS:** ATIS reception intrmt 270-320 degs, byd 35 NM.



**DETROIT**

H-10G, L-28J

IAP, AD