

RICE LAKE RGNL/CARL'S FLD (RPD)(KRPD) 5 SW UTC-6(-5DT) N45°25.21' W91°46.40' 1109 B NOTAM FILE RPD

GREEN BAY H-21, L-141 IAP

RWY 01-19: H6700X100 (ASPH) S-85, D-110 HIRL
RWY 01: MALS. PAPI(P2L)—GA 3.0° TCH 28'. Thld dspcd 200'. Trees. Rgt tfc.

RWY 19: REIL. PAPI(P4L)—GA 3.0° TCH 38'.

RWY 13-31: H3500X75 (ASPH) MIRL

RWY 13: REIL. PAPI(P2L)—GA 3.75° TCH 25'. Trees.

RWY 31: REIL. PAPI(P2L)—GA 3.5° TCH 40'. Trees. Rgt tfc.

SERVICE: S4 FUEL 100LL, JET A+ OX 1, 3 LGT HIRL Rwy 01-19 preset on low ints SS-SR; to increase ints and ACTIVATE REIL Rwy 19; PAPI Rwy 01 and Rwy 19; MALS Rwy 01—CTAF.

AIRPORT REMARKS: Attended Mon-Fri 1300-0200Z†, Sat 1400-2100Z†. Fuel: 100LL 24 hr self svc fuel avbl with credit card.

AIRPORT MANAGER: (715) 458-4400

WEATHER DATA SOURCES: AWOS-3 120.525 (715) 458-4481.

COMMUNICATIONS: CTAF/UNICOM 122.7

RCO 122.3 (GREEN BAY RADIO)

Ⓜ MINNEAPOLIS CENTER APP/DEP CON 125.3

CLEARANCE DELIVERY PHONE: For CD if una to ctc on FSS freq, ctc Minneapolis ARTCC at 651-463-5588.

RADIO AIDS TO NAVIGATION: NOTAM FILE EAU.

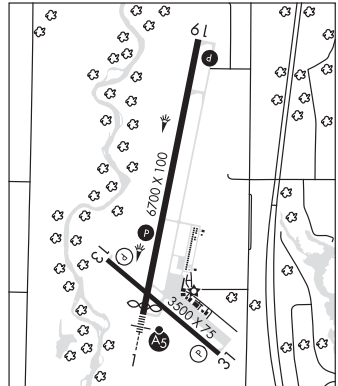
EAU CLAIRE (VL) (H) VORTACW 113.65 EAU Chan 83(Y) N44°53.86' W91°28.71' 334° 33.8 NM to fld. 904/4E.

VOR unusable:

- 021°-031° byd 40 NM blo 6,000'
- 021°-031° byd 73 NM
- 097°-108° byd 40 NM blo 4,000'
- 097°-108° byd 73 NM
- 109°-124° byd 40 NM
- 125°-135° byd 40 NM blo 4,700'
- 125°-135° byd 55 NM
- 136°-157° byd 40 NM
- 158°-168° byd 40 NM blo 3,500'
- 158°-168° byd 47 NM
- 169°-181° byd 40 NM blo 4,700'
- 169°-181° byd 64 NM
- 182°-245° byd 40 NM
- 246°-256° byd 40 NM blo 4,600'
- 246°-256° byd 50 NM
- 257°-280° byd 40 NM
- 281°-291° byd 40 NM blo 3,400'
- 281°-291° byd 47 NM
- 292°-335° byd 40 NM
- 336°-346° byd 40 NM blo 4,000'
- 336°-346° byd 49 NM blo 6,000'
- 336°-346° byd 64 NM
- 347°-020° byd 40 NM
- 134°-144° byd 14 NM blo 6,900'
- 210°-220° byd 23 NM
- 255°-265° byd 20 NM blo 5,000'

WICKR NDB (LOMW) 221 RP N45°19.08' W91°48.16' 010° 6.3 NM to fld. 1215/1E. NOTAM FILE RPD.

ILS 108.3 I-RPD Rwy 01. Class IT. LOM WICKR NDB.



RICHARD I BONG (See SUPERIOR on page 389)