

## PEORIA

**GENERAL DOWNING – PEORIA INTL** (PIA)(KPIA) P (ANG ARNG) 4 W UTC-6(-5DT) N40°39.85'

**CHICAGO**  
H-5D, L-27C  
IAP, AD

W89°41.60'

661 B LRA Class I, ARFF Index B NOTAM FILE PIA

**RWY 13-31:** H10104X150 (CONC-GRVD) S-100, D-175, 2S-175,  
2D-310 PCR 760 F/C/X/T HIRL

**RWY 13:** MALSR. PAPI(P4R)—GA 3.0° TCH 57'. RVR-R Thld dsplcd  
500'. Tree.

**RWY 31:** MALSR. RVR-T Tree.

**RWY 04-22:** H8004X150 (ASPH-GRVD) S-100, D-175, 2S-175,  
2D-300 PCR 800 F/C/X/T HIRL 0.3% up NE

**RWY 04:** MALSR. PAPI(P4R)—GA 3.0° TCH 54'. RVR-TR Tree.

**RWY 22:** PAPI(P4L)—GA 3.0° TCH 45'. Tree.

**RUNWAY DECLARED DISTANCE INFORMATION**

**RWY 04:** TORA-8004 TODA-8004 ASDA-7826 LDA-7826

**RWY 13:** TORA-10104 TODA-10104 ASDA-9604 LDA-9604

**RWY 22:** TORA-8004 TODA-8004 ASDA-8004 LDA-8004

**RWY 31:** TORA-10104 TODA-10104 ASDA-10104 LDA-10104

**SERVICE:** S4 **FUEL** 100LL, JET A, A++ **OX** 1, 2 **LGT** Rwy 22 PAPI  
unusbl byd 9° rgt of cntrln. **MILITARY—JASU** (A/M32A-86) 1(MD-3A)  
2(A/M32-95) **FUEL** A++(Mil) (NC-100LL, A) **FLUID PRESAIR LOX OIL**  
O-128(MIL)

**AIRPORT REMARKS:** Attended continuously. Birds on and in vof arpt. Portion  
of Twy A-5 not visible from twr due to a building. Lgtd P-line Rwy 04 apch.

**MILITARY REMARKS:** ANG OPS Call TORCH OPS 20 min prior to ldg.

**AIRPORT MANAGER:** 309-697-8272

**WEATHER DATA SOURCES:** ASOS (309) 697-3611 LLWAS.

**COMMUNICATIONS:** ATIS 126.1 **UNICOM** 122.95

**PEORIA RCO** 122.5 (KANKAKEE RADIO)

Ⓡ **SAINT LOUIS APP/DEP CON** 125.8

**TOWER** 124.0 **GND CON** 121.85 **CLNC DEL** 124.675

**AIRSPACE:** CLASS C svc ctc **APP CON.**

**RADIO AIDS TO NAVIGATION:** NOTAM FILE PIA.

**PEORIA (L) VORTACW** 115.2 PIA Chan 99 N40°40.80' W89°47.57' 098° 4.6 NM to fld. 731/4E.

VOR portion unusable:

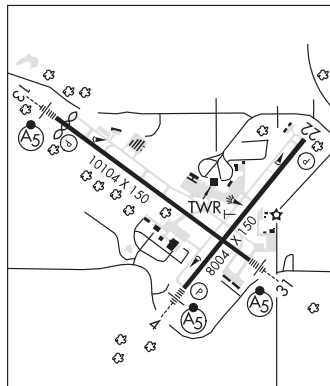
009°-019° byd 25 NM blo 8,000'

**TUNGG NDB (MHW/LOM)** 356 PI' N40°36.34' W89°35.59' 310° 5.8 NM to fld. 602/2W.

**ILS/DME** 110.55 I-RNX Chan 42(Y) Rwy 04. Class IIE.

**ILS** 109.9 I-GZX Rwy 13. Class IA.

**ILS** 109.9 I-PIA Rwy 31. Class IA. LOM TUNGG NDB.



**MOUNT HAWLEY AUXILIARY** (3MY) 7 N UTC-6(-5DT) N40°47.75' W89°36.81'

**CHICAGO**  
L-27C  
IAP

793 B NOTAM FILE IKK

**RWY 18-36:** H4001X60 (ASPH) S-20 MIRL 0.5% up N

**RWY 36:** REIL. VASI(V4L)—GA 3.5° TCH 32'.

**SERVICE:** S4 **FUEL** 100LL, JET A **OX** 3, 4 **LGT** ACTIVATE REIL and  
VASI Rwy 36—CTAF, MIRL Rwy 18-36 operates SS-SR.

**AIRPORT REMARKS:** Attended dawn-dusk. Fuel 24 hr 100LL and Jet A avbl  
with credit card.

**AIRPORT MANAGER:** 309-697-8272

**COMMUNICATIONS:** CTAF/UNICOM 122.7

Ⓡ **SAINT LOUIS APP/DEP CON** 125.8

**CLNC DEL** 121.6

**RADIO AIDS TO NAVIGATION:** NOTAM FILE PIA.

**PEORIA (L) VORTACW** 115.2 PIA Chan 99 N40°40.80'

W89°47.57' 046° 10.7 NM to fld. 731/4E.

VOR portion unusable:

009°-019° byd 25 NM blo 8,000'

