

**NORTH PLATTE RGNL/LEE BIRD FLD** (LBF)(KLBF) 3 E UTC-6(-5DT) N41°07.57' W100°41.02'

OMAHA  
H-5B, L-10H, 12G  
IAP, AD

2777 B TPA—See Remarks ARFF Index—See Remarks NOTAM FILE LBF

**RWY 12-30:** H8001X150 (CONC-GRVD) S-75, D-110, 2S-139,

2D-190 PCN 33 R/D/W/T HIRL

**RWY 12:** PAPI(P4L)—GA 3.0° TCH 55'.

**RWY 30:** MALSR. PAPI(P4L)—GA 3.0° TCH 55'.

**RWY 17-35:** H4436X100 (CONC) S-28, D-48, 2D-86

PCN 22 R/B/W/T MIRL

**RWY 17:** Road.

**RWY 35:** REIL. VASI(V4L)—GA 3.0° TCH 36'. Thld dsplcd 301'. Tree.

**RUNWAY DECLARED DISTANCE INFORMATION**

**RWY 12:** TORA-8001 TODA-8001 ASDA-8001 LDA-8001

**RWY 17:** TORA-4436 TODA-4436 ASDA-4135 LDA-4135

**RWY 30:** TORA-8001 TODA-8001 ASDA-8001 LDA-8001

**RWY 35:** TORA-4436 TODA-4436 ASDA-4436 LDA-4135

**SERVICE:** S4 FUEL 100LL, JET A OX2, 3, 4 LGT ACTIVATE HIRL Rwy 12-30; MIRL Rwy 17-35; PAPI Rwy 12 and Rwy 30; VASI Rwy 35; MALSR Rwy 30 & REIL Rwy 35—CTAF.

**AIRPORT REMARKS:** Attended 1200-0500Z±. Waterfowl on and in/vf of the arpt. Class I, ARFF Index A. PPR 24 hrs for unscheduled air carrier ops with more than 30 passenger seats call arpt manager 308-530-6948, ARFF Index B equipment provided. All Category D acft (with speeds of 141-166 knots) operating on Rwy 12-30 must maintain a TPA of 1,500' when in the tfc pat.

**AIRPORT MANAGER:** (308) 530-0607

**WEATHER DATA SOURCES:** ASOS 118.425 (308) 534-1617.

**COMMUNICATIONS:** CTAF/UNICOM 123.0

LEE BIRD RCO 122.5 (COLUMBUS RADIO)

Ⓡ DENVER CENTER APP/DEP CON 132.7

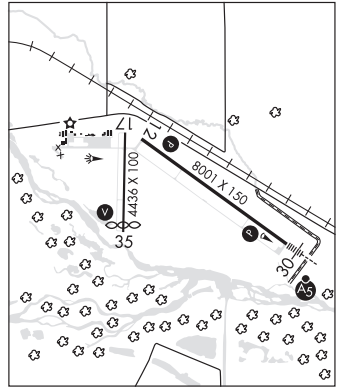
**CLEARANCE DELIVERY PHONE:** For CD ctc Denver ARTCC on freq. If una, ctc FSS on freq via rco. If una, ctc Denver ARTCC at 303-651-4257.

**AIRSPACE:** CLASS E.

**RADIO AIDS TO NAVIGATION:** NOTAM FILE LBF.

(L) (L) VORW/DME 117.4 LBF Chan 121 N41°02.92' W100°44.83' 021° 5.5 NM to fld. 3069/11E.

ILS 111.5 I-LBF Rwy 30. Class IC. LOM unmonitored.



**O'NEILL**

**THE O'NEILL MUNI-JOHN L BAKER FLD** (ONL)(KONL) 2 NW UTC-6(-5DT) N42°28.16' W98°41.27' 2034 B NOTAM FILE ONL

OMAHA  
L-12H  
IAP

**RWY 13-31:** H4408X75 (CONC) S-30 MIRL

**RWY 13:** REIL. PAPI(P2L)—GA 3.0° TCH 40'.

**RWY 31:** REIL. PAPI(P2L)—GA 3.0° TCH 40'.

**RWY 04-22:** H3200X60 (CONC)

**RWY 22:** Tree.

**SERVICE:** S4 FUEL 100LL, JET A+ LGT ACTIVATE REIL Rwy 13 and Rwy 31; PAPI Rwy 13 and Rwy 31; MIRL Rwy 13-31—CTAF.

**AIRPORT REMARKS:** Attended continuously. Watch for large flocks of waterfowl during migration seasons (Feb & Oct). For aft hrs svc call 402-336-6582.

**AIRPORT MANAGER:** 402-336-6582

**WEATHER DATA SOURCES:** AWOS-3 121.125 (402) 336-4834.

**COMMUNICATIONS:** CTAF/UNICOM 122.8

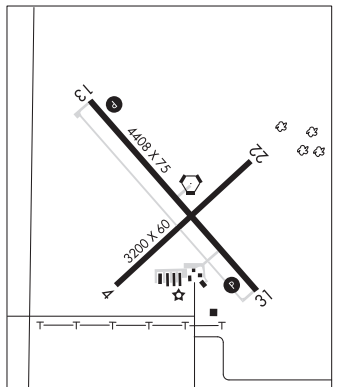
O'NEILL RCO 122.6 (COLUMBUS RADIO)

Ⓡ MINNEAPOLIS CENTER APP/DEP CON 128.0

**CLEARANCE DELIVERY PHONE:** For CD if una to ctc on FSS freq, ctc Minneapolis ARTCC at 651-463-5588.

**RADIO AIDS TO NAVIGATION:** NOTAM FILE ONL.

O'NEILL (H) (H) VORTACW 113.9 ONL Chan 86 N42°28.23' W98°41.22' at fld. 2028/10E.



**O'NEILL** N42°28.23' W98°41.22' NOTAM FILE ONL.  
(H) (H) VORTACW 113.9 ONL Chan 86 at The O'Neill Muni-John L Baker Fld. 2028/10E.  
RCO 122.6 (COLUMBUS RADIO)

OMAHA  
H-5B, L-12H