

## HYANNIS

**CAPE COD GATEWAY** (HYA)(KHYA) 1 N UTC-5(-4DT) N41°40.16' W70°16.82'

NEW YORK

54 B LRA ARFF Index—See Remarks NOTAM FILE HYA MON Airport

H-10J, 11D, 12K, L-33D

**RWY 06-24:** H5425X150 (ASPH-GRVD) S-30, D-108

IAP, AD

PCR 384 F/A/X/T HIRL

**RWY 06:** REIL. PAPI(P4L)—GA 3.0° TCH 37'. RVR-R Thld dsplcd 406'. Tree.

**RWY 24:** MALSF. PAPI(P4L)—GA 3.0° TCH 50'. RVR-T Railroad.

**RWY 15-33:** H5255X150 (ASPH-GRVD) S-30, D-108

PCR 355 F/A/X/T HIRL

**RWY 15:** MALSR. RVR-T P-line.

**RWY 33:** PAPI(P4L)—GA 3.0° TCH 53'. RVR-R Thld dsplcd 150'.

**LAND AND HOLD—SHORT OPERATIONS**

LDG RWY	HOLD—SHORT POINT	AVBL LDG DIST
RWY 15	06-24	4150
RWY 24	15-33	4650

**RUNWAY DECLARED DISTANCE INFORMATION**

RWY 06:	TORA-5425	TODA-5425	ASDA-5425	LDA-5019
<b>RWY 15:</b>	TORA-5255	TODA-5255	ASDA-5255	LDA-5255
<b>RWY 24:</b>	TORA-5425	TODA-5425	ASDA-5425	LDA-5425
<b>RWY 33:</b>	TORA-5255	TODA-5255	ASDA-5255	LDA-5105

**ARRESTING GEAR/SYSTEM**

**RWY 24:** EMAS

**SERVICE:** S4 **FUEL** 100LL, JET A **LGT** Actvt MALSR Rwy 15; MALSF Rwy 24; HIRL Rwy 06-24 and 15-33—CTAF.

**NOISE:** Arpt has noise abatement ctc arpt manager 508-778-7765. Tgl opns prohibited btn 0200-1059Z PPR by AMGR.

**AIRPORT REMARKS:** Attended continuously. Birds, coyotes on and in/ov arpt. AVGAS unavailable btn 0000Z and 1100Z daily.

Call Griffin aft hrs 508-367-2140. Clsd to unskd acr ops with more than 9 pax seats 0500-1100Z excp 1 hr PPR

amgr 508-778-7770. Be aware of high-spd mil jet & hvy hel tfc vcntry of Joint Base Cape Cod. Do not confuse Joint

Base Cape Cod, 10 NM W with Cape Cod Gateway. Ant on tank 4,600' SE elev 208'; standpipe 7,050' N 236'; obstn

lgt'd. Class I, ARFF Index A. ARFF Index B svcs prvdd btn 1100-0259Z dly. ARFF Index A svcs prvdd durg otr times.

For Index B svcs btn 0300-1059Z, 1 hr 30 min PPR at 508-778-7770. Twy B clsd to acft with wingspan grt than

118'. Twy B btn Twy D and Rwy 06-24 clsd to acft with wingspan grt than 78'. Twy B from Rwy 33 to east ramp has

soft shoulders and marked. Ldg fee for all acft over 6000 lbs.

**AIRPORT MANAGER:** 508-775-2020

**WEATHER DATA SOURCES:** ASOS (508) 862-2601 LAWRS.

**COMMUNICATIONS:** CTAF 119.5 ATIS 123.8 (508) 778-1143 UNICOM 122.95

® BOSTON CONSOLIDATED TRACON APP/DEP CON 118.2

HYANNIS TOWER 119.5 (1100-0300Z) GND CON 118.45 CLNC DEL 125.15 120.125 (when twr clsd)

**AIRSPACE:** CLASS D svc 1100-0300Z; other times CLASS G.

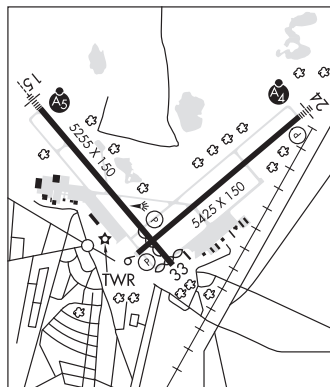
**RADIO AIDS TO NAVIGATION:** NOTAM FILE MVY.

MARTHAS VINEYARD (L) (L) VORW/DME 114.5 MVY Chan 92 N41°23.77' W70°36.76' 057° 22.2 NM to fld.  
62/15W.

ILS/DME 108.95 I-BCU Chan 26(Y) Rwy 15. Class IB. Unmonitored when ATCT clsd.

ILS/DME 109.15 I-HYA Chan 28(Y) Rwy 24. Class IT. Unmonitored when ATCT clsd. Autopilot cpd apchs NA blw  
700' MSL.

**COMM/NAV/WEATHER REMARKS:** Emerg frequency 121.5 not avbl at twr. All tsnt and GA pilots must ctc arpt ops on freq 122.95  
prior to eng shtdn for airfield escort btn 0300-1059Z.



**KATAMA AIRPARK** (See EDGARTOWN on page 122)

**LAURENCE G HANSCOM FLD** (See BEDFORD on page 116)