

**BROADWAY** N40°47.91' W74°49.31' NOTAM FILE MIV.  
(L) (L) **VOR/DME** 114.2 BWZ Chan 89 157° 12.4 NM to Somerset. 1050/11W.

NEW YORK  
H-101, L-33A, 34H

VOR portion unusable:  
125°-180° byd 15 NM blo 5,000'  
125°-240° blo 3,000'  
180°-210° byd 15 NM  
210°-235° byd 15 NM blo 5,000'  
DME portion unusable:  
297°-307° byd 20 NM blo 6,000'  
297°-307° byd 32 NM blo 8,000'

**BUCKS** (See BRIDGETON on page 159)

## CALDWELL

**ESSEX CO** (CDW)(KCDW) 2 N UTC-5(-4DT) N40°52.51' W74°16.88'

NEW YORK  
COPTER  
L-33A, 34H  
IAP, AD

172 B TPA—See Remarks NOTAM FILE CDW

**RWY 04-22:** H4552X80 (ASPH-GRVD) S-30 HIRL

**RWY 04:** Thld dsplcd 375'. Tree.

**RWY 22:** REIL. PAPI(P4R)—GA 3.0° TCH 42'. Thld dsplcd 135'.

Trees. Rgt tfc.

**RWY 10-28:** H3719X75 (ASPH) S-30 MIRL

**RWY 10:** Thld dsplcd 344'. Tree.

**RWY 28:** Thld dsplcd 550'. Tree. Rgt tfc.

### RUNWAY DECLARED DISTANCE INFORMATION

**RWY 04:** TORA-4552 TODA-4552 ASDA-4351 LDA-3977

**RWY 10:** TORA-3719 TODA-3719 ASDA-3519 LDA-2822

**RWY 22:** TORA-4552 TODA-4552 ASDA-4436 LDA-4042

**RWY 28:** TORA-3719 TODA-3719 ASDA-3438 LDA-2822

**SERVICE:** S4 FUEL 100LL, JET A OX4 LGT When ATCT clsd, PAPI

Rwy 22; HIRL 04-22; MIRL Rwy 10-28 opr consly. HIRL Rwy 04-22; MIRL Rwy 10-28 preset to low intst. To incrs intst and actvt REIL Rwy 22—CTAF. Rwy 22 PAPI unusable byd 5° right of centerline due to obstruction.

**NOISE:** Non-standard traffic patterns for Rwy 04 prohibited due to noise sensitive area southwest of the airport.

**AIRPORT REMARKS:** Attended 1200-0400Z†. Local ops suspended

Mon-Sat 0400-1200Z† and 0400Z† Sat-1500Z† Sun. Deer and birds on and invof arpt. Touch and go ldrs ltd to based acct only. TPA

for large and turbojet acct 1699(1527), light acct 1199(1027). Fixed wing VFR acct dep: Rwy 04-fly rwy hdg for 1 mi, then turn crosswind if remaining in the tfc pat. If departing the tfc pat, cont on rwy hdg til reaching tfc pat alt. Fixed wing VFR acct dep: Rwy 10-fly hdg 080 deg at rwy dep end. Upon reaching 900 ft MSL, turn crosswind if remaining in the tfc pat; if departing the tfc pat, cont on hdg 080 deg til reaching tfc pat alt. Fixed wing VFR acct dep: Rwy 22 fly rwy hdg til reaching 900 ft MSL then turn crosswind if remaining in the tfc pat. If departing the tfc pat, cont on rwy hdg til reaching tfc pat alt. Fixed wing VFR acct dep: Rwy 28 fly rwy hdg for 1 mi then turn crosswind if remaining in the tfc pat. If departing the tfc pat, cont on rwy hdg til reaching tfc pat alt. Rotocraft: If psbl, cross the arpt bdry at or abv 700 ft MSL. Pilots be alert—the Morristown ILS and GPS Rwy 23 approaches transit Essex Co Arpt Class D asp. Tfc passes two mi west of the arpt descending through 2000 ft MSL. Eng run-ups on Twy N at AER 28 shd be conducted to lmt efct to acct parked on RN Ramp. Ldg fee for all tran acct. NOTE: See Special Notices—Arrival Alert.

**AIRPORT MANAGER:** 973-227-4567

**WEATHER DATA SOURCES:** ASOS 135.5 (973) 575-4417.

**COMMUNICATIONS:** CTAF 119.8 ATIS 135.5 UNICOM 122.95

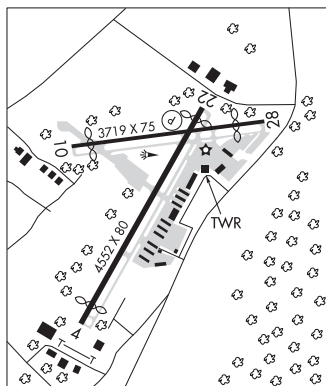
Ⓡ NEWARK APP CON 127.6

Ⓡ CALDWELL TOWER 119.8 (1200-0400Z)† GND CON 121.9 CLNC DEL 121.1

Ⓡ NEWARK DEP CON 119.2

**CLEARANCE DELIVERY PHONE:** For CD when ATCT is clsd ctc Newark Apch at 800-645-3206.

**AIRSPACE:** CLASS D svc 1200-0400Z†; other times CLASS G.



CONTINUED ON NEXT PAGE

## CONTINUED FROM PRECEDING PAGE

RADIO AIDS TO NAVIGATION: NOTAM FILE TEB.

TETERBORO (T) (T) VORW/DME 108.4 TEB Chan 21 N40°50.92' W74°03.73' 290° 10.1 NM to fld. 8/11W.

DME unusable:

060°-080° byd 22 NM blo 2,500'

081°-120° blo 4,000'

121°-180° blo 3,000'

236°-246°

VOR unusable:

081°-120° blo 4,000'

121°-180° blo 3,000'

236°-246°

LOC 109.35 I-CDW Rwy 22.

COMM/NAV/WEATHER REMARKS: Emerg frequency 121.5 not avbl at twr.

CAPE MAY CO (See WILDWOOD on page 181)

CEDAR LAKE N39°32.26' W74°58.03' NOTAM FILE MIV.

WASHINGTON

(L) (L) VORW/DME 115.2 VCN Chan 99 267° 3.8 NM to Kroelinger. 120/10W.

H-101, L-34G, A

CENTRAL JERSEY RGNL (See MANVILLE on page 166)

COLTS NECK N40°18.70' W74°09.58' NOTAM FILE MIV.

NEW YORK

(L) (L) VORW/DME 115.4 COL Chan 101 179° 7.7 NM to Monmouth Exec. 129/11W.

H-101, L-34H

VOR portion unusable:

031°-179° byd 15 NM blo 6,000'

230°-240° byd 18 NM

241°-329° byd 15 NM blo 3,000'

351°-030° byd 30 NM blo 3,000'

Byd 30 NM blo 6,000'

DME portion unusable:

230°-240° byd 18 NM

RCO 122.3 (MILLVILLE RADIO)

COYLE N39°49.04' W74°25.90' NOTAM FILE MIV.

WASHINGTON

(H) (H) VORTACW 113.4 CYN Chan 81 054° 9.1 NM to Ocean Co. 203/10W.

H-101, L-34G

VOR unusable:

044°-054° blo 3,800'

CROSS KEYS (L7N) 1 S UTC-5(-4DT) N39°42.33' W75°01.98'

WASHINGTON

162 B TPA-1000(838) NOTAM FILE MIV

L-34G, A

RWY 09-27: H3500X50 (ASPH) S-13 RWY LGTS(NSTD) 0.7% up E

IAP

RWY 09: Trees. Rgt tfc.

RWY 27: Thld dspcd 200'. Tree.

SERVICE: FUEL 100LL, JET A LGT Rotating bcn opr SS-SR. Rwy 09-27

LIRL lgt spacing NSTD.

AIRPORT REMARKS: Attended 1300-2200Z. Arpt unattended

Thanksgiving, Christmas, New Year's Day and Easter. Parachute Jumping. Due to parachute drop zone on north side of arpt, all tfc is to remain south of Rwy 09-27. Deer and birds on and invof arpt. Rwy 27 dspcd thld marked with lgts.

AIRPORT MANAGER: 856-629-3033

COMMUNICATIONS: CTAF/UNICOM 122.8

② PHILADELPHIA APP/DEP CON 127.35 133.875

CLEARANCE DELIVERY PHONE: For CD etc Philadelphia Apch at 800-354-9884.

RADIO AIDS TO NAVIGATION: NOTAM FILE MIV.

WOODSTOWN (L) (L) VORTACW 112.8 OOD Chan 75 N39°38.16'

W75°18.18' 082° 13.2 NM to fld. 147/10W.

VOR unusable:

039°-041° byd 20 NM blo 2,500'

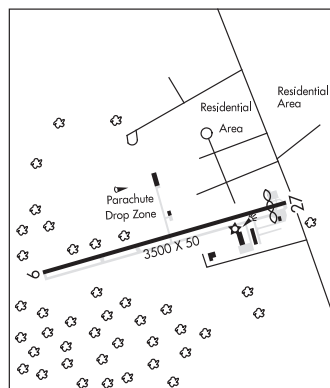
090°-105°

159°-190°

DME unusable:

045°-065° byd 20 NM blo 2,500'

090°-105°



EAGLES NEST (See WEST CREEK on page 180)