

KNOX RIDGE (See WINIFRED on page 150)

L M CLAYTON (See WOLF POINT on page 152)

LAKESIDE N48°00.68' W114°21.88'
RC0 122.5 (GREAT FALLS RUDGE)

GREAT FALLS
L-13B

LAUREL MUNI (6S8) 2 N UTC-7(-6DT) N45°42.31' W108°45.65'

3543 B NOTAM FILE GTF

RWY 04-22: H5199X75 (ASPH) S-12.5 MIRL 0.6% up SW

RWY 04: PAPI(P2L)—GA 3.0° TCH 34'.

RWY 22: PAPI(P2L)—GA 3.0° TCH 41'.

RWY 14-32: H3002X60 (ASPH) S-12.5 MIRL 2.0% up NW

RWY 14: PAPI(P2L)—GA 4.0° TCH 21'.

RWY 32: PAPI(P2L)—GA 3.0° TCH 21'.

RWY 09-27: 1100X60 (TURF) 2.2% up W

SERVICE: S2 **FUEL** 100LL, **JET A** **LGT** ACTVT PAPI RWY 04 & 22 & 14 & 32; MIRL RWY 04-22 & RWY 14-32—CTAF.

AIRPORT REMARKS: Attended Mon-Fri 1500-0000Z†, Sat-Sun intermittently. Parachute Jumping. Ultralights on and invof arpt. Numerous deer and antelope on and invof rwy. Intermittent snow removal, be alert during winter months. Rwy 09-27 not maintained during winter. Rwy 09-27 marker cones full rwy length.

AIRPORT MANAGER: 406-628-0172

WEATHER DATA SOURCES: AWOS-2 135.05 (406) 628-9867.

COMMUNICATIONS: CTAF/AUNICOM 123.05

® **BILLINGS APP/DEP CON** 119.2 120.5

CLEARANCE DELIVERY PHONE: For CD ctc Billings Apch at 406-255-2798

RADIO AIDS TO NAVIGATION: NOTAM FILE BIL.

BILLINGS (VH) (H) VORTACW 114.5 BIL Chan 92 N45°48.51' W108°37.48' 209° 8.4 NM to fld. 3811/14E.

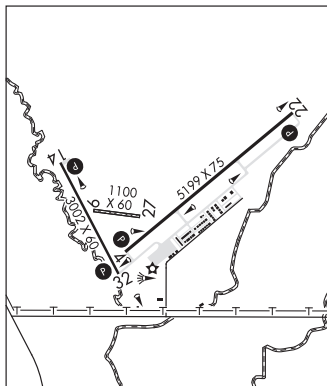
VOR unusable:

146°-154° byd 40 NM

155°-165° byd 40 NM blo 11,000'

155°-165° byd 49 NM blo 18,000'

166°-173° byd 40 NM



BILLINGS
H-1E, L-13D
IAP

LAVINA (8ØS) 2 NW UTC-7(-6DT) N46°18.44' W108°57.29'

3512 NOTAM FILE GTF

RWY 07-25: 3460X100 (TURF) 0.7% up W

AIRPORT REMARKS: Unattended. No snow removal. Rwy 07-25 very muddy when wet; few gopher holes. Rwy 07-25 marked with cones full rwy length. Cell twr 0.5 mi ESE of arpt.

AIRPORT MANAGER: 406-444-2506

COMMUNICATIONS: CTAF 122.9

CLEARANCE DELIVERY PHONE: For CD ctc Billings Apch at 406-255-2798

BILLINGS

LETT COULEE (See WINIFRED on page 150)