

SAN MARCOS RGNL (HYI)(KHYI) 31 S UTC-6(-5DT) N29°53.57' W97°51.78'

SAN ANTONIO

595 B NOTAM FILE HYI

H-7C, L-19C, 21A

RWY 08-26: H6330X100 (ASPH) S-80 MIRL

IAP, AD

RWY 08: Fence.

RWY 26: Crops.

RWY 13-31: H5601X100 (ASPH) S-60 MIRL 0.4% up NW

RWY 13: MALS. PAPI(P2L)—GA 3.0° TCH 57'.

RWY 31: PAPI(P2L)—GA 3.0° TCH 60'. Trees.

RWY 17-35: H5214X100 (ASPH) S-20 MIRL 0.4% up N

RWY 17: PAPI(P2L)—GA 3.0° TCH 55'.

SERVICE: S5 FUEL 100LL, JET A OX 2, 4 LGT ACTVT MALS 13;

MIRL Rwy 08-26, 13-31 and 17-35 preset low intst; to incr

intst—CTAF. PAPI Rwy 13, 31, 17 opr consly.

AIRPORT REMARKS: Attended 1200-0300Z†. For aft hrs svc

800-229-2379. Birds and wildlife on and invof arpt. 100LL self svc;

100LL and Jet A avbl full serve. Aprn all ireg sfc.

AIRPORT MANAGER: 512-216-6039

WEATHER DATA SOURCES: AWOS-3PT (512) 353-8005

COMMUNICATIONS: CTAF 126.825 ATIS 120.825 (512-353-8005)

(1300-0300Z†)

Ⓡ AUSTIN APP/DEP CON 119.0

TOWER 126.825 (1300-0300Z†)

GND CON/CLNC DEL 120.125 CLNC DEL 121.35 (When twr clsd)

CLEARANCE DELIVERY PHONE: For CD ctc Austin Apch at 512-369-7865.

AIRSPACE: CLASS D svc 1300-0300Z† eff 01 Apr 2021; other times CLASS E.

RADIO AIDS TO NAVIGATION: NOTAM FILE AUS.

CENTEX (VH) (H) VORTACW 112.8 CWK Chan 75 N30°22.71' W97°31.79' 205° 33.9 NM to fld. 593/6E.

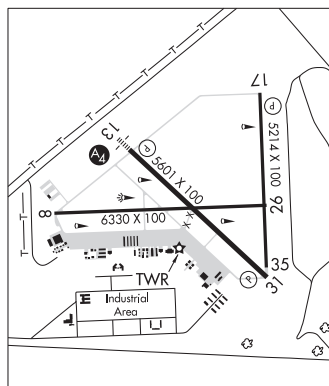
VOR unusable:

180°-190° byd 40 NM

200°-210° byd 40 NM

GARYS NDB (LOMW) 272 RU N29°57.52' W97°56.94' 124° 6.0 NM to fld. 819/7E. NOTAM FILE HYI.

ILS 108.7 I-RUM Rwy 13. Class IT. LOM GARYS NDB. ILS and LOM unmonitored. LOC unusable byd 30° left of course.



AVENGER FLD (See SWEETWATER on page 432)

BAILES (See ANGLETON on page 250)

BALLINGER

BRUCE FLD (E30) 5 SW UTC-6(-5DT) N31°40.47' W99°58.62'

SAN ANTONIO

1739 B NOTAM FILE SJT

L-19B

RWY 17-35: H3909X60 (ASPH) S-20 MIRL

IAP

RWY 17: PAPI(P2L)—GA 3.0° TCH 40'. Road.

SERVICE: FUEL 100LL LGT Airfield lftg not mntnd. Nmrs lgts OTS.

AIRPORT REMARKS: Unattended. Deer on and invof arpt. For fuel call

325-365-3511. Cash or check only. Rwy 17-35 vegetation growing

thru pavement.

AIRPORT MANAGER: 325-365-3591

COMMUNICATIONS: CTAF 122.9

Ⓡ SAN ANGELO APP/DEP CON 125.35 (1200-0300Z†)

Ⓡ FORT WORTH CENTER APP/DEP CON 126.15 (0300-1200Z†)

CLEARANCE DELIVERY PHONE: For CD ctc San Angelo Apch at

432-563-2123. When Apch clsd ctc Fort Worth ARTCC at

817-858-7584.

RADIO AIDS TO NAVIGATION: NOTAM FILE SJT.

SAN ANGELO (VH) (H) VORTACW 115.1 SJT Chan 98 N31°22.50'

W100°27.29' 044° 30.4 NM to fld. 1886/10E.

VOR unusable:

111°-190° byd 40 NM

120°-178° byd 24 NM blo 4,500'

191°-201° byd 49 NM

202°-267° byd 40 NM

268°-289° byd 7 NM

290°-314° byd 46 NM

315°-352° byd 40 NM

TACAN AZIMUTH unusable:

120°-178° byd 18 NM

