

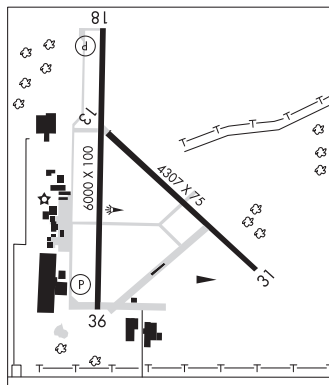
GAINES CO (See SEMINOLE on page 422)**GAINESVILLE MUNI** (GLE)(KGLE) 3 W UTC-6(-5DT) N33°39.13' W97°11.84'**DALLAS-FT WORTH**

846 B NOTAM FILE GLE

H-6H, L-17C, A

RWY 18-36: H6000X100 (ASPH) S-30, D-50 MIRL 0.9% up N

IAP, AD

RWY 18: REIL. PAPI(P2R)—GA 3.0° TCH 45'. Trees.**RWY 36:** REIL. PAPI(P2L)—GA 3.0° TCH 45'. Trees.**RWY 13-31:** H4307X75 (ASPH) S-15 0.8% up NW**RWY 13:** Trees.**RWY 31:** Trees.**SERVICE:** S4 FUEL 100LL, JET A+ LGT Dusk-Dawn. MIRL Rwy 18-36 preset low instst; to incr instst ACTVT—CTAF. PAPI Rwys 18 and 36 opr consly.**AIRPORT REMARKS:** Attended 1400-2300Z±. 100LL self-serve and full serve. Rwy 13-31 has extsv cracking. Rwy 13 has aim points. Rwy 31 has aim points. Rwy 13 markings faded. Rwy 31 markings faded. Hel skid ldg prohibited on all paved sfcs.**AIRPORT MANAGER:** 940-668-4565**WEATHER DATA SOURCES:** AWOS-3 118.375 (940) 612-3549.**COMMUNICATIONS:** CTAF/UNICOM 123.0Ⓡ **FORT WORTH CENTER APP/DEP CON** 124.75**CLEARANCE DELIVERY PHONE:** For CD ctc Fort Worth ARTCC at 817-858-7584.**RADIO AIDS TO NAVIGATION:** NOTAM FILE FTW.**BOWIE (H) (H) VORTACW** 117.15 UKW Chan 118(Y) N33°32.15' W97°49.28' 071° 32.0 NM to fld. 1102/6E.**GALVESTON****SHOLES INTL AT GALVESTON** (GLS)(KGLS) 3 SW UTC-6(-5DT) N29°15.92'**HOUSTON**

W94°51.63'

6 B LRA NOTAM FILE GLS MON Airport

COPTER

RWY 18-36: H6001X150 (CONC) S-74, D-92, 2D-162 MIRL

H-7C, L-19E, 21A, 60MW

RWY 18: REIL. PAPI(P4L)—GA 3.0° TCH 44'.**RWY 36:** REIL. PAPI(P4L)—GA 3.0° TCH 45'. Bldg.**RWY 14-32:** H6000X150 (ASPH-CONC) S-90, D-115, 2D-192 HIRL

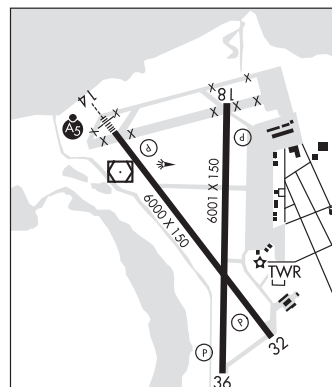
IAP, AD

RWY 14: MALSR. PAPI(P4L)—GA 3.0° TCH 52'.**RWY 32:** REIL. PAPI(P4L)—GA 3.0° TCH 46'. Bldg.**RUNWAY DECLARED DISTANCE INFORMATION****RWY 14:** TORA-6000 TODA-6000 ASDA-6000 LDA-6000**RWY 18:** TORA-6001 TODA-6001 ASDA-6001 LDA-6001**RWY 32:** TORA-6000 TODA-6000 ASDA-6000 LDA-6000**RWY 36:** TORA-6001 TODA-6001 ASDA-6001 LDA-6001**SERVICE:** S4 FUEL 100LL, JET A LGT HIRL Rwy 14-32, MIRL Rwy 18-36 preset med instst. When ATCT clsd ACTVT MALSR Rwy 14—CTAF.**AIRPORT REMARKS:** Attended 1200-0200Z±. Flocks of birds invof arpt blw 200 ft AGL. Hcls oprg on and invof arpt. 100LL aft hrs svc 409-750-0195. 178 ft lgtd bldg 2000 ft NE of Rwy 18 thr. PAEW adj rwys and twys. Rwy 14-32 first 1,300' NW end is conc. Flight Notification Service (ADCUS) available.**AIRPORT MANAGER:** 409-797-3590**WEATHER DATA SOURCES:** ASOS 123.950 (409) 740-5483.**COMMUNICATIONS:** CTAF 120.575 UNICOM 123.05**GALVESTON RCO** 122.2 (MONTGOMERY COUNTY RADIO)Ⓡ **HOUSTON APP/DEP CON** 134.45**TOWER** 120.575 (1200-0000Z±) **GND CON** 118.625 **CLNC DEL** 135.35**CLEARANCE DELIVERY PHONE:** For CD when ATCT is clsd ctc Houston Apmh at 281-443-5844 to cnl IFR at 281-443-5888.**AIRSPACE:** CLASS D svc 1200-0000Z±; other times CLASS E.**RADIO AIDS TO NAVIGATION:** NOTAM FILE GLS.**(VH) (DH) VORV/DME** 113.0 VUH Chan 77 N29°16.16' W94°52.06' at fld. 4/6E.

VOR unusable:

285°-295° byd 35 NM blo 2,500'

ILS 111.7 I-GLS Rwy 14.

**GALVESTON 209B** GVV N29°07.82' W94°32.79'/121**HOUSTON, HOUSTON TAC**

AWOS-3 118.25 (832) 917-1465

L-19E, L-21A, 60MW