

VERNON

WILBARGER CO (F05) 4 N UTC-6(-5DT) N34°13.54' W99°17.03'

DALLAS-FT WORTH  
H-6H, L-17B  
IAP

1265 B NOTAM FILE F05

RWY 02-20: H5099X100 (ASPH) S-30, D-40, 2D-60 MIRL

RWY 02: Road.

RWY 20: VASI(V4L)—GA 3.0° TCH 25'. Road.

RWY 16-34: H4304X80 (ASPH) S-10 MIRL

RWY 16: Road.

SERVICE: FUEL 100LL, JET A+

AIRPORT REMARKS: Attended Mon-Sat 1400-2300Z†. Seasonal extsv aerial ag ops. 100LL self-serve. 100LL, Jet A+ full serve; aft hrs svc call 940-839-6365. Rwy 02-20 grass encroaching 13 ft each side.

AIRPORT MANAGER: 940-552-2182

WEATHER DATA SOURCES: AWOS-3 118.525 (940) 552-8600.

COMMUNICATIONS: CTAF/UNICOM 122.8

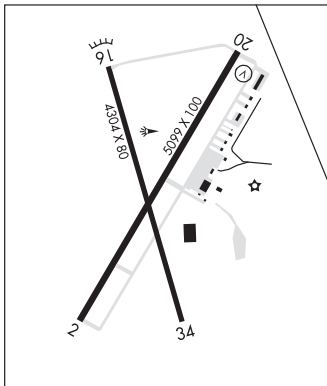
Ⓡ ALTUS APP/DEP CON 125.1 (Mon-Fri 1500-0830Z† clsd weekends and holidays)

Ⓡ FORT WORTH CENTER APP/DEP CON 128.4 133.5 (Mon-Fri 0830-1500Z†, 24 hrs weekends and holidays)

CLEARANCE DELIVERY PHONE: For CD ctc Fort Worth ARTCC at 817-858-7584.

RADIO AIDS TO NAVIGATION: NOTAM FILE SPS.

WICHITA FALLS (H) (H) VORTACW 112.7 SPS Chan 74 N33°59.24' W98°35.61' 283° 37.2 NM to fld. 1133/10E.



VICTORIA RGNL (VCT)(KVCT) 5 NE UTC-6(-5DT) N28°51.25' W96°55.12'

HOUSTON  
H-7C, L-201, 21A  
IAP, AD

115 B TPA—See Remarks Class I, ARFF Index A NOTAM FILE VCT

RWY 13-31: H9111X150 (ASPH-GRVD) S-28, D-49, 2D-87 HIRL

RWY 13: MALSR.

RWY 31: PAPI(P4L)—GA 3.0° TCH 55'. Rgt tfc.

RWY 18-36: H4908X75 (ASPH-GRVD) S-28, D-49, 2D-87 MIRL

RWY 18: REIL. PAPI(P2L)—GA 3.0° TCH 40'. Fence.

RWY 36: REIL. PAPI(P2L)—GA 3.0° TCH 40'. Pole.

RUNWAY DECLARED DISTANCE INFORMATION

RWY 13: TORA-9111 TODA-9111 ASDA-9111 LDA-9111

RWY 18: TORA-4908 TODA-4908 ASDA-4908 LDA-4908

RWY 31: TORA-9111 TODA-9111 ASDA-9111 LDA-9111

RWY 36: TORA-4908 TODA-4908 ASDA-4908 LDA-4908

SERVICE: S2 FUEL 100LL, JET A LGT HIRL Rwy 13-31 preset low instst, to incr instst and actvt MALSR Rwy 13—CTAF. MIRL Rwy 18-36 preset med instst only. PAPI Rwys 31, 18 and 36 opr consly.

AIRPORT REMARKS: Attended Mon-Fri 1200-0300Z†. Ad ap bird act. Between 0400-1300Z† all unscheduled air carrier ops with more than 9 passenger seats contact ARFF 361-582-5889. TPA for jets 1715(1600); for turbo prop, light aircraft, rotorcraft 1215(1100).

AIRPORT MANAGER: 361-575-4558

WEATHER DATA SOURCES: ASOS 119.025 (361) 578-9916.

COMMUNICATIONS: CTAF 126.075 ATIS 119.025 UNICOM 122.7

RCO 122.2 (MONTGOMERY COUNTY RADIO)

Ⓡ HOUSTON CENTER APP/DEP CON 135.05

TOWER 126.075 (1300-0400Z†) GND CON 120.525

CLEARANCE DELIVERY PHONE: For CD if una to ctc on FSS freq, ctc Houston ARTCC at 281-230-5622.

AIRSPACE: CLASS D svc 1300-0400Z†; other times CLASS E.

RADIO AIDS TO NAVIGATION: NOTAM FILE VCT.

(L) (L) VORW/DME 109.0 VCT Chan 27 N28°54.02' W96°58.74' 125° 4.2 NM to fld. 125/6E.

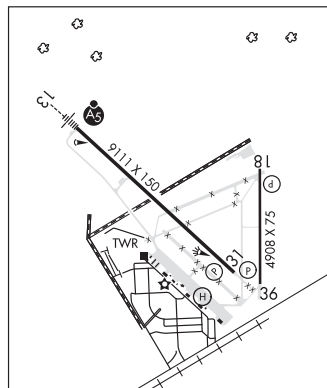
VOR unusable:

345°-355° byd 30.0 NM

ILS/DME 111.5 I-VCT Chan 52 Rwy 13. Class IE. Unmonitored when ATCT clsd.

• • • • •

HELIPAD H1: H60X60 (ASPH)



VULTURES ROW (See SANGER on page 421)