

CONTINUED FROM PRECEDING PAGE

AIRSPACE: CLASS D.

RADIO AIDS TO NAVIGATION: NOTAM FILE AEX.

(H) (H) VORTACW 116.1 AEX Chan 108 N31°15.40' W92°30.06' 327° 4.9 NM to fld. 76/3E.

VOR unusable:

- 035°-065° blo 2,000'
- 066°-094° byd 35 NM blo 3,000'
- 185°-200° byd 35 NM blo 3,000'
- 201°-214° byd 35 NM blo 2,000'
- 215°-260° blo 2,000'
- 261°-285° byd 35 NM blo 2,000'
- 357°-034° byd 35 NM blo 3,000'

ILS 110.1 I-ERJ Rwy 14. Class IT.

COMM/NAV/WEATHER REMARKS: Multicom frequency 130.0 avbl.

ESLER RGNL (ESF)(KESF) P (ARNG) 10 NE UTC-6(-5DT) N31°23.69' W92°17.75'

HOUSTON

112 B NOTAM FILE ESF

H-6I, L-21B, 22E

RWY 09-27: H5998X150 (ASPH-GRVD) S-75, D-150, 2S-175,

IAP

2D-220 HIRL

RWY 09: REIL. PAPI(P4L)—GA 3.0° TCH 51'. Trees.

RWY 27: MALSR.

RWY 14-32: H5600X150 (ASPH-GRVD) S-75, D-150, 2S-175,

2D-220 MIRL 0.4% up NW

RWY 14: REIL. PAPI(P4L)—GA 3.0° TCH 36'. Trees.

RWY 32: REIL. PAPI(P4L)—GA 3.0° TCH 56'. Fence.

SERVICE: FUEL 100LL, JET A LGT ACTVT MALSR Rwy 27; REIL Rwy 09, 14-32; MIRL Rwy 14-32; HIRL Rwy 09-27; twy lgts Twys A, B, C, D and E—CTAF. Rwy 09 REILS OTS. Rwy 14 REIL OTS. Rwy 14 PAPI OTS. MILITARY— FUEL A+ (avbl 1300-2300Z‡ Tue-Fri; OT, C318-443-5566.) (NC-100LL)

AIRPORT REMARKS: Attended Tue-Fri 1300-2330Z‡. Fuel avbl Tue-Fri 1300-2300Z‡; Sat-Mon on call in advance call 318-443-5566. 100LL self serve 24hrs. Birds on and invof arpt seasonally. PAEW adjacent rwys and twys. Rwy 14 and Rwy 32 rwy markings severely faded.

AIRPORT MANAGER: 985-750-0485

WEATHER DATA SOURCES: ASOS 119.425 (318) 484-9031.

COMMUNICATIONS: CTAF/UNICOM 122.8

Ⓡ POLK APP/DEP CON 125.4

CLEARANCE DELIVERY PHONE: For CD cto Polk Apch at 337-531-2352.

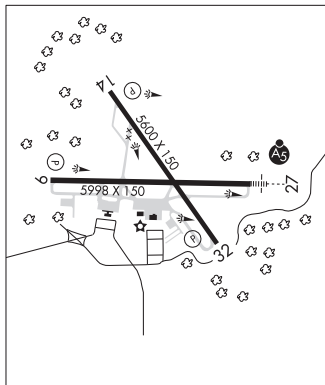
RADIO AIDS TO NAVIGATION: NOTAM FILE AEX.

ALEXANDRIA (H) (H) VORTACW 116.1 AEX Chan 108 N31°15.40' W92°30.06' 049° 13.4 NM to fld. 76/3E.

VOR unusable:

- 035°-065° blo 2,000'
- 066°-094° byd 35 NM blo 3,000'
- 185°-200° byd 35 NM blo 3,000'
- 201°-214° byd 35 NM blo 2,000'
- 215°-260° blo 2,000'
- 261°-285° byd 35 NM blo 2,000'
- 357°-034° byd 35 NM blo 3,000'

ILS/DME 111.5 I-ESF Chan 52 Rwy 27. Class IA. ILS/DME unmonitored. DME unusable byd 25° right of course.



ALLEN PARISH (See OAKDALE on page 120)

ALVIN CALLENDER FLD (See NEW ORLEANS NAS JRB (ALVIN CALLENDER FLD) on page 118)

ANGER N30°36.38' W90°25.27' NOTAM FILE DRI.

NEW ORLEANS

NDB (LOWW) 212 HP 178° 5.1 NM to Hammond Northshore Rgnl. 94/OE.