

CONTINUED FROM PRECEDING PAGE

CLEARANCE DELIVERY PHONE: For CD ctc Monroe Apch at 318-327-5641, if unavbl, ctc Fort Worth ARTCC at 817-858-7584.

RADIO AIDS TO NAVIGATION: NOTAM FILE MLU.

MONROE (VL) (L) VORTACW 117.2 MLU Chan 119 N32°31.01' W92°02.16' 026° 16.3 NM to fld. 77/3E.

VOR unusable:

- 010°-040° byd 40 NM
- 125°-135° byd 40 NM
- 215°-231° byd 40 NM
- 232°-242° byd 40 NM blo 8,000'
- 232°-242° byd 83 NM
- 243°-255° byd 40 NM blo 7,000'
- 243°-255° byd 56 NM
- 256°-267° byd 40 NM blo 18,000'
- 256°-267° byd 45 NM
- 268°-271° byd 40 NM
- 272°-282° byd 40 NM blo 2,000'
- 272°-282° byd 51 NM
- 283°-315° byd 40 NM
- 345°-355° byd 40 NM

DME unusable:

- 097°-131° blo 3,000'
- 097°-131° byd 20 NM

TACAN AZIMUTH unusable:

- 097°-131° blo 3,000'
- 097°-131° byd 20 NM

BASTROP NDB (MHW) 329 BQP N32°45.28' W91°53.01' at fld. 159/3E. NOTAM FILE DRI.

AWOS broadcasted on NDB

BATON ROUGE METRO, RYAN FLD (BTR)(KBTR) 4 N UTC-6(-5DT) N30°31.98' W91°08.99'

HOUSTON

70 B LRA ARFF Index—See Remarks NOTAM FILE BTR MON Airport

H-7D, L-21B, 22F

RWY 04L-22R: H7500X150 (CONC-GRVD) S-120, D-170, 2S-175,

IAP, AD

2D-300 PCN 70 R/A/W/T HIRL CL

RWY 04L: RVR-TR Pole.

RWY 22R: MALSR. TDZL. PAPI(P4L)—GA 3.0° TCH 56'.

RVR-TR Rgt tfc.

RWY 13-31: H7005X150 (ASPH-GRVD) S-120, D-170, 2S-175,

2D-300 PCN 95 F/C/X/T HIRL

RWY 13: MALSR. RVR-T Thld dsplcd 597'. Pole.

RWY 31: MALS. VASI(V4L)—GA 3.0° TCH 64'. RVR-R Thld dsplcd 314'. Road.

RWY 04R-22L: H3799X75 (ASPH) S-30, D-45 PCN 26 F/C/X/T MIRL

RWY 04R: Rgt tfc.

RUNWAY DECLARED DISTANCE INFORMATION

RWY 04L:TORA-7500 TODA-7500 ASDA-7500 LDA-7500

RWY 04R:TORA-3799 TODA-3799 ASDA-3799 LDA-3799

RWY 13: TORA-7004 TODA-7004 ASDA-6317 LDA-5720

RWY 22L:TORA-3799 TODA-3799 ASDA-3799 LDA-3799

RWY 22R:TORA-7500 TODA-7500 ASDA-7500 LDA-7500

RWY 31: TORA-7004 TODA-7004 ASDA-6407 LDA-6094

SERVICE: S4 FUEL 100LL, JET A OX 1, 3 LGT ACTVT MALSR Rwy

22R & 13 and MALS Rwy 31—CTAF. When ATCT clsd HIRL Rwys

13-31 & 04L-22R preset low instst; to incr instst ACTVT—CTAF. MIRL Rwy 04R-22L not avbl.

AIRPORT REMARKS: Attended 1100-0600Z. Migratory birds on and in vicinity of arpt during months of Mar, Apr, Sep and Oct.

Class I ARFF Index C, 24 hrs PPR for unscheduled air carrier ops with more than 30 passenger seats 0600-1100Z, call

arpt manager 225-355-2068/0333. When twr clsd use 121.9 to ctc ARFF for emergency request. Rwy 04R-22L not

avbl for air carrier ops with more than 30 passenger seats. Rwy 04R-22L and Twy E are similar in appearance. Use

caution when exiting Rwy 13-31. Ramp and twy lane adjacent to the commercial air carrier terminal building is limited to

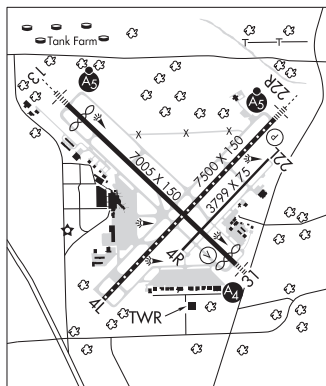
commercial air carrier and passenger airtaxi acct only. Twy E weight restrictions: single 44,000 lbs, dual 55,000 lbs,

dual tandem 93,000 lbs. Twy E, Twy F btn Rwy 04R-22L and AER 31 not avbl for skedd acr ops. Twy F btn Rwy 04-22L

and 31 RDCS to 40 ft wid.

AIRPORT MANAGER: 225-355-0333

WEATHER DATA SOURCES: ASOS (225) 354-2138 LLWAS.



CONTINUED ON NEXT PAGE

CONTINUED FROM PRECEDING PAGE

COMMUNICATIONS: CTAF 118.45 ATIS 125.2 225-354-2170 UNICOM 122.95

RCO 122.2 (DE RIDDER RADIO)

Ⓡ APP/DEP CON 120.3 WEST 133.225 EAST (1100-0600Z‡)

Ⓡ HOUSTON CENTER APP/DEP CON 126.35 (0600-1100Z‡)

TOWER 118.45 (1100-0600Z‡) GND CON 121.9 CLNC DEL 119.4

CLEARANCE DELIVERY PHONE: For CD if una to ctc on FSS freq, ctc Houston ARTCC at 281-230-5622.

AIRSPACE: CLASS C svc ctc APP CON svc (per TWR/NOTAM 1100-0600Z‡); other times CLASS E.

RADIO AIDS TO NAVIGATION: NOTAM FILE BTR.

FIGHTING TIGER (VL) (L) VORTACW 116.5 LSU Chan 112 N30°29.11' W91°17.64' 063° 8.0 NM to fld. 20/6E.

RUNDI NDB (LOMW) 284 BT N30°34.98' W91°12.66' 133° 4.4 NM to fld. 69/0E.

ILS/DME 110.3 I-BTR Chan 40 Rwy 13. Class ID. LOM RUNDI NDB. Unmonitored when ATCT closed.

ILS/DME 108.7 I-CLZ Chan 24 Rwy 22R. Class IIE. Unmonitored when ATCT closed.

ASR (1100-0600Z‡)

BEAUREGARD RGNL (See DE RIDDER on page 97)

BELCHER N32°46.28' W93°48.60' NOTAM FILE SHV.

(H) (H) VORTACW 117.4 EIC Chan 121 159° 14.2 NM to Shreveport Downtown. 190/7E.

MEMPHIS

H-6I, L-17E

BLOCK WR29 WBF N26°55.83' W90°30.42'/130

AWOS-3 118.525 (985) 773-5497 Winds unrel.

L-21B, GOMC

BLUEBIRD HILL (See KEITHVILLE on page 105)

BOGALUSA

GEORGE R CARR MEML AIR FLD (BXA)(KBXA) 2 N UTC-6(-5DT) N30°48.82' W89°51.90'

NEW ORLEANS

119 B NOTAM FILE DRI

H-6I, 8F, L-21B, 22F

RWY 18-36: H5002X100 (ASPH) S-22 MIRL

IAP

RWY 18: REIL. PAPI(P2L)—GA 3.0° TCH 50'. Trees.

RWY 36: REIL. PAPI(P2L)—GA 3.0° TCH 52'. Trees.

SERVICE: S4 FUEL 100LL, JET A LGT Dusk-Dawn. REIL Rwy 18 and 36; MIRL Rwy 18-36 preset low instst dusk-dawn; to incr instst—CTAF.

AIRPORT REMARKS: Attended 1400-2300Z‡. Fuel avbl 24 hrs self svc with credit card. Single point and overwing fueling avbl.

AIRPORT MANAGER: 985-732-6200

WEATHER DATA SOURCES: AWOS-3PT 118.025 (985) 732-6224.

COMMUNICATIONS: CTAF/UNICOM 122.8

Ⓡ HOUSTON CENTER APP/DEP CON 126.8

CLEARANCE DELIVERY PHONE: For CD ctc Houston ARTCC at 281-230-5622.

RADIO AIDS TO NAVIGATION: NOTAM FILE GWO.

PICAYUNE (L) (L) VORW/DME 113.95 PCU Chan 86(Y) N30°33.67'

W89°43.83' 330° 16.6 NM to fld. 70/5E.

VOR unusable:

285°-305° byd 6 NM blo 4,000'

325°-076° byd 26 NM blo 2,500'

DME unusable:

078°-180° byd 32 NM blo 3,000'

331°-064° byd 27 NM blo 4,000'

BOGALUSA NDB (MHW) 353 GVB N30°52.90' W89°51.73' 182° 4.1 NM to fld. 148/0W. NOTAM FILE DRI.

NDB unmonitored indef.

LOC 111.1 I-BXA Rwy 18.

