

PAHOKEE N26°46.96' W80°41.49' NOTAM FILE MIA.
 (H) (H) VOR/DME 115.4 PHK Chan 101 at Palm Beach Co Glades. 16/0E.
 RCO 122.2 (MIAMI RADIO)

MIAMI
 H-8I, L-23C

PALATKA MUNI/LT KAY LARKIN FLD (28J) 2 NW UTC-5(-4DT) N29°39.50' W81°41.37'

JACKSONVILLE
 H-8H, L-21D, 24G
 IAP

48 B NOTAM FILE GNV
RWY 09-27: H6000X100 (ASPH) S-21, D-60 PCN 28 F/A/X/T MIRL
RWY 09: REIL. PAPI(P4L)—GA 3.0° TCH 31'. Trees.
RWY 27: REIL. PAPI(P4L)—GA 3.5° TCH 38'. Thld dsplcd 449'.
 Trees.
RWY 17-35: H3510X75 (ASPH) S-31, D-60 PCN 22 F/B/X/T MIRL
 0.5% up S
RWY 17: PAPI(P2L)—GA 3.0° TCH 40'. Trees.
RWY 35: PAPI(P2L)—GA 3.75° TCH 40'. Trees.

RUNWAY DECLARED DISTANCE INFORMATION

RWY 09: TORA-5549 TODA-5549 ASDA-5999 LDA-5999
RWY 27: TORA-5999 TODA-5999 ASDA-5999 LDA-5549

SERVICE: S6 FUEL 100LL, JET A LGT ACTVT REIL Rwy 09 and Rwy
 27; PAPI Rwy 09-27 & Rwy 17-35; MIRL Rwy 09-27 & Rwy
 17-35—CTAF. Rwy 35 PAPI unusbl byd 7 deg left of cntrn.

AIRPORT REMARKS: Attended 1300-2300Z†. Parachute Jumping. Wildlife
 on and in/ov arpt. Credit card fuel avbl 24 hrs. Rwy 17-35 rstrd to
 acft 12,500 lb GWT or less. Rwy 09 preferred rwy. Rwy 35 unlgtd
 obstns present in the apch to Rwy 35 due to trees 1520 ft bfr AER
 Rwy 35.

AIRPORT MANAGER: 386-329-0148

WEATHER DATA SOURCES: AWOS-3 119.925 (386) 312-2212.

COMMUNICATIONS: CTAF/UNICOM 122.8

RCO 122.3 (GAINESVILLE RADIO)

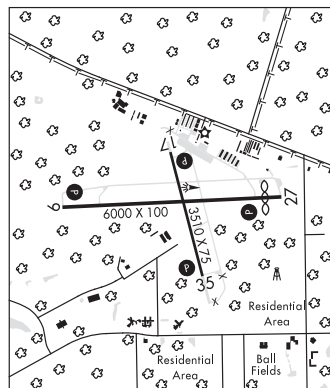
Ⓡ JACKSONVILLE APP/DEP CON 118.175 (10,000' and blo)

RADIO AIDS TO NAVIGATION: NOTAM FILE GNV.

GATORS (L) (L) VORTACW 116.2 GNV Chan 109 N29°41.53' W82°16.38' 098° 30.6 NM to fld. 128/4W.

VORTAC unusable:

Byd 25 NM blo 3,000'



PALM BEACH CO GLADES (See PAHOKEE on page 152)

PALM BEACH CO PARK (See WEST PALM BEACH on page 184)

PALM BEACH INTL (See WEST PALM BEACH on page 185)

PALM COAST

FLAGLER EXEC (FIN)(KFIN) 6 S UTC-5(-4DT) N29°27.91' W81°12.46'

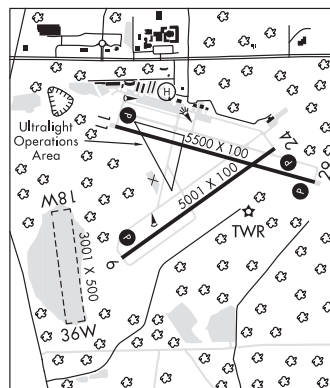
JACKSONVILLE
 H-8H, L-21D, 24G
 IAP, AD

33 B NOTAM FILE FIN
RWY 11-29: H5500X100 (ASPH-GRVD) S-60 PCN 27 F/A/X/T MIRL
RWY 11: REIL. PAPI(P4L)—GA 3.0° TCH 40'. Trees.
RWY 29: REIL. PAPI(P4L)—GA 3.0° TCH 40'. Trees.
RWY 06-24: H5001X100 (ASPH-GRVD) S-60 PCN 19 F/B/Y/T MIRL
RWY 06: REIL. PAPI(P4L)—GA 3.0° TCH 41'. Trees.
RWY 24: REIL. PAPI(P4L)—GA 3.0° TCH 40'. Trees.
SERVICE: S4 FUEL 100LL, JET A LGT When ATCT clsd, actvt REIL 6,
 11, 24 and 29; PAPI Rwy 06, 24, Rwy 11 and 29; MIRL Rwy 06-24
 and 11-29—CTAF.

NOISE: Noise abatement procs in efct, voluntary retrain from TGL ops
 0300-1200Z†. Noise sensitive area, all quads of arpt

AIRPORT REMARKS: Attended Mon-Sat 1200-2300Z†, Sun 1300-2000Z†.

For Jet A fuel after hrs call 386-313-4220 24 hrs in advance. Fuel
 not avbl at lake. Twy B btn Twy A1 and Twy D clsd to fixed wing acft.
 Hel ops conducted wi arpt bndry 500 ft or blw unless drctd by ATC;
 hel ops Rws 06 and 29 left t/c; hel ops Rwy 11 and 24 righ t/c. Rwy
 06 unlgtd obstns in apch; 1060 ft trees bfr AER. Rwy 24 unlgtd obstns
 in apch; 1080 ft trees bfr AER. Rwy 11 dsngd calm wind rwy for arrs
 and deps 0300-1100Z†.



CONTINUED ON NEXT PAGE

CONTINUED FROM PRECEDING PAGE

AIRPORT MANAGER: (386) 313-4220

WEATHER DATA SOURCES: AWOS-3 128.325 (386) 437-7334.

COMMUNICATIONS: CTAF 118.95 ATIS 128.325 UNICOM 123.0

® DAYTONA APP/DEP CON 125.8

TOWER 118.95 (1100-0100Z±) **GND CON** 121.75 **CLNC DEL** 121.75

CLEARANCE DELIVERY PHONE: For CD or to cnl IFR when ATCT is clsd ctc dab Apch at 386-226-3939.

AIRSPACE: CLASS D svc 1100-0100Z±; other times CLASS G.

RADIO AIDS TO NAVIGATION: NOTAM FILE OMN.

ORMOND BEACH (VH) (H) VORTAC 112.6 OMN Chan 73 N29°18.20' W81°06.76' 333° 10.9 NM to fld. 24/0E.

VOR unusable:

034°-036° byd 40 NM
 070°-100° byd 35 NM blo 1,500'
 099°-112° byd 40 NM
 122°-141° byd 40 NM
 159°-161° byd 40 NM
 170°-181° byd 40 NM blo 3,000'
 170°-181° byd 46'
 207°-209° byd 40 NM
 236°-239° byd 40 NM
 240°-244° blo 6,000'
 240°-250° byd 53 NM
 251°-286° byd 40 NM
 290°-298° byd 40
 27
 290°-300° byd 20 NM blo 2,500'
 318°-321° byd 40 NM
 326°-328° byd 40 NM

• • • • •
WATERWAY 18W-36W: 3001X500 (WATER)

SEAPLANE REMARKS: For seaplane refueling at lake call 386-437-0401, 24 hrs in advance. Rwy 18W-36W seaplane lngd area Gore Lake 3196 ft by 1633 ft unmrkd 40 ft trees water edge all quadrants; all apchs hdg 180° or 360° past trees.

• • • • •
HELIPAD H1: H36X36 (CONC-GRVL)

HELIPORT REMARKS: Helipad H1 na exc Flagler County emerg svcs.

PALMETTO

MANATEE (48X) 7 NE UTC-5(-4DT) N27°38.56' W82°31.20'

MIAMI

27 NOTAM FILE PIE

RWY 07-25: 3120X100 (TURF) LIRL

RWY 07: Trees. Rgt tfc.

RWY 25: Brush.

SERVICE: S2 **FUEL** 100LL **LGT** LIRL Rwy 07-25 avbl by phone req 941-722-9296.

AIRPORT REMARKS: Attended Mon-Fri 1400-2200Z±, Sat 1400-1700Z±. Fuel avbl daily SR-SS. Call arpt mgr for after hrs svc and check rwy cond 941-722-9296. Birds, wildlife and deer on and invof arpt. Arpt clsd to turbine hops inclg hover and practice maneuvers at NE field adj to Rwy 07-25 exc Bell Jet Rangers, emerg. Call in advn 941-722-9296. Rwy 07-25 sprinklers active Mon-Thu 0100-1000Z±. Rwy 07-25 first 500 ft east end soft after heavy seasonal rains. Rwy 07-25 thlds mkd by 3 green lgts and 1 bucket on each side of rwy.

AIRPORT MANAGER: 941-722-9296

COMMUNICATIONS: CTAF 122.9

CLEARANCE DELIVERY PHONE: For CD ctc Tampa Apch at 813-878-2528

PANACEA

WAKULLA CO (2JØ) 3 S UTC-5(-4DT) N29°59.37' W84°23.72'

JACKSONVILLE

11 NOTAM FILE GNV

RWY 18-36: 2590X70 (TURF)

RWY 18: Thld dspcd 200'. Road.

RWY 36: Thld dspcd 375'. Trees.

SERVICE: **LGT** Lgts OTS.

AIRPORT REMARKS: Unattended. Ground access by prior req 850-321-0373. Parachute Jumping. 50' trees west side of rwy 100' from cntrin. Trees 100'-125' west of Rwy 18-36. AER 36 has 10'-25' trees and 5' fence. Trees, bldgs, windsock poles, lightning detection system, berms and utility poles 75'-125' east of Rwy 18-36. Rwy 18-36 len and wid and dspcd thlds mkd with W PVC pipes tires. Rwy 18-36 soft turf.

AIRPORT MANAGER: 850-321-0373

COMMUNICATIONS: CTAF 122.9

CLEARANCE DELIVERY PHONE: For CD ctc Tallahassee Apch at 850-942-8311, when Apch clsd ctc Jacksonville ARTCC at 904-845-1592.