

TAMPA EXEC (VDF)(KVDF) 6 E UTC-5(-4DT) N28°00.84' W82°20.72'

21 B NOTAM FILEVDF MON Airport

RWY 05-23: H5000X100 (ASPH) S-34.5, D-63 PCN 12 F/A/X/T

MIRL

RWY 05: REIL. PAPI(P2L)—GA 3.02° TCH 45'. Trees.

RWY 23: MALSR. PAPI(P2L)—GA 3.1° TCH 40'. Thld dspld 800'. Road.

RWY 18-36: H3219X75 (ASPH) S-59, D-84 PCN 21 F/B/X/T MIRL

RWY 18: REIL. PAPI(P4R)—GA 3.8° TCH 41'. Brush.

RWY 36: REIL. PAPI(P2L)—GA 3.4° TCH 43'. Pole.

RUNWAY DECLARED DISTANCE INFORMATION

RWY 05: TORA-4574 TODA-4574 ASDA-4956 LDA-4956

RWY 18: TORA-3219 TODA-3219 ASDA-3219 LDA-3219

RWY 23: TORA-5000 TODA-5000 ASDA-5000 LDA-4200

RWY 36: TORA-3219 TODA-3219 ASDA-3219 LDA-3219

SERVICE: S4 FUEL 100LL, JET A LGT Actvt MALSR Rwy 23; REIL Rwy 05, 18, 36; PAPI Rwy 05, 23 18, 36; MIRL Rwy 05-23 and Rwy 18-36—CTAF.

NOISE: Noise abatement procedures in effect for Rwy 18. No turns until over interstate. No turns blo 400 ft AGL.

AIRPORT REMARKS: Attended Mon-Fri 1200-0300Z†, Sat-Sun

1200-0000Z†. After hrs fuel and svcs avbl. Jet single point fueling and lavatory svcs avbl. Be adzd of seaplane flt activity 3 NM SE of arpt. Ctc FBO on call attendant at 813-695-6097. Ctc general aviation department at 813-870-8770. When departing Rwy 05 be alert for MALSR lgt fixture lctd 55' byd rwy end and 9' abv rwy end elev. Trees 510' NW of Rwy 05-23 full len lctd inside trsn sfc.

AIRPORT MANAGER: (813) 870-8735

WEATHER DATA SOURCES: AWOS-3 121.125 (813) 630-0924.

COMMUNICATIONS: CTAF/UNICOM 122.7

Ⓡ APP/DEP CON 119.9

CLEARANCE DELIVERY PHONE: For CD ctc Tampa Apch on 119.9.

RADIO AIDS TO NAVIGATION: NOTAM FILE LAL.

LAKELAND (VH) (H) VORTAC 116.0 LAL Chan 107 N27°59.17' W82°00.83' 274° 17.7 NM to fld. 134/1E.

TACAN AZIMUTH unusable:

321°-339° blo 6,000'

VOR unusable:

020°-045° byd 40 NM

060°-073° byd 40 NM blo 2,500'

060°-073° byd 56 NM

070°-100° byd 35 NM blo 1,400'

074°-090° byd 40 NM blo 2,600'

074°-090° byd 51 NM

197°-207° byd 40 NM blo 2,000'

197°-207° byd 49 NM

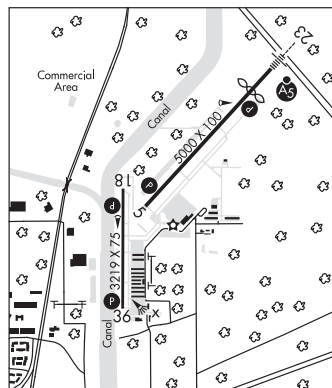
317°-324° byd 40 NM

325°-335° byd 40 NM blo 2,000'

325°-335° byd 57 NM blo 3,000'

325°-335° byd 61 NM

ILS/DME 111.35 I-VDF Chan 50(Y) Rwy 23. Class IT.



JACKSONVILLE
H-8H, L-21D, 24F
IAP, AD