

**HYDE CO** (See ENGELHARD on page 307)

## INDIAN TRAIL

**GOOSE CREEK** (28A) 6 NE UTC-5(-4DT) N35°07.26' W80°35.24'

CHARLOTTE

565 TPA—See Remarks NOTAM FILE RDU

**RWY 04-22:** H2350X35 (ASPH) LIRL(NSTD)

**RWY 04:** Thld dspcd 122'. Trees.

**RWY 22:** Trees.

**SERVICE:** S4 **LGT** Rwy 04-22 NSTD LIRL; no thr lgts. Arpt lgts fm SS on for 2 hrs. After SS; for lgt after hrs call 704-614-3084. Rwy 04-22 first 400 ft SW end unlighted.

**AIRPORT REMARKS:** Attended irregularly. Birds and wildlife on and in/ov arpt. Use caution due to extensive ultralight activity. Farm equipment on and in/ov arpt. Call arpt for fuel when unatndd 704-614-3084. Airframe rprs: 980-875-0114. No night lgds 2 hrs after SS. Nmrs obstn (trees, bldgs, vehicles, parked acft and landscape poles) in pri sfc 65' from rwy cntrln. Rwy 04 thresh dspcd night landings not authorized. Rwy 04-22 has 15 ft dropoff 50 ft fm cntrln on SE side at midfield. Rwy 04-22 has 15 ft roads 55 ft fm cntrln both sides of rwy. Rwy 04: R ttc for ultralights only. Rwy 22: R ttc for ultralights only. TPA—535' AGL ultralights, 1035' AGL all other acft.

**AIRPORT MANAGER:** 704-614-3084

**COMMUNICATIONS:** CTAF/UNICOM 123.0

**CLEARANCE DELIVERY PHONE:** For CD ctc Charlotte Apch at 704-359-0241.

**JAARS-TOWNSEND** (See WAXHAW on page 357)

**JACKSON CO** (See SYLVA on page 353)

## JACKSONVILLE

**ALBERT J ELLIS** (OAJ)(KOAJ) 10 NW UTC-5(-4DT) N34°49.75' W77°36.73'

CHARLOTTE

93 B ARFF Index—See Remarks NOTAM FILE OAJ

H-9C, 12H, L-35B

**RWY 05-23:** H7100X150 (ASPH-GRVD) S-120, D-211, 2S-175,

IAP, AD

2D-388 PCN 51 F/A/W/T HIRL

**RWY 05:** MALSR. PAPI(P4L)—GA 3.0° TCH 55'.

**RWY 23:** REIL. PAPI(P4L)—GA 3.0° TCH 47'.

**SERVICE:** S4 **FUEL** 100LL, JET A **LGT** Actv MALSR Rwy 05; REIL Rwy 23; PAPI Rwy 05 and 23; HIRL Rwy 05-23—CTAF.

**AIRPORT REMARKS:** Attended 1000-0500Z†. For fuel other hrs call 910-347-8366. Class I, ARFF Index B. Clsd to unsked acr opns with more than 30 psgr seats excp PPR call amgr 910-324-1100 or 910-989-3168. Index B ARFF coverage provided during commercial air trc ops. Index C available upon req. Clsd to all mil acft over 17,000 lbs for air carrier ramp ops exc 24 hr PPR. Call arpt mgr 910-324-1100 or 910-989-3168. 180° turns on Rwy 05-23 not authorized for acft 60,000 lbs and over. Field conditions not monitored 0500-1000Z† daily.

**AIRPORT MANAGER:** 910-324-1100

**WEATHER DATA SOURCES:** AWOS-3PT (910) 324-5233 LAWRS.

**COMMUNICATIONS:** CTAF 132.65 UNICOM 122.95 ATIS 124.475 or call 910-324-5233

Ⓡ WILMINGTON APP/DEP CON 135.75 (1100-0400Z†)

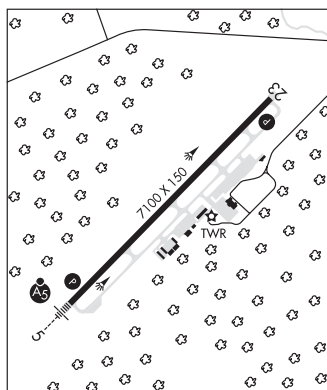
Ⓡ WASHINGTON CENTER APP/DEP CON 124.025 135.75 (0400-1100Z†)

ELLIS TOWER 132.65 (1200-0300Z†)

GND CON 125.4 CLNC DEL 125.4 CLNC DEL 121.4 (When twr clsd)

**CLEARANCE DELIVERY PHONE:** For CD when ATCT clsd, ctc Wilmington Apch at 910-815-4676, or when Apch clsd ctc Washington ARTCC at 703-771-3587.

**AIRSPACE:** CLASS D svc 1200-0300Z†; other times CLASS E.



CONTINUED ON NEXT PAGE

CONTINUED FROM PRECEDING PAGE

RADIO AIDS TO NAVIGATION: NOTAM FILE ILM.

WILMINGTON (H) (H) VORTAC 117.0 ILM Chan 117 N34°21.10' W77°52.46' 031° 31.4 NM to fld. 29/7W.

VOR portion unusable:

- 051°-185°
- 164°-051° blo 17,500'
- 186°-229° blo 3,000'
- 230°-315° byd 5 NM blo 17,500'
- 316°-050° blo 8,000'

TACAN DME unusable:

015°-305° byd 30 NM blo 2,500'

TACAN AZIMUTH unusable:

129°-160° byd 30 NM blo 2,500'

ELLAS NDB (LOMW) 261 OA N34°45.03' W77°42.27' 052° 6.6 NM to fld. 76/8W. NOTAM FILE OAJ.

ILS/DME 108.7 I-OAJ Chan 24 Rwy 05. Class IA. LOM ELLAS NDB. LOM ELLAS NDB unmonitored. LOC unusable byd 15° right of course. Autopilot cpd apch NA blw 900' MSL.

SKY MANOR (N22) 8 W UTC-5(-4DT) N34°42.65' W77°35.10'

CHARLOTTE

60 NOTAM FILE RDU

RWY 08-26: 3610X85 (TURF)

RWY 08: Thld dspcd 595'. Trees.

RWY 26: Trees.

AIRPORT REMARKS: Unattended. Be alert deer invof arpt. Arpt is being reconstructed; men and eqpt on and invof Rwy 08-26.

Rwy 08-26 has no markings due to ongoing reconstruction. Pvt road parls rwy on S side 20' from rwy edge.

AIRPORT MANAGER: 910-389-3014

COMMUNICATIONS: CTAF 122.9

CLEARANCE DELIVERY PHONE: For CD ctc Washington ARTCC at 703-771-3587.

JEFFERSON

ASHE CO (GEV)(KGEV) 3 E UTC-5(-4DT) N36°25.95' W81°25.11'

CINCINNATI

3178 B NOTAM FILE GEV

H-9B, 12H, L-25D

RWY 10-28: H5002X75 (ASPH) S-35.5, D-50.5 MIRL 1.8% up W

IAP

RWY 10: Trees.

RWY 28: REIL. PAPI(P2L)—GA 3.0° TCH 48'.

SERVICE: S4 FUEL 100LL, JET A1+ LGT Actvt REIL Rwy 28; PAPI Rwy 28; MIRL Rwy 10-28—CTAF.

AIRPORT REMARKS: Attended 1330-2130Z. Unatndd Thanksgiving and Christmas. Deer invof arpt. For svc aft hrs call 336-877-1102. 24 hr Jet A avbl with credit card. Ocnl crops and farming equip adj to rwy. Rising trrm all quads. Rwy 28 has an uphill grade. Rwy 10 and 28 safety areas have 100' dropoffs 270' fm thr. Rwy 28 has 100' dropoffs 90' left and rgt of cntrln. Construction activity on ramp and twy. Cold temperature airport. Altitude correction required at or below -16C.

AIRPORT MANAGER: 336-982-5144

WEATHER DATA SOURCES: AWOS-3 120.675 (336) 982-5555.

COMMUNICATIONS: CTAF/UNICOM 122.8

Ⓡ ATLANTA CENTER APP/DEP CON 125.15

CLEARANCE DELIVERY PHONE: For CD ctc Atlanta ARTCC at 770-210-7692.

RADIO AIDS TO NAVIGATION: NOTAM FILE BNA.

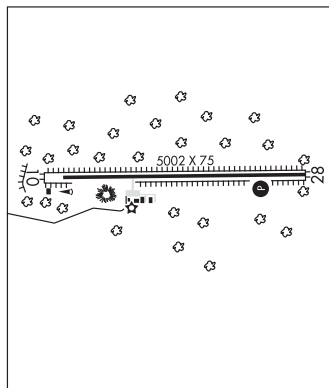
HOLSTON MOUNTAIN (L) (L) VORTACW 114.6 HMV Chan 93

N36°26.22' W82°07.78' 094° 34.4 NM to fld. 4321/4W.

VOR unusable:

- 076°-126° byd 17 NM blo 8,500'
- 171°-178° byd 27 NM blo 10,000'
- 171°-178° within 27 NM blo 8,500'
- 260°-265° byd 36 NM blo 8,500'

LOC/DME 109.35 I-JUH Chan 30(Y) Rwy 28.



JIGEL N34°32.75' W79°08.31' NOTAM FILE LBT.

CHARLOTTE

NDB (MHW/LOM) 384 JB 054° 5.5 NM to Lumberton Rgnl. 135/8W.

L-241, 25A, 36E

JOHNSTON RGNL (See SMITHFIELD on page 351)