

STALS N35°14.63' W77°41.90' NOTAM FILE ISO.
NDB (LOWW) 276 IS 049° 6.8 NM to Kinston Rgnl Jetport at Stallings Fld. 44/9W.

CHARLOTTE

STANLY CO (See ALBEMARLE on page 294)

STAR

MONTGOMERY CO (43A) 0 NE UTC-5(-4DT) N35°23.08' W79°47.42'

CHARLOTTE
L-25E, 36F
IAP

633 B NOTAM FILE RDU

RWY 03-21: H4002X75 (ASPH) S-20 MIRL 1.5% up NE

RWY 03: PAPI(P2L)—GA 3.5° TCH 48'. Trees.

RWY 21: PAPI(P2L)—GA 4.0° TCH 33'. Thld dsplcd 458'. Pole.

SERVICE: FUEL 100LL LGT ACTVT PAPI Rwy 03 & 21; MIRL Rwy 03-21—CTAF.

AIRPORT REMARKS: Unattended. Deer occasionally on rwy. AVGAS 100LL 24 hr self svc with credit card. Unmarked 40 ft p-line 350-750 ft fm thr Rwy 21 across and L of cntrln. 20-25 ft depression 180 ft S of Rwy 03 thr on cntrln. 35-40 ft drop-off 80 ft W of Rwy 03 cntrln; 30 ft drop-off 300 ft fm Rwy 21 thr on cntrln; 30 ft drop-off 80 ft R of Rwy 21 cntrln. Rwy 03 has uphill grade. Rwy 21 has a parallel gravel driveway 130' right of cntrln.

AIRPORT MANAGER: (910) 220-1218

COMMUNICATIONS: CTAF/UNICOM 122.8

Ⓡ FAYETTEVILLE APP/DEP CON 127.8

CLEARANCE DELIVERY PHONE: For CD ctc Fayetteville Apch at 910-484-8012.

RADIO AIDS TO NAVIGATION: NOTAM FILE RDU.

SANDHILLS (L) (L) VORTACW 111.8 SDZ Chan 55 N35°12.93' W79°35.28' 319° 14.2 NM to fld. 588/3W.

VOR unusable:

075°-143°

144°-154° blo 6,000'

144°-154° byd 23 NM

155°-179° blo 5,000'

180°-264° blo 8,000'

301°-019° byd 10 NM blo 10,000'

DME unusable:

041°-092° blo 3,000'

TAC AZM unusable:

016°-050° byd 28 NM blo 3,000'

STATESVILLE RGNL (SVH)(KSVH) 3 SW UTC-5(-4DT) N35°45.90' W80°57.23'

CHARLOTTE
H-9B, 12H, L-25D
IAP

968 B NOTAM FILE SVH

RWY 10-28: H7003X100 (ASPH-GRVD) S-30, D-100 HIRL

RWY 10: REIL. PAPI(P4L)—GA 3.0° TCH 50'. Trees.

RWY 28: MALSR. PAPI(P4L)—GA 3.0° TCH 50'. Thld dsplcd 550'.
Trees.

RUNWAY DECLARED DISTANCE INFORMATION

RWY 10: TORA-7003 TODA-7003 ASDA-6453 LDA-6453

RWY 28: TORA-7003 TODA-7003 ASDA-7003 LDA-6453

SERVICE: S4 FUEL 100LL, JET A, A1+ OX 1, 3 LGT ACTVT MALSR
Rwy 28; REIL Rwy 10; PAPI Rwys 10 and 28; HIRL Rwy
10-28—CTAF.

AIRPORT REMARKS: Attended Mon-Fri 1200-0100Z, Sat-Sun
1300-0100Z. For aft hrs svc call (704) 437-6617 or (704)
880-6897. Rwy 28 has 100' drop-off 250' rgt of cntrln. No line of
sight btn rwys. Twy A at both rwy ends has 80' to 100' drop-off 50'
fm twy cntrln. For after hrs nav/lgt failure call (704) 880-6897.

AIRPORT MANAGER: 704-873-1111

WEATHER DATA SOURCES: AWOS-3 119.225 (704) 873-1978. Wind unavbl.

COMMUNICATIONS: CTAF/UNICOM 123.075

Ⓡ ATLANTA CENTER APP/DEP CON 125.15

CLEARANCE DELIVERY PHONE: For CD ctc Atlanta ARTCC at 770-210-7692.

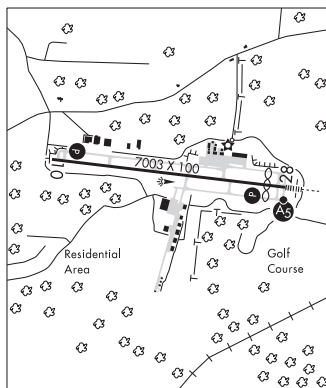
RADIO AIDS TO NAVIGATION: NOTAM FILE RDU.

BARRETT'S MOUNTAIN (H) (H) VOR/DME 113.75 BZM Chan 84(Y) N35°52.13' W81°14.43' 120° 15.3 NM to fld.
1880/6W.

VOR unusable:

030°-040° byd 15NM blo 8,500'

ILS/DME 111.75 I-SVH Chan 54(Y) Rwy 28. Class IA. LOC unusable byd 15° right and 22° left of course.



STONIA N35°11.49' W81°09.47' NOTAM FILE RDU.

CHARLOTTE
L-25D, 36E

NDB (MHW) 260 GHJ at Gastonia Muni. 750/6W. NDB unmonitored 2330-1130Z dur stdt time,
0030-1130Z dur dalgt saving time.