

**AVALON**

**CATALINA** (AVX)(KAVX) 6 NW UTC-8(-7DT) N33°24.30' W118°24.95'

LOS ANGELES

1602 NOTAM FILE AVX

L-3E, 4G

**RWY 04-22:** H3000X75 (CONC) MIRL 1.8% up SW

IAP

**RWY 22:** REIL. PVASI(P SIL)—GA 3.0° TCH 39'. Rgt tfc.

**SERVICE:** LGT ACTVT REIL Rwy 22—CTAF. PSIL Rwy 22 opr drg arpt operg hrs. Rwy 04-22 MIRL OTS indefinitely.

**AIRPORT REMARKS:** Attended 1600-0100Z†. Arpt CLOSED Thanksgiving and Christmas to all tntst tfc. Ops prohibited at night or when arpt is unatndd. No jet acft ops auth. Rwy 04-22 ltd by arpt opr to 12500 lbs mtow. Full stop ldg only; intxn tkofs prohibited. Rwy 04 final 2300 ft steep 2.1% downslope; Rwy 22 upslope preferred ldg. Pilots cannot see acft on opposite ends of rwy due to gradient, must annn taking active rwy on unicorn prior to dep. Rwy 04-22 NSTD rwy safety areas. Ldg fee.

**AIRPORT MANAGER:** 310-510-0143

**WEATHER DATA SOURCES:** ASOS 120.675 (310) 510-9641.

**COMMUNICATIONS:** CTAF/UNICOM 122.7

Ⓡ **SOCAL APP/DEP CON** 127.4

**CLEARANCE DELIVERY PHONE:** For CD etc SoCal Apch at 800-448-3724.

**RADIO AIDS TO NAVIGATION:** NOTAM FILE HHR.

**SANTA CATALINA (VL) (H) VORTACW** 114.15 SXC Chan 88(Y)

N33°22.50' W118°25.19' 352° 1.8 NM to fld. 2090/15E.

VOR unusable:

040°-055° byd 40 NM

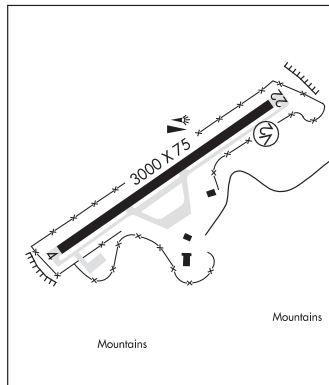
314°-360° byd 25 NM

TACAN AZIMUTH unusable:

314°-360° byd 25 NM

DME unusable:

314°-360° byd 25 NM



**AVALON** L11 N33°20.20' W118°18.67'/13

LOS ANGELES

AWOS-AV 119.275 (310) 510-0185

L-4G

**AVENAL** N35°38.82' W119°58.72' NOTAM FILE RIU.

LOS ANGELES

(VH) (DH) **VORW/DME** 117.1 AVE Chan 118 110° 30.1 NM to Elk Hills-Buttonwillow. 710/16E.

H-4H, L-3C, 7A

VOR unusable:

098°-121° byd 40 NM blo 4,500'

098°-121° byd 49 NM blo 5,000'

098°-121° byd 54 NM blo 18,000'

124°-134° byd 40 NM blo 11,000'

124°-134° byd 68 NM

135°-270° byd 40 NM

145°-280° byd 25 NM blo 10,000'

271°-281° byd 40 NM blo 18,000'

282°-298° byd 40 NM

299°-309° byd 40 NM blo 12,000'

299°-309° byd 70 NM blo 18,000'

310°-336° byd 40 NM blo 4,000'

310°-336° byd 54 NM blo 18,000'

DME unusable:

145°-280° byd 25 NM blo 10,000'

281°-300° byd 25 NM blo 9,000'