

## CONTINUED FROM PRECEDING PAGE

**AIRSPACE:** CLASS D svc 1500–0700Z†; other times CLASS E.

**RADIO AIDS TO NAVIGATION:** NOTAM FILE OAK.

**WOODSIDE (VL) (L) VOR/DME** 113.9 OSI Chan 86 N37°23.55' W122°16.88' 066° 11.2 NM to fld. 2270/17E.

VOR unusable:

030°–050° byd 15 NM  
 055°–067° byd 40 NM blo 14,500'  
 076°–081° byd 40 NM  
 111°–123° byd 40 NM blo 18,000'  
 141°–156° byd 40 NM  
 215°–231° byd 40 NM  
 225°–305° byd 20 NM blo 9,000'  
 232°–243° byd 40 NM blo 18,000'  
 257°–279° byd 40 NM  
 280°–290° byd 40 NM blo 18,000'  
 291°–309° byd 40 NM  
 315°–320° byd 40 NM  
 330°–350° blo 11,000'  
 351°–354° byd 40 NM

DME unusable:

160°–350° blo 11,000'  
 190°–230° byd 20 NM blo 13,000'  
 230°–350° byd 20 NM

**(T) TACAN** Chan 123 NUQ (117.6) N37°25.94' W122°03.46' 140° 1.1 NM to fld. 4/17E. NOTAM FILE NUQ.

TACAN AZIMUTH unusable:

010°–020° byd 20 NM  
 165°–215° byd 15 NM

DME unusable:

165°–215° byd 15 NM

**LOC/DME** 110.35 I–MNQ Chan 40(Y) Rwy 14L. Unmont 0700–1500Z†. DME also serves NUQ ILS Rwy 32R. DME unusable byd 20° right of course.

**ILS/DME** 110.35 I–NUQ Chan 40(Y) Rwy 32R. Class IE. Unmont 0700–1500Z†. MNQ DME used by NUQ ILS Rwy 32R.

**MOUNTAIN VIEW** N37°19.13' W122°08.82'  
 RCO 122.5 (OAKLAND RADIO)

**SAN FRANCISCO**  
 H–3A, L–2F

**MURRAY FLD** (See EUREKA on page 153)

## MURRIETA/TEMECULA

**FRENCH VALLEY (F70)** 2 NE UTC–8(–7DT) N33°34.45' W117°07.71'

1350 B NOTAM FILE RAL

**RWY 18–36:** H600X75 (ASPH) S–30, D–58 MIRL

**RWY 18:** REIL. PAPI(P2L)—GA 3.0° TCH 40'. Road.

**RWY 36:** REIL. PAPI(P2L)—GA 3.0° TCH 40'. Rgt tfc.

**SERVICE:** S4 FUEL 100LL, JET A OX 4 LGT ACTIVATE REIL Rwy 18 and Rwy 36, PAPI Rwy 18 and Rwy 36, MIRL Rwy 18–36, and TWY lights—CTAF.

**NOISE:** All Deps—Noise sensitive areas in vcnty of arpt. Best ROC rcmd to tfc pat alt bfr departing the pat. Calm wind Rwy 18.

**AIRPORT REMARKS:** Attended 1400–0200Z†. Self service 100LL fuel avbl.

For fuel aft hrs call 951–200–1706.

**AIRPORT MANAGER:** 951-955-9418

**WEATHER DATA SOURCES:** AWOS–3 119.025 (951) 696–1018.

**COMMUNICATIONS:** CTAF/UNICOM 122.8

Ⓜ **MARCH APP/DEP CON** 133.5 1500–0700Z†, Sat–Sun 1500–0200Z†, clsd holidays, other times ctc

Ⓜ **SOCAL APP/DEP** 134.0

**CLEARANCE DELIVERY PHONE:** For CD ctc March Apch at 951-655-2355; when March Apch clsd ctc SoCal Apch at 800-448-3724.

**LOS ANGELES**  
 COPTER  
 H–4I, L–4H  
 IAP



CONTINUED ON NEXT PAGE

CONTINUED FROM PRECEDING PAGE

RADIO AIDS TO NAVIGATION: NOTAM FILE CRQ.

OCEANSIDE (VH) (H) VORTAC 115.3 OCN Chan 100 N33°14.44' W117°25.06' 021° 24.7 NM to fld. 52/15E.

VOR unusable:

- 028°-036° byd 40 NM
- 039°-048° byd 40 NM
- 049°-059° byd 40 NM blo 13,000'
- 049°-059° byd 58 NM
- 060°-099° byd 40 NM
- 100°-114° byd 40 NM blo 7,000'
- 100°-114° byd 61 NM
- 216°-226° byd 40 NM
- 227°-265° byd 20 NM
- 305°-320° byd 40 NM
- 330°-335° byd 40 NM
- 337°-017° byd 40 NM

COMM/NAV/WEATHER REMARKS: March (RIV) provides Ground Control Approach (GCA) RADAR.

**NAPA CO** (APC)(KAPC) 5 S UTC-8(-7DT) N38°12.79' W122°16.84'

**SAN FRANCISCO**

36 B NOTAM FILE APC MON Airport

H-3B, L-2F, 3A, A

RWY 01L-19R: H5930X150 (ASPH-GRVD) S-102, D-134, 2D-120

IAP, AD

PCN 41 F/D/X/T MIRL 0.3% up N

RWY 01L: MALS.

RWY 19R: PAPI(P4L)—GA 3.25° TCH 52'. Rgt tfc.

RWY 06-24: H5008X150 (CONC) S-60, D-76, 2D-120

PCN 21 R/C/W/T MIRL 0.4% up NE

RWY 06: REIL.

RWY 01R-19L: H2510X75 (ASPH) S-13.5 PCN 5 F/D/X/T 0.4% up N

RWY 01R: Rgt tfc.

**LAND AND HOLD—SHORT OPERATIONS**

LDG RWY	HOLD—SHORT POINT	AVBL LDG DIST
RWY 24	01L-19R	3700

SERVICE: S4 FUEL 100LL, JET A OX 3, 4 LGT When twr clsd  
 ACTIVATE MALS Rwy 01L; REIL Rwy 06, MIRL Rwy 01L-19R and Rwy 06-24—CTAF. PAPI Rwy 19R opr continuously.

**AIRPORT REMARKS:** Attended 1500-0400Z±. For fuel svc 0500-1400Z± call 707-224-0887. Unlgt bridge 1 NM S, 167' AGL. Asph apron strength 12,500-30,000 lbs gross weight single wheel. Due to arpt proximity to wetlands birds on and invof the arpt year around with highest concentration of activity of birds on the rwys during rainy weather. Landing fee. Ldg fee chrgd to all air taxi, coml acct ops (exc fit instruction), and trans acct weighing more than 12500 lbs.

**AIRPORT MANAGER:** 707-253-4300

**WEATHER DATA SOURCES:** ASOS (707) 252-7916

**COMMUNICATIONS:** CTAF 118.7 ATIS 124.05 707-255-2847 UNICOM 122.95

Ⓡ OAKLAND CENTER APP/DEP CON 127.8 353.5

TOWER 118.7 (1500-0400Z±) GND CON 121.7 CLNC DEL 127.85

**CLEARANCE DELIVERY PHONE:** For CD when ATCT clsd ctc Oakland ARTCC at 510-745-3380.

**AIRSPACE:** CLASS D svc 1500-0400Z±; other times CLASS G.

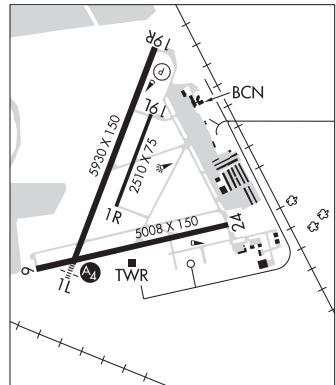
**RADIO AIDS TO NAVIGATION:** NOTAM FILE APC.

SCAGGS ISLAND (VL) (H) VORTACV 112.1 SGD Chan 58 N38°10.76' W122°22.39' 048° 4.8 NM to fld. 5/17E.

VOR unusable:

- 064°-068° byd 40 NM
- 082°-087° byd 40 NM
- 098°-112° byd 40 NM blo 8,000'
- 098°-112° byd 74 NM
- 190°-239° byd 40 NM
- 244°-257° byd 40 NM
- 285°-303° byd 40 NM
- 310°-331° byd 40 NM
- 336°-045° byd 40 NM

ILS/DME 111.3 I-APC Chan 50 Rwy 01L. Class IE. LOC unmonitored when ATCT clsd. Glideslope unusable byd 4° left and 7° right of course. Autopilot coupled apchs not applicable blw 530' MSL (1.3 NM from thld).



**NAVAL BASE VENTURA CO** (See POINT MUGU NAS (NAVAL BASE VENTURA CO) on page 237)