

## PANACA

**LINCOLN CO** (1L1) 2 W UTC-8(-7DT) N37°47.25' W114°25.19'

4831 B TPA—5631(800) NOTAM FILE RNO

**RWY 17-35:** H4606X60 (ASPH) S-12.5 MIRL 0.7% up N

**RWY 17:** Hill.

**SERVICE:** FUEL 100LL LGT ACTVT MIRL Rwy 17-35—CTAF.

**AIRPORT REMARKS:** Unattended. Rwy 17 sfc marks weathered. Rwy 35 sfc marks weathered.

**AIRPORT MANAGER:** (702) 449-2418

**COMMUNICATIONS:** CTAF/UNICOM 122.8

**CLEARANCE DELIVERY PHONE:** For CD ctc Nellis app at 702-652-4172.

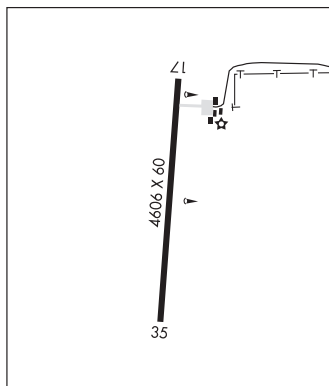
**RADIO AIDS TO NAVIGATION:** NOTAM FILE RNO.

**WILSON CREEK (VH) (H) VORTAC** 116.3 ILC Chan 110 N38°15.01'

W114°23.65' 167° 27.8 NM to fld. 9318/16E.

LAS VEGAS

L-9B



**PERKINS FLD** (See OVERTON on page 403)

## RENO

**RENO/STEAD** (RTS)(KRTS) P (ARNG) 10 NW UTC-8(-7DT) N39°40.09' W119°52.59'

5050 B TPA—See Remarks NOTAM FILE RTS MON Airport

**RWY 14-32:** H9000X150 (ASPH-GRVD) PCN 64 R/B/X/T HIRL

**RWY 14:** REIL. PAPI(P4L)—GA 3.0° TCH 40'.

**RWY 32:** MALSR. PAPI(P4L)—GA 3.0° TCH 39'. Thld dspld 1200'.

Rgt tfc.

**RWY 08-26:** H7608X150 (ASPH-GRVD) PCN 64 R/B/X/T HIRL

0.8% up E

**RWY 08:** REIL. PAPI(P4L)—GA 4.0° TCH 45'.

**RWY 26:** REIL. PAPI(P4L)—GA 3.0° TCH 46'. Rgt tfc.

**RUNWAY DECLARED DISTANCE INFORMATION**

**RWY 08:** TORA-6956 TODA-6956

LDA-6956

**RWY 26:**

LDA-7294

**RWY 32:**

LDA-7800

**SERVICE:** S4 FUEL 100LL, JET A OX1, 3 LGT ACTVT MALSR Rwy 32; REIL Rwy 14; HIRL Rwy 14-32—CTAF. PAPI Rwy 32 on consly. Rwy 14 PAPI OTS indefly. Rwy 08 PAPI unusbl by 5 degs right of cntrl.

**MILITARY—** JASU 1(MD-3M) 2(A-1) FUEL J4 (Mil) A (avbl

1600-0030Z± Mon-Fri, C775-972-5540. OT fee \$50. Emerg svc

C775-530-8743.) (NC-100LL) FLUID HPOX

**AIRPORT REMARKS:** Attended Mon-Fri 1500-0030Z±. Fuel avbl H24 — 775-530-7164 or 122.775. Parachute Jumping. Rng hel ops invof arpt; balloon ops NW quad; tanker and fire ops invof arpt durg fire season. TPA—6246(1200) heavy/high performance acct. Avoid overfl of housing areas east and west of afld. Cold temperature airport. Altitude correction required at or below -16C.

**AIRPORT MANAGER:** 775-328-6573

**WEATHER DATA SOURCES:** AWOS-3 135.175 (775) 677-0589.

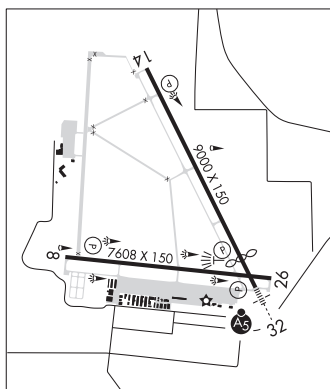
**COMMUNICATIONS:** CTAF/UNICOM 122.7

® NORCAL APP/DEP CON 126.3 (916-361-6874)

SAN FRANCISCO

H-3B, L-9A, 11A

IAP, AD



CONTINUED ON NEXT PAGE

## CONTINUED FROM PRECEDING PAGE

CLEARANCE DELIVERY PHONE: For CD ctc NorCal Apch at 916-361-0596.

RADIO AIDS TO NAVIGATION: NOTAM FILE RNO.

MUSTANG (VH) (H) VORTACW 117.9 FMG Chan 126 N39°31.88' W119°39.36' 293° 13.1 NM to fld. 5950/16E.

VOR unusable:

002°-012° byd 40 NM blo 19,000'

013°-022° byd 40 NM blo 10,300'

013°-022° byd 53 NM

023°-045° byd 40 NM

079°-113° byd 40 NM

114°-124° byd 40 NM blo 10,000'

114°-124° byd 52 NM

125°-145° byd 40 NM

153°-172° byd 40 NM blo 15,000'

153°-172° byd 52 NM blo 18,000'

173°-186° byd 40 NM

187°-197° byd 40 NM blo 15,000'

187°-197° byd 66 NM

198°-212° byd 40 NM

200°-230° byd 30 NM blo 13,000'

213°-223° byd 40 NM blo 18,000'

224°-304° byd 40 NM

327°-339° byd 40 NM blo 18,000'

356°-001° byd 40 NM

TACAN AZIMUTH unusable:

200°-230° byd 30 NM blo 13,000'

DME unusable:

200°-230° byd 30 NM blo 13,000'

ILS/DME 111.9 I-RTS Chan 56 Rwy 32. Class IT.

---