

TOMBSTONE MUNI (P29) P 3 SE UTC-7 N31°40.28' W110°01.29'

PHOENIX
L-5C

4733 NOTAM FILE PRC
RWY 06-24: H4430X60 (ASPH) 1.0% up SW
RWY 06: Brush.
RWY 24: Brush.

SERVICE: S2 FUEL 100LL, JET A

AIRPORT REMARKS: Unattended. Svc avblty—Amgr. Gate code 3214. 15 ft trees and bushes within primary surface. Rwy 06-24 2-6 ft brush both sides.

AIRPORT MANAGER: 520-720-7125

COMMUNICATIONS: CTAF 122.9

CLEARANCE DELIVERY PHONE: For CD ctc Albuquerque ARTCC at 505-856-4861.

TUBA CITY (T03) 5 W UTC-7 N36°05.56' W111°22.99'

LAS VEGAS
H-4J, L-8C

4513 B NOTAM FILE PRC
RWY 15-33: H6230X75 (ASPH) S-12.5 MIRL
RWY 15: PAPI(P2L)—GA 3.0° TCH 40'.
RWY 33: PAPI(P2L)—GA 3.0° TCH 40'.

SERVICE: LGT ACTVT PAPI Rwy 15 and 33; MIRL Rwy 15-33—CTAF.

AIRPORT REMARKS: Unattended. Livestock on arpt. Arpt aces—928-283-2501; gate code: 4513. Rwy 15-33 N 1500 ft sfc undulations up to 8 in.

AIRPORT MANAGER: (505) 728-2804

COMMUNICATIONS: CTAF 122.9

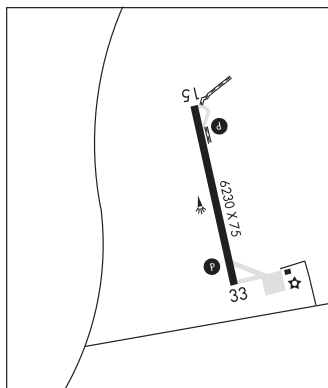
RCO 122.05R 113.5T (PRESCOTT RADIO)

RADIO AIDS TO NAVIGATION: NOTAM FILE PRC.

(VH) (H) VORTAC 113.5 TBC Chan 82 N36°07.28' W111°16.18' 238° 5.8 NM to fld. 5045/15E.

VOR unusable:

- 089°-160° byd 40 NM
- 183°-202° byd 40 NM
- 207°-231° byd 40 NM
- 235°-245° byd 40 NM
- 275°-053° byd 40 NM



TUCSON

RYAN FLD (RYN)(KRYN) 10 SW UTC-7 N32°08.53' W111°10.47'

PHOENIX
H-4J, L-5C
IAP, AD

2419 B TPA—3219(800) NOTAM FILE PRC

RWY 06R-24L: H5500X75 (ASPH) S-12.5, D-30 MIRL

RWY 06R: REIL. PAPI(P4L)—GA 3.0° TCH 53'. Rgt tfc.

RWY 24L: VASI(V4L)—GA 3.0° TCH 26'.

RWY 06L-24R: H4900X75 (ASPH) S-12.5, D-30 MIRL

RWY 06L: REIL. PAPI(P4L)—GA 3.0° TCH 42'.

RWY 24R: PAPI(P4L)—GA 3.0° TCH 42'. Rgt tfc.

RWY 15-33: H4010X75 (ASPH) MIRL 0.8% up S

RWY 15: Rgt tfc.

SERVICE: S4 FUEL 100LL, JET A LGT When ATCT clsd ACTVT PAPI Rwy 06R, 06L, and 24R; VASI Rwy 24L; MIRL Rwy 06R-24L and 15-33—CTAF. Rwy 24R PAPI unusbl byd 4.9 NM.

AIRPORT REMARKS: Attended Mon-Fri 1500-0000Z, Sat 1500-0000Z.

Fuel A 1500-0000Z; aft hr svc fee-520-744-7474; 100LL self serve H24 with credit card. Rwy 06L-24R CLSD when ATCT clsd. Rwy 06R and 06L preferred to 10 kt tailwind; aftn wind may favor Rwy 24L and 24R. Use lndg lgts in pat. Rwy 06R fqt ILS practice apchs. Note: See Special Notices—Glider Operations Northwest of Tucson, Arizona.

AIRPORT MANAGER: 520-573-8100

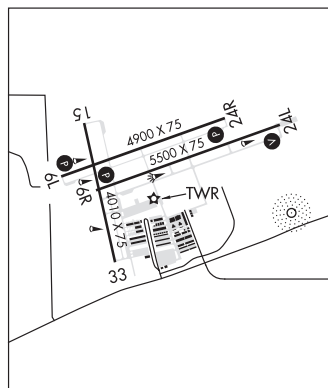
WEATHER DATA SOURCES: AWOS-3 133.35 (520) 578-0269.

COMMUNICATIONS: CTAF 125.8 ATIS 133.35 (520-578-0269)

Ⓡ TUCSON APP/DEP CON 128.5

TOWER 125.8 120.35 (1300-0300Z) GND CON 118.2

CLEARANCE DELIVERY PHONE: For CD when ATCT is clsd ctc Tucson Apch at 520-829-6121.



CONTINUED ON NEXT PAGE

CONTINUED FROM PRECEDING PAGE

AIRSPACE: CLASS D svc 1300-0300Z; other times CLASS E.

RADIO AIDS TO NAVIGATION: NOTAM FILE TUS.

TUCSON (VH) (H) VORTACW 116.0 TUS Chan 107 N32°05.71' W110°54.89' 270° 13.5 NM to fld. 2671/12E.

VOR unusable:

050°-080° byd 30 NM blo 11,500'
 066°-076° byd 40 NM blo 11,500'
 066°-076° byd 48 NM
 077°-131° byd 40 NM
 141°-164° byd 40 NM
 191°-231° byd 40 NM
 245°-249° byd 40 NM
 290°-300° byd 40 NM blo 8,000'
 290°-300° byd 52 NM
 330°-341° byd 40 NM blo 9,000'
 330°-341° byd 52 NM
 342°-065° byd 40 NM
 350°-020° byd 30 NM blo 13,000'

TACAN AZIMUTH unusable:

050°-080° byd 30 NM blo 11,500'
 155°-165° byd 35 NM blo 13,000'
 350°-020° byd 30 NM blo 13,000'

DME unusable:

050°-080° byd 30 NM blo 11,500'
 155°-165° byd 35 NM blo 13,000'
 350°-020° byd 30 NM blo 13,000'

NDB (HW) 338 RYN N32°08.33' W111°09.69' at fld. 2420/12E. NOTAM FILE PRC. NDB unmonitored.

NDB unusable:

025°-050° byd 25 NM blo 14,500'

ILS/DME 111.1 I-IVL Chan 48 Rwy 06R. Class IT.

COMM/NAV/WEATHER REMARKS: (All rys, except Ry 06L-24R when stated on the ATIS) twr frequency will be 120.35.