

HI-ILS or LOC X RWY 34

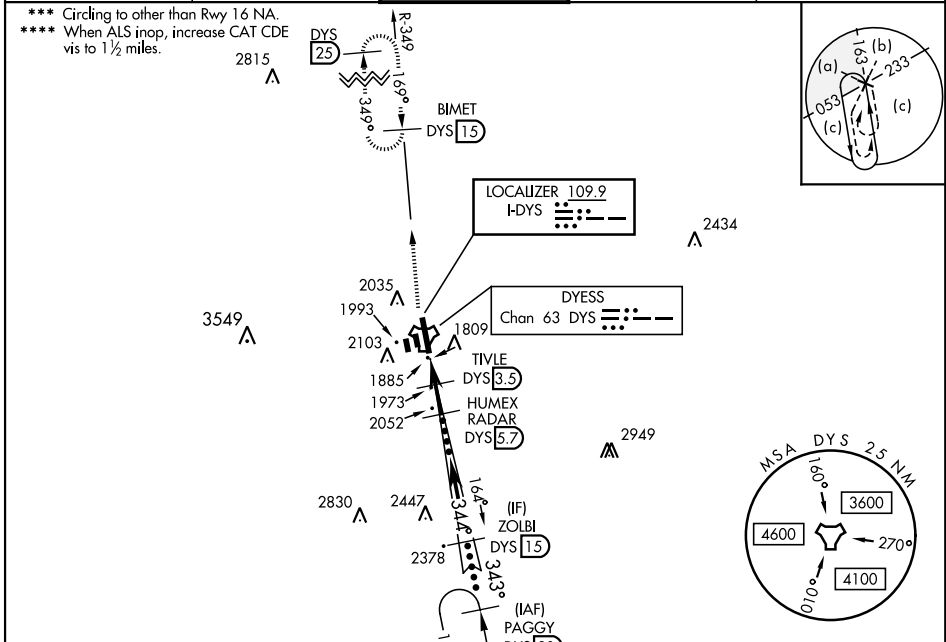
LOC I-DYS 109.9	APCH CRS 344°	Rwy Idg 13,500 TDZE 1788 Arprt Elev 1790
---------------------------	-------------------------	--

AL-2 [USAF]

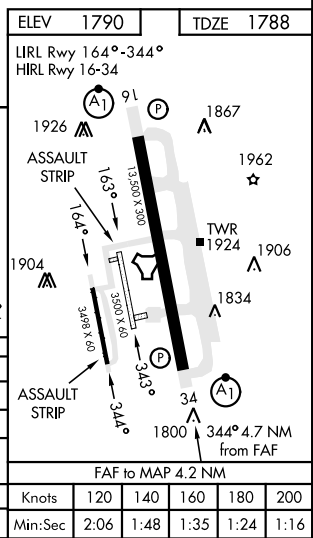
DYESS AFB (KDYS)

RADAR or DME required.	ALSIF-1 	MISSED APPROACH: Climb to 4000 via DYS TACAN R-349 to BIMET and hold.
------------------------	-------------	---

ATIS ★ 269.175	ABILENE APP CON 125.0 338.3 EAST 127.2 282.3 WEST	TOWER 133.0 257.675	GND CON 118.35 275.8	ASR
--------------------------	---	-------------------------------	--------------------------------	-----



4000 DYS R-349	BIMET DYS 15	HUMEX RADAR 5.7	ZOLBI 15	PAGGY 20
TIVLE 3.5				
TACAN				
HEPER 1.5				
5 NM				
4.2 NM				
CATEGORY	C	D	E	
S-ILS 34 *	1988/24	200 (200-½)		
S-LOC 34 **	2240/45	452 (500-¾)		
CIRCLING ***	2460-1¼ 670 (700-1¾)	2460-2 670 (700-2)	2460-2¼ 670 (700-2¼)	
WITHOUT LAST STEPDOWN FIX				
S-LOC 34 ****	2320/55	532 (600-1)		



HI-ILS or LOC X RWY 34

SC-2, 31 OCT 2024 to 28 NOV 2024

SC-2, 31 OCT 2024 to 28 NOV 2024