

ABILENE, TEXAS

# ILS or LOC W RWY 16

<b>LOC I-TYY</b> <b>109.9</b>	<b>APCH CRS</b> <b>164°</b>	<b>Rwy ldg</b> <b>13,500</b> <b>TDZE</b> <b>1790</b> <b>Arprt Elev</b> <b>1790</b>
----------------------------------	--------------------------------	--

AL-2 [USAF]

DYESS AFB (KDYS)

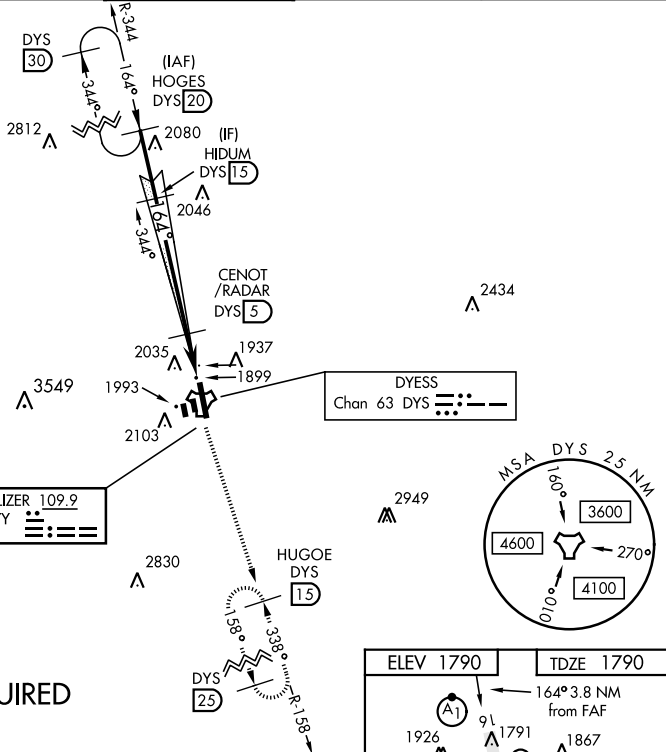
\* When ALS inop, increase all CAT RVR to 40 and vis to 3/4 mile.  
 \*\* When ALS inop, increase CAT AB RVR to 55 and vis to 1 mile, CAT CDE vis to 1 1/4 miles.

ALSF-1

MISSED APPROACH: Climb to 4000 via DYS TACAN R-158 to HUGOE and hold.

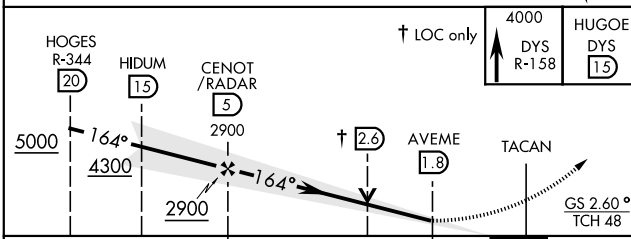
<b>ATIS *</b> <b>269.175</b>	<b>ABILENE APP CON</b> <b>125.0 338.3 EAST</b> <b>127.2 282.3 WEST</b>	<b>DYESS TOWER</b> <b>133.0 257.675</b>	<b>GND CON</b> <b>118.35 275.8</b>	<b>ASR</b>
---------------------------------	--	--	---------------------------------------	------------

\*\*\* Circling to other than Rwy 34 NA.

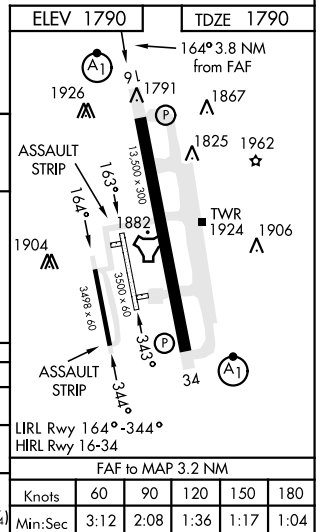


## RADAR or DME REQUIRED

EMERG SAFE ALT 100 NM 4600



CATEGORY	A	B	C	D	E
S-ILS 16 *	1990/24		200	(200-1/2)	
S-LOC 16 **	2220/24	430 (500-1/2)	2220/40		430 (500-3/4)
<b>CIRCLING</b> ***	2300-1 510 (600-1)	2320-1 530 (600-1)	2460-1 3/4 670 (700-1 3/4)	2460-2 670 (700-2)	2460-2 1/4 670 (700-2 1/4)



ABILENE, TEXAS

32°25'N-99°51'W

DYESS AFB (KDYS)

Amdt 3 10NOV16

# ILS or LOC W RWY 16

SC-2, 31 OCT 2024 to 28 NOV 2024