

# VOR/DME RWY 16

VOR/DME TQA <b>111.6</b> Chan <b>53</b>	APCH CRS <b>160°</b>	Rwy ldg <b>13,500</b> TDZE <b>1790</b> Arprt Elev <b>1790</b>
---	-------------------------	---

AL-2 [USAF]

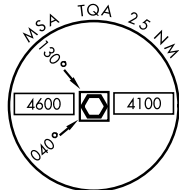
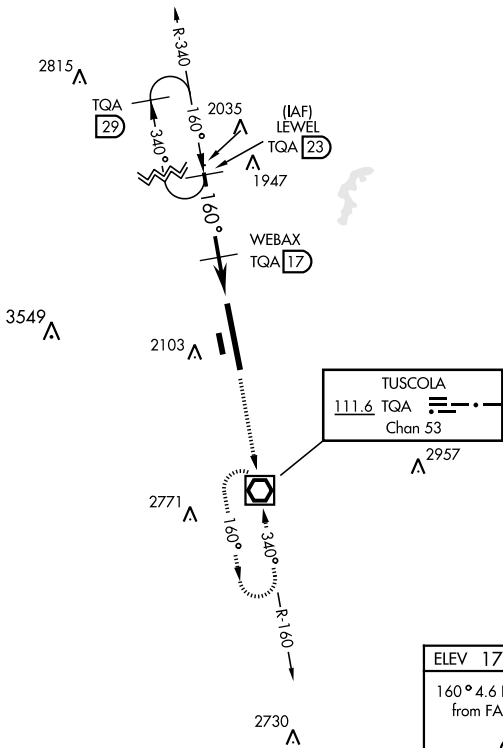
DYESS AFB (KDYS)

\* When ALS inop, increase CAT AB RVR to 55 and vis to 1 mile, CAT CDE vis to 1 3/8 miles.  
\*\* Circling to other than Rwy 34 NA.

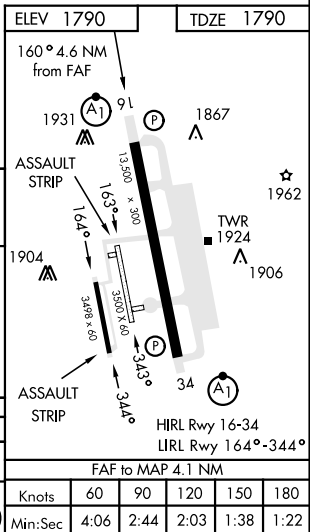
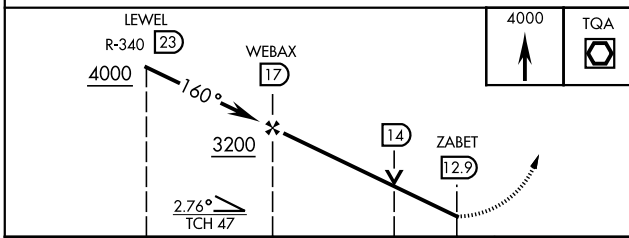


MISSED APPROACH: Climb and maintain 4000 proceed direct TQA and hold.

ATIS ★ <b>269.175</b>	ABILENE APP CON <b>125.0 338.3</b> EAST <b>127.2 282.3</b> WEST	DYESS TOWER <b>133.0 257.675</b>	GND CON <b>118.35 275.8</b>	ASR
--------------------------	---	-------------------------------------	--------------------------------	-----



EMERG SAFE ALT 100 NM 4600



CATEGORY	A	B	C	D	E
S-16 *	2300/24 510 (600-1/2)		2300/55 510 (600-1)		
CIRCLING **	2300-1 510 (600-1)	2320-1 530 (600-1)	2460-1 3/4 670 (700-1 3/4)	2460-2 670 (700-2)	2460-2 1/4 670 (700-2 1/4)

# VOR/DME RWY 16

SC-2, 31 OCT 2024 to 28 NOV 2024

SC-2, 31 OCT 2024 to 28 NOV 2024