

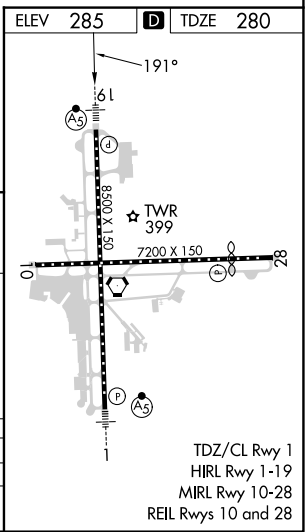
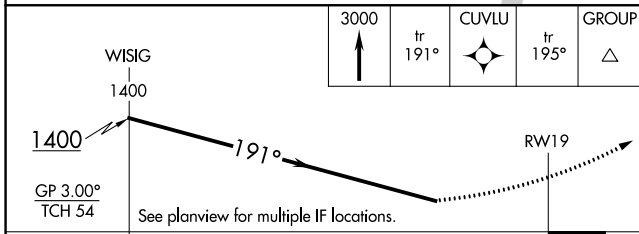
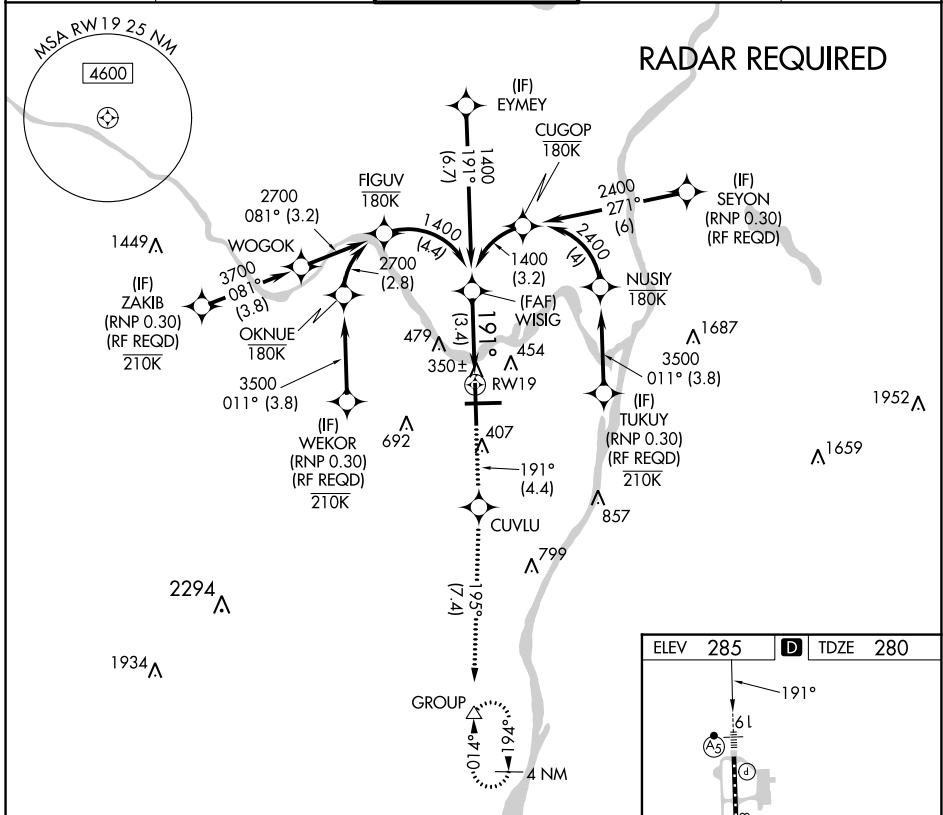
| | | |
|-------------|----------|-------------|
| APP CRS | Rwy Idg | 8500 |
| 191° | TDZE | 280 |
| | Apt Elev | 285 |

RNAV (RNP) Z RWY 19

ALBANY INTL (ALB)

| | | |
|--|-------|--|
| RNP AR APCH. | MALSR | MISSED APPROACH: Climb to 3000 on track 191° to CUVLU and on track 195° to GROUP and hold. |
| ▼ For uncompensated Baro-VNAV systems, procedure NA below -15°C or above 47°C. For inop ALS increase RNP 0.30 visibility to 1 1/2. | | |

| | | | | |
|---------------|----------------------|--------------------|--------------------|---------------|
| D-ATIS | ALBANY APP CON | ALBANY TOWER | GND CON | CLNC DEL |
| 120.45 | 132.825 307.2 | 119.5 257.8 | 121.7 348.6 | 127.50 |



| | | | | |
|-------------|---|--------|-------------|---|
| CATEGORY | A | B | C | D |
| RNP 0.30 DA | | 763/50 | 483 (500-1) | |

AUTHORIZATION REQUIRED

NE-2, 31 OCT 2024 to 28 NOV 2024

NE-2, 31 OCT 2024 to 28 NOV 2024