

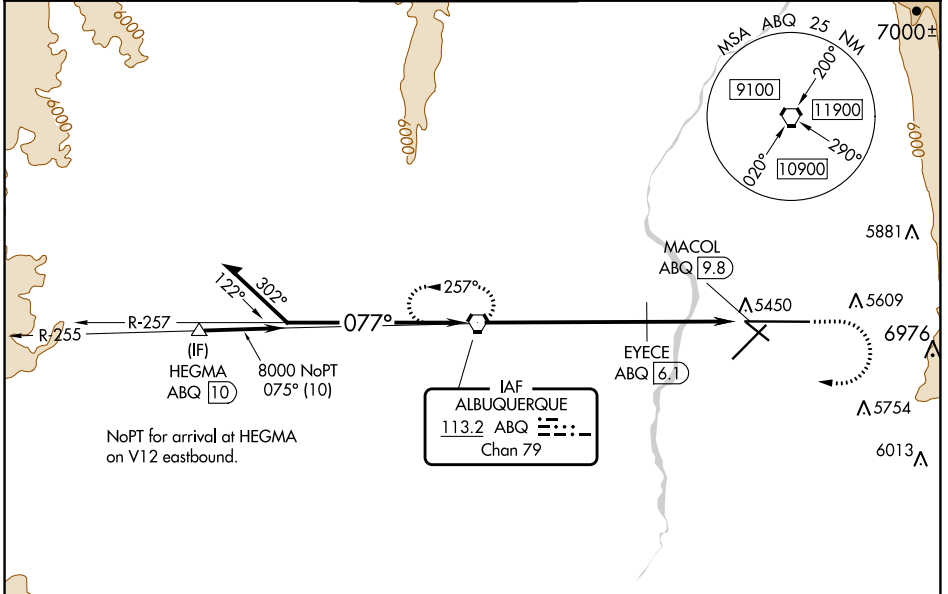
VORTAC ABQ <b>113.2</b> Chan <b>79</b>	APP CRS <b>077°</b>	Rwy Idg <b>12793</b> TDZE <b>5320</b> Apt Elev <b>5355</b>
--	------------------------	--

# VOR RWY 8

ALBUQUERQUE INTL SUNPORT (ABQ)

<b>▲</b> EYECE FIX MINIMUMS: For inop ALS, increase S-8 Cat C/D/E visibility to RVR 5500. <b>ASR</b> For inop ALS, increase S-8 Cat E visibility to 3 SM. Circling Cat E NA southeast of Rwy 3-21 and northeast of Rwy 12-30.	MALSR 	MISSED APPROACH: Climb to 5800 then climbing right turn to 8000 direct ABQ VORTAC and hold.

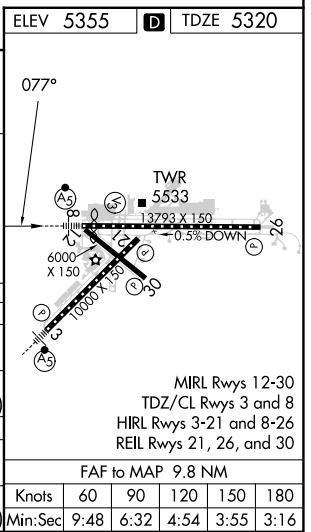
D-ATIS <b>118.0 257.7</b>	ALBUQUERQUE APP CON <b>123.9 354.1</b>	ALBUQUERQUE TOWER <b>120.3 351.9</b>	GND CON <b>121.9 348.6</b>	CLNC DEL <b>119.2 259.3</b>	CPDLC
------------------------------	---	---	-------------------------------	--------------------------------	-------



SW-1, 31 OCT 2024 to 28 NOV 2024

SW-1, 31 OCT 2024 to 28 NOV 2024

ELEV 5355		TDZE 5320			
Remain within 15 NM 8200 257° 077° 8000 6380		5800 8000 ABQ VORTAC EYECE ABQ (6.1) ABQ (8.7) MACOL ABQ (9.8)			
6.1 NM 2.6 NM 1.1 NM					
CATEGORY	A	B	C	D	E
S-8	6380/40 1060 (1100-¾)	6380/55 1060 (1100-1)	6380-2½ 1060 (1100-2½)		
CIRCLING	6380-1¼ 1025 (1100-1¼)	6380-1½ 1025 (1100-1½)	6380-3 1105 (1200-3)	6460-3 1105 (1200-3)	7460-3 2105 (2200-3)
EYECE FIX MINIMUMS					
S-8	5700/24	380 (400-½)	5700/40 380 (400-¾)		
CIRCLING	5840-1 485 (500-1)	5920-1 565 (600-1)	5940-1½ 585 (600-1½)	6460-3 1105 (1200-3)	7460-3 2105 (2200-3)



MIRL Rwy 12-30	TDZ/CL Rwy 3 and 8	HIRL Rwy 3-21 and 8-26	REIL Rwy 21, 26, and 30
FAF to MAP 9.8 NM			
Knots	60	90	120 150 180
Min:Sec	9:48	6:32	4:54 3:55 3:16