

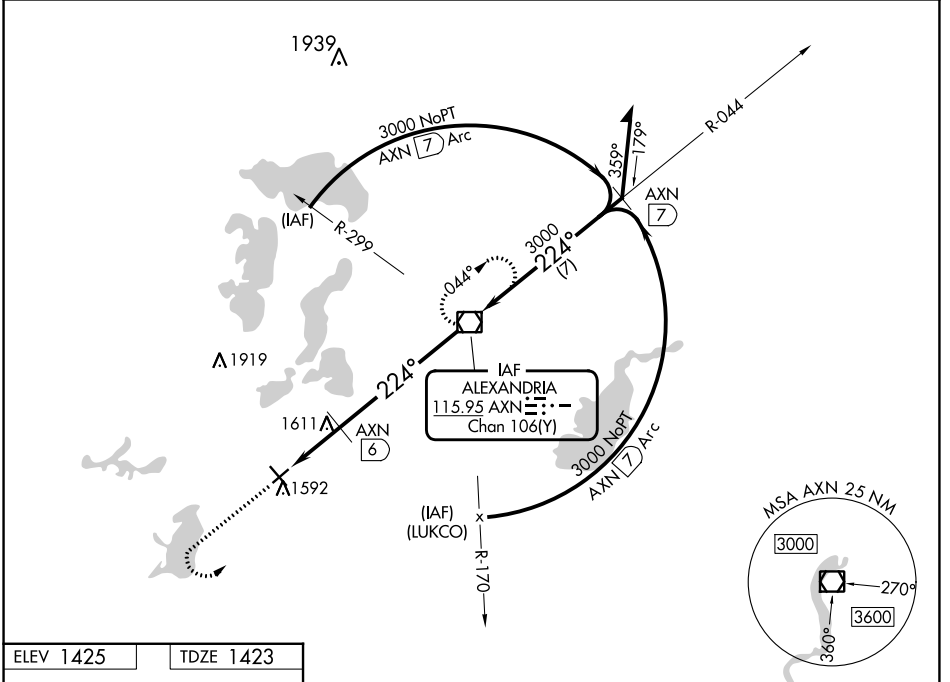
VOR/DME AXN <b>115.95</b> Chan <b>106(Y)</b>	APP CRS <b>224°</b>	Rwy Idg TDZE <b>1423</b> Apt Elev <b>1425</b>	<b>4098</b>
--	------------------------	---	-------------

**VOR RWY 22**  
ALEXANDRIA RGNL/CHANDLER FLD (AXN)

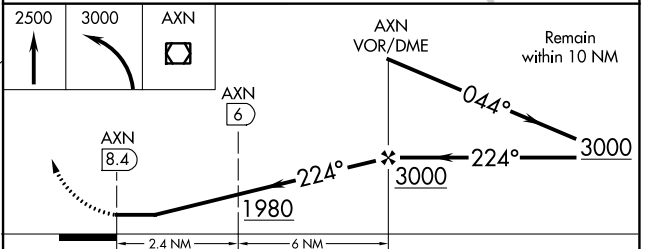
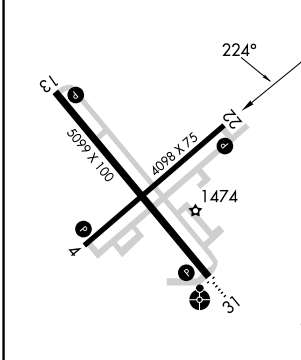
**▼** Rwy 22 helicopter visibility reduction below  $\frac{3}{4}$  SM NA.

MISSED APPROACH: Climb to 2500 then climbing left turn to 3000 direct to AXN VOR/DME and hold.

ASOS <b>118.375</b>	MINNEAPOLIS CENTER <b>126.1 269.2</b>	UNICOM <b>123.0 (CTAF) 0</b>
------------------------	--	---------------------------------



ELEV 1425	TDZE 1423
-----------	-----------



CATEGORY	A	B	C	D
S-22	1980-1 557 (600-1)		1980-1 1/2 557 (600-1 1/2)	1980-1 3/4 557 (600-1 3/4)
CIRCLING	1980-1 555 (600-1)		1980-1 1/2 555 (600-1 1/2)	2000-2 575 (600-2)
DME MINIMUMS				
S-22	1880-1 457 (500-1)		1880-1 1/4 457 (500-1 1/4)	1880-1 1/2 457 (500-1 1/2)
CIRCLING	1920-1 495 (500-1)		1940-1 1/2 515 (600-1 1/2)	2000-2 575 (600-2)

REIL Rwy 4, 13, and 22 **0**  
MIRL Rwy 4-22 and 13-31 **0**

FAF to MAP 8.4 NM

Knots	60	90	120	150	180
Min:Sec	8:24	5:36	4:12	3:22	2:48

NC-1, 31 OCT 2024 to 28 NOV 2024

NC-1, 31 OCT 2024 to 28 NOV 2024