

VORTAC ALS 113.9 Chan 86	APP CRS 142°	Rwy Idg TDZE Apt Elev 7540	N/A N/A 7540
--	------------------------	--	---

VOR-B

SAN LUIS VALLEY RGNL/BERGMAN FLD (ALS)

DME required. RADAR required for arrivals at TUYPI.

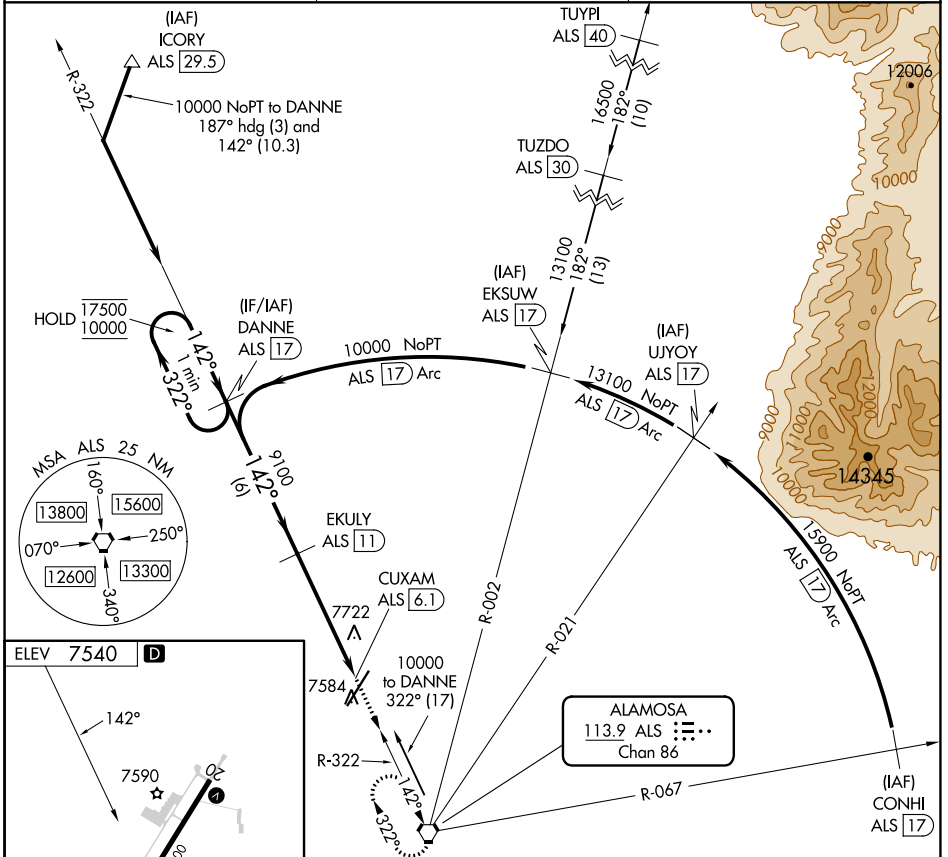
MISSED APPROACH: Climb to 11000 direct ALS VORTAC and hold, continue climb-in-hold to 11000.

▽
* -26°C

ASOS
135.175

DENVER CENTER
128.375 379.95

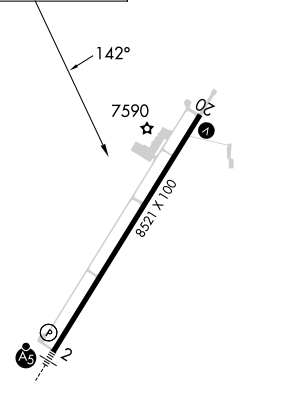
UNICOM
122.8 (CTAF) 0



SW-1, 31 OCT 2024 to 28 NOV 2024

SW-1, 31 OCT 2024 to 28 NOV 2024

ELEV **7540** **D**



REIL Rwy 20 **0**
HIRL Rwy 2-20 **0**

One Minute Holding Pattern	DANNE ALS 17		EKULY ALS 11		CUXAM ALS 6.1		11000 ALS
	17500	10000	9100	6 NM	4.9 NM		
	322°	142°	142°				
CATEGORY	A	B	C	D			
C CIRCLING	8040-1	500 (500-1)	8080-1½ 540 (600-1½)	8100-2 560 (600-2)			