

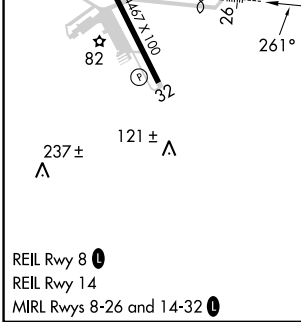
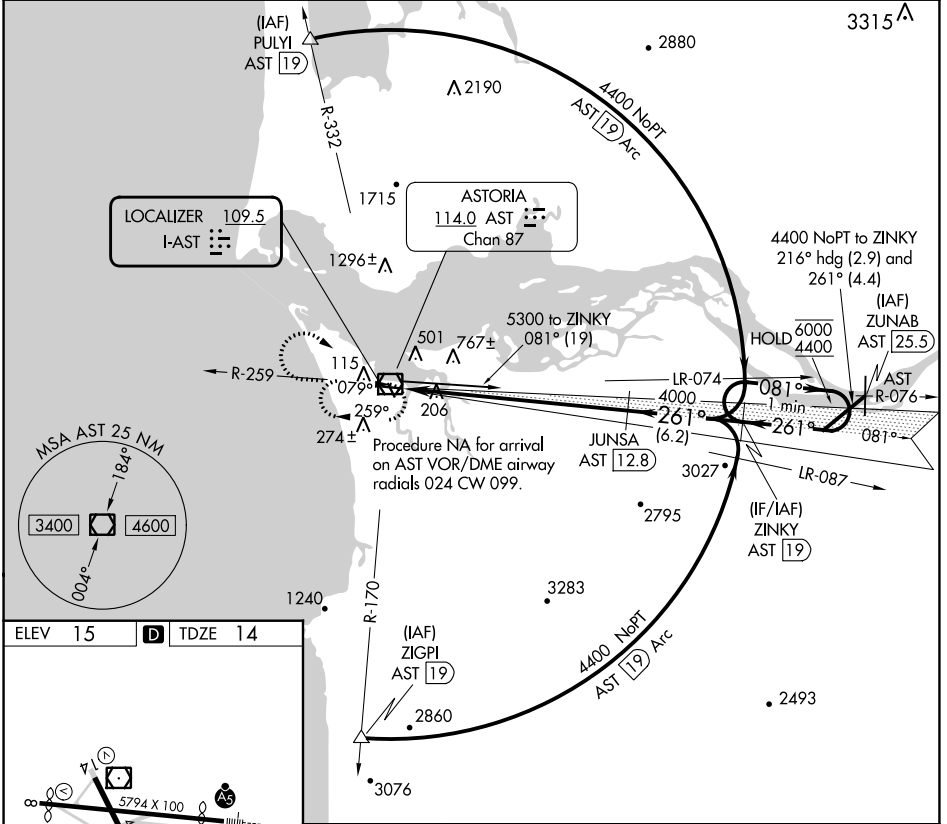
LOC I-AST 109.5	APP CRS 261°	Rwy Idg TDZE Apt Elev	4780 14 15
---------------------------	------------------------	-----------------------------	---------------------------------------

ILS RWY 26

ASTORIA RGNL (AST)

DME required for procedure entry.		MALSRL 	MISSED APPROACH: Climb to 1500 then climbing right turn to 2900 direct AST VOR/DME and hold.
Rwy 26 helicopter visibility reduction below 3/4 SM NA. Inoperative table does not apply.			

ASOS 135.375	SEATTLE CENTER 124.2 317.6	UNICOM 122.8 (CTAF) 0
------------------------	--------------------------------------	---------------------------------



ELEV 15	D	TDZE 14		
1500	2900	AST		
		One Minute Holding Pattern		
JUNSA AST 12.8	ZINKY AST 19			
4000	6000	4400		
261°	081°	261°		
4000	GS 3.00° TCH 56			
12.3 NM		6.2 NM		
CATEGORY	A	B	C	D
S-ILS 26	264-1 250 (300-1)			

NW-1, 31 OCT 2024 to 28 NOV 2024

NW-1, 31 OCT 2024 to 28 NOV 2024